



Single Family
Hunter
Trindle Place

COMMUNITY SALES MANAGER

Christine Glover
Call/Text 717-344-8748



Priced From
\$558,700

4 Elevations Available

3 Bedrooms

2.5 Bathrooms

2,351+ Sq. Ft.

2 Car Garage

One of our most popular models and for good reason! This house has curb appeal and it doesn't stop with the exterior. Interior is well-appointed with a first-floor owner's suite, vaulted great room that flows into an eat-in kitchen with generous pantry, cabinets, and counter space. Formal dining room and study flank a traditional foyer with view of the 2-story great room.

Available Elevations



Upgraded Traditional A



Upgraded Transitional B



Upgraded Trademark C



Upgraded Contemporary Elevation





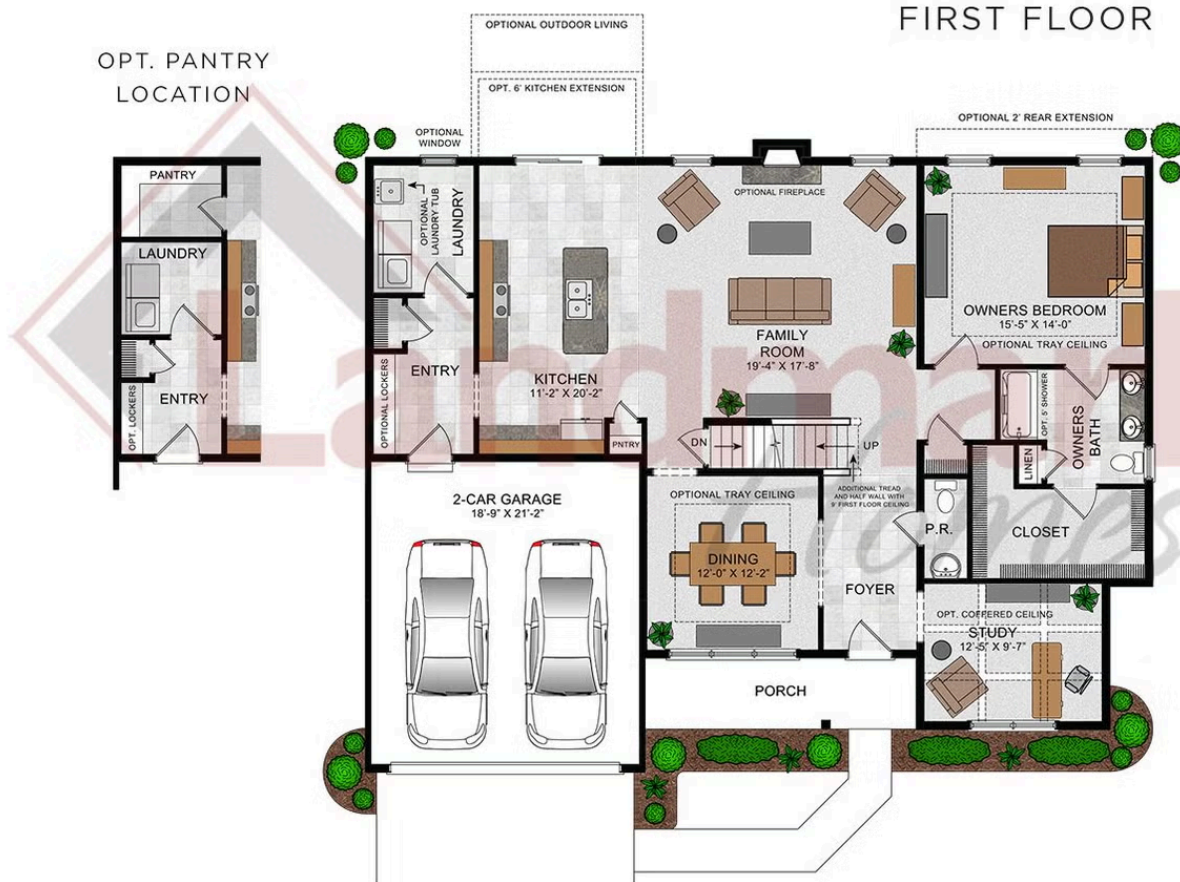
Single Family
Hunter
Trindle Place

COMMUNITY SALES MANAGER

Christine Glover

Call/Text 717-344-8748

Hunter

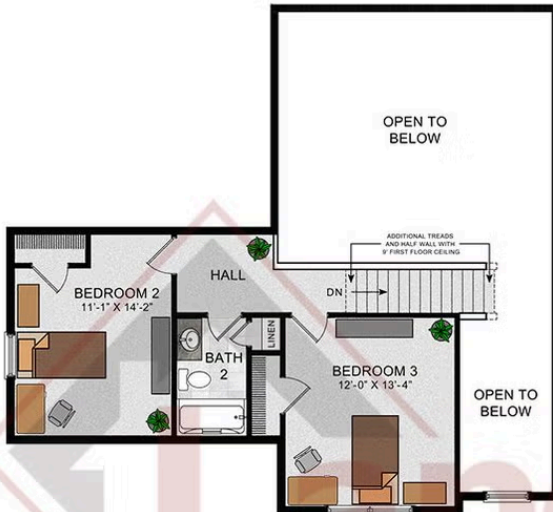


© 2022 Landmark Builders, Inc. We enforce our intellectual property rights to the fullest extent permitted by applicable law. Elevations and landscaping are artists' conceptions only. Floor plans may vary depending on elevation selected. Actual construction documents take precedence over artwork.

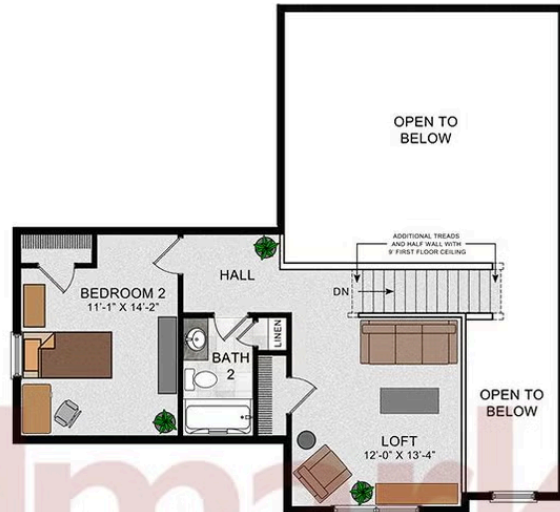
Document generated 12/25/25



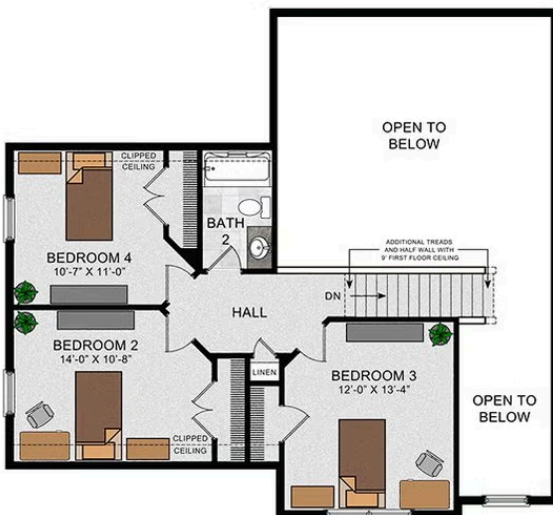
SECOND FLOOR



OPT. SECOND FLOOR
W/ LOFT



OPT. SECOND FLOOR
W/ BEDROOM 4



OPT. SECOND FLOOR
W/ LOFT AND BEDROOM 2 AND 3



© 2022 Landmark Builders, Inc. We enforce our intellectual property rights to the fullest extent permitted by applicable law. Elevations and landscaping are artists' conceptions only. Floor plans may vary depending on elevation selected. Actual construction documents take precedence over artwork.