



Single Family

## 834 Kimmerlings Rd

Lebanon, PA 17046

COMMUNITY SALES MANAGER

Lori Kahl

Call/Text 717-314-1448

**SALE PENDING**



**SALE PENDING**

Plan: Darien

4 Bedrooms

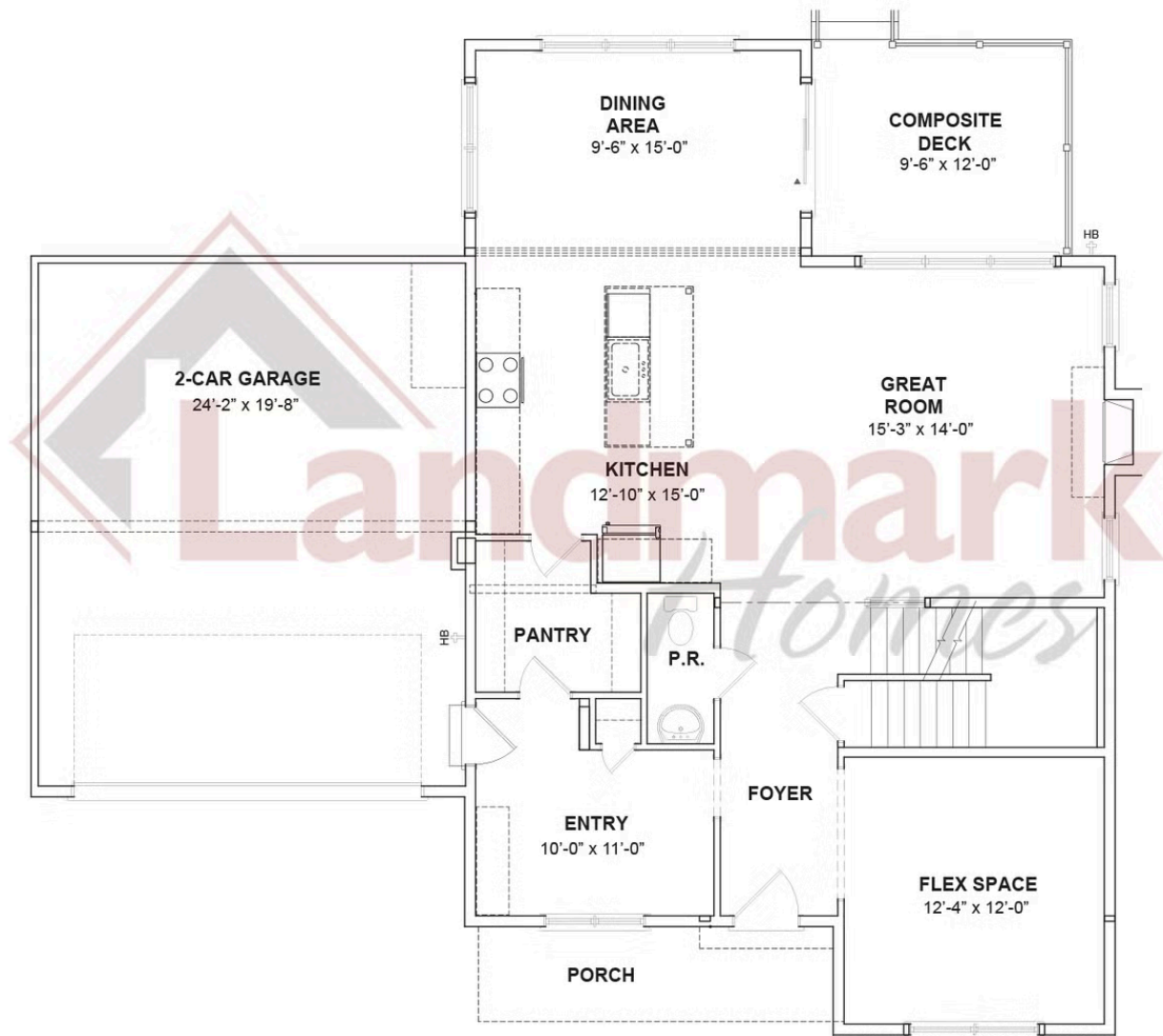
2.5 Bathrooms

2,658 Sq. Ft.

**\*SALE PENDING\*** -- This beautiful home with a welcoming front porch includes a 2-car garage with a large mudroom entry. The first floor boasts 9' ceilings and stylish vinyl plank flooring in the main living areas. To the front of the home is a convenient, carpeted flex room that can be used as a study, living room, or other versatile space. The kitchen is well-appointed with granite countertops, stainless-steel appliances, and a large pantry. The sunny dining area provides access to a composite deck. Open to the kitchen, the comfortable family room is warmed by a gas fireplace with a stone surround. The 2nd floor owner's suite features an expansive closet and a private bathroom with a 5' shower and double bowl vanity. Adjacent to the suite are 3 additional bedrooms, a full bathroom, a spacious rec room, and a convenient laundry room.



FIRST FLOOR



© 2025 Landmark Builders, Inc. We enforce our intellectual property rights to the fullest extent permitted by applicable law. Elevations and landscaping are artists' conceptions only. Floor plans may vary depending on elevation selected. Actual construction documents take precedence over artwork.

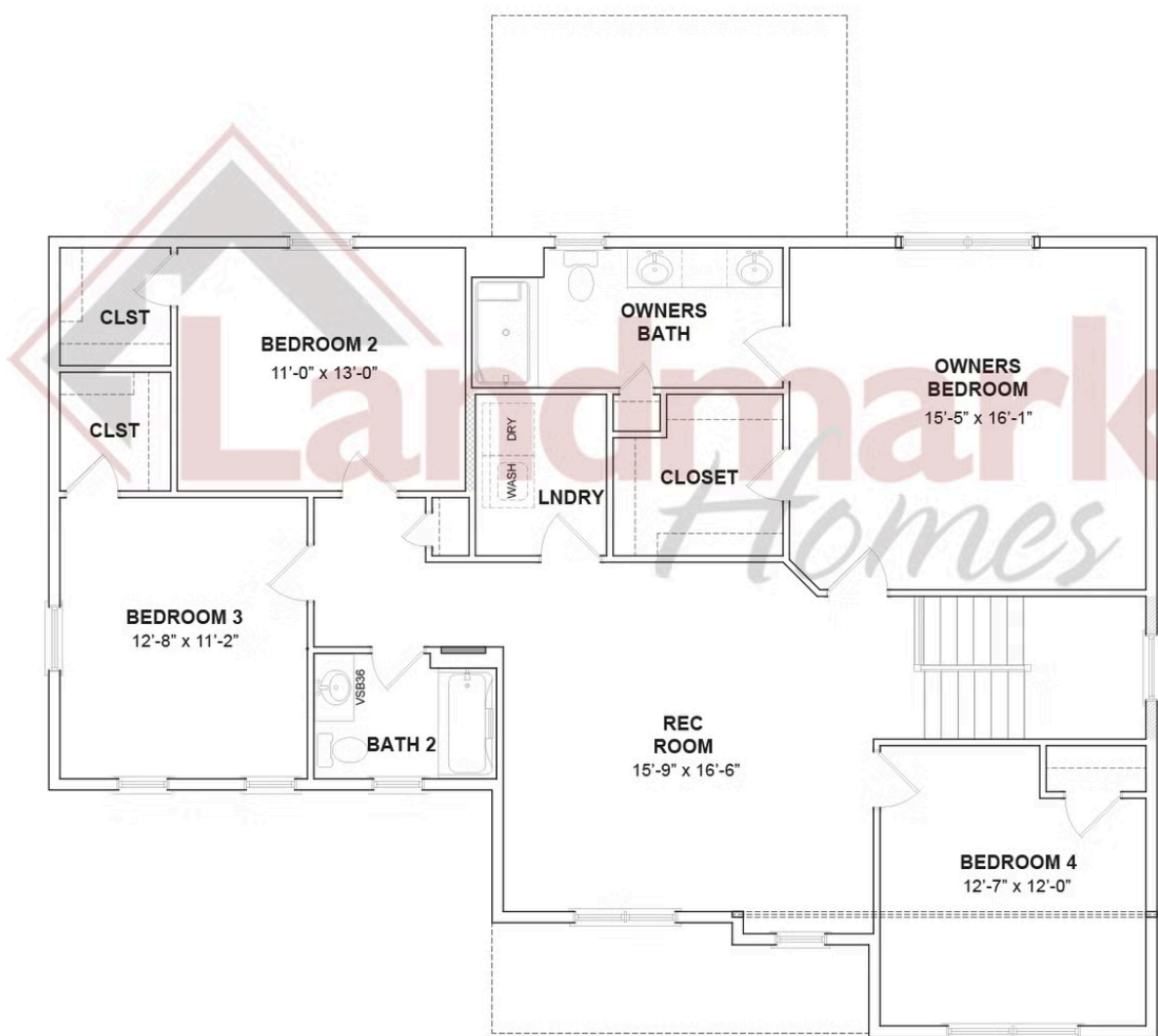


Single Family  
**834 Kimmerlings Rd**  
Lebanon, PA 17046

**COMMUNITY SALES MANAGER**

Lori Kahl  
Call/Text 717-314-1448

## SECOND FLOOR



© 2025 Landmark Builders, Inc. We enforce our intellectual property rights to the fullest extent permitted by applicable law. Elevations and landscaping are artists' conceptions only. Floor plans may vary depending on elevation selected. Actual construction documents take precedence over artwork.

