



Single Family  
**Westminster**  
Available in 2 Communities



# Call for Price

- 2 Elevations Available
- 4 Bedrooms
- 3.5 Bathrooms
- 4,057+ Sq. Ft.
- 2 Car Garage

This spacious two-story home with over 4,000 sq feet offers many luxurious amenities and open spaces. The 1st floor includes a study with optional coffered ceiling, formal dining room, large family room with 2-story ceilings, optional morning room, breakfast area open to the kitchen with space to add a second island, and an owner's suite with private bath and expansive closet. 4 bedrooms and 3 1/2 baths, plus a bonus room on the lower level.

## Available Elevations



Westminster C Trademark Elevation



Westminster B Transitional Elevation

Document generated 4/24/26

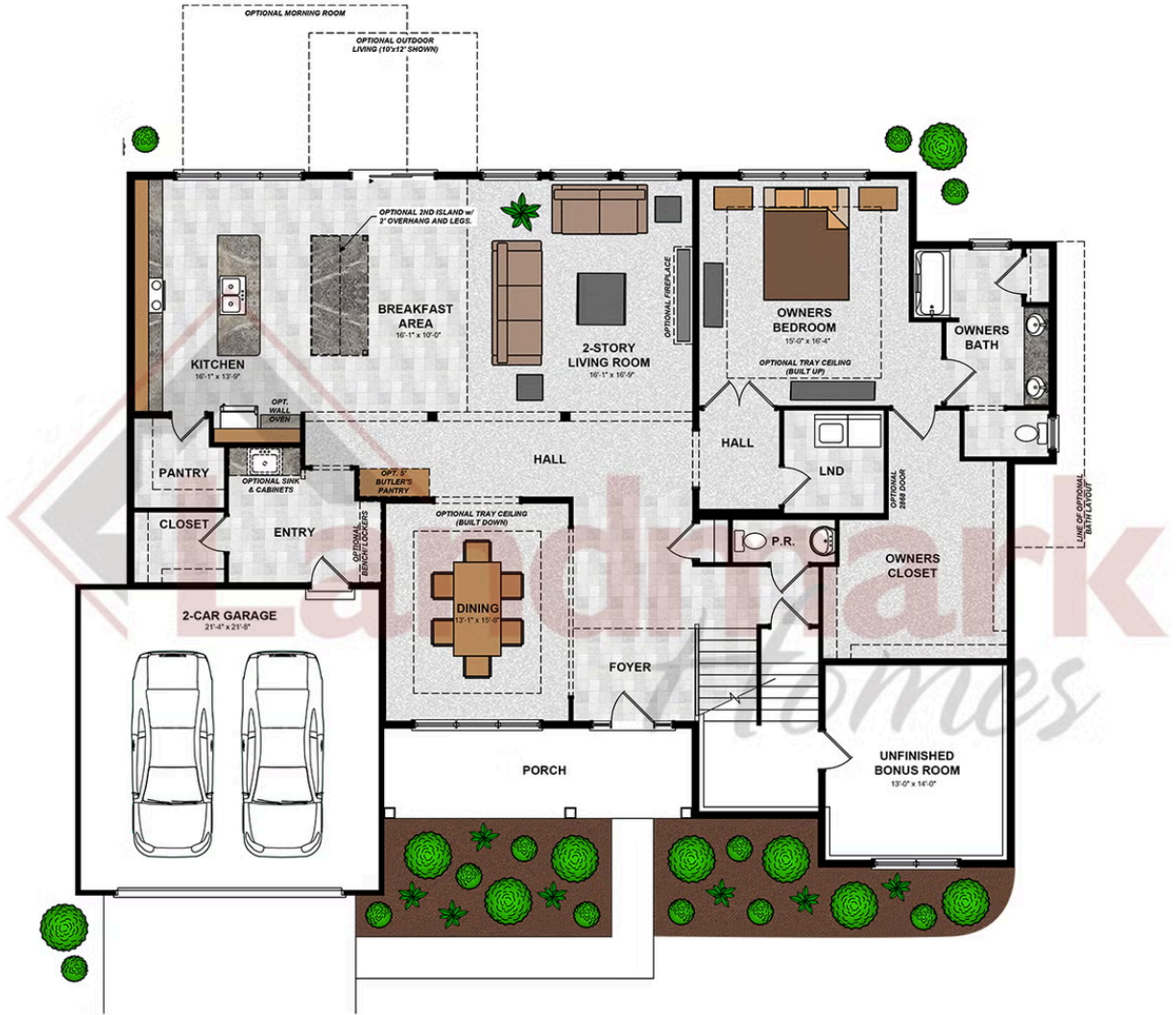
© 2026 Landmark Builders, Inc. We enforce our intellectual property rights to the fullest extent permitted by applicable law. Elevations and landscaping are artists' conceptions only. Actual construction documents take precedence over artwork. Similar photos shown are for representative purposes only. Details subject to





Single Family  
**Westminster**  
Available in 2 Communities

FIRST FLOOR



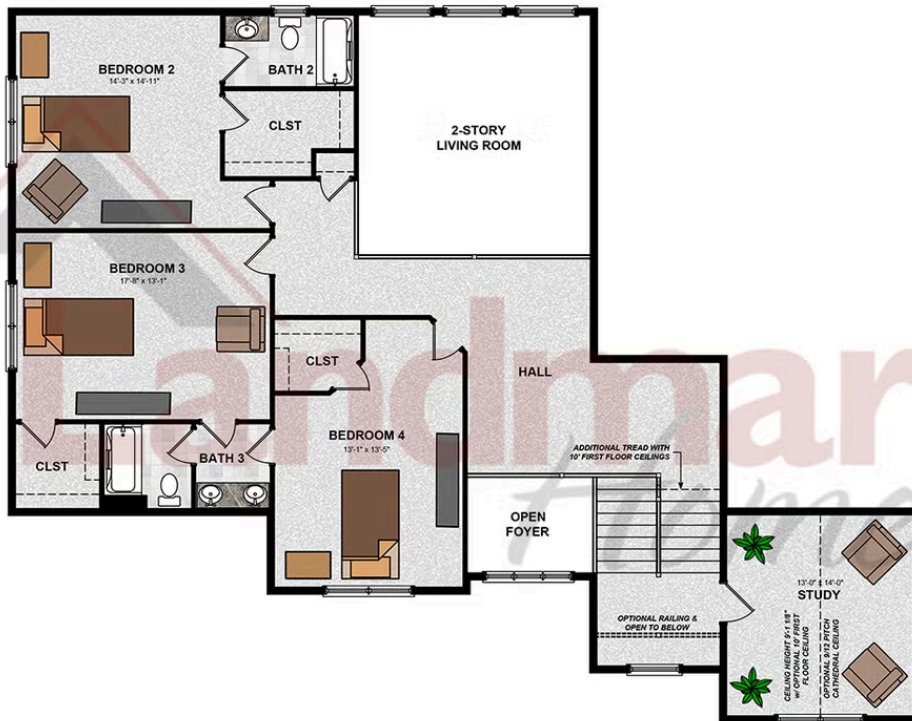
© 2025 Landmark Builders, Inc. We enforce our intellectual property rights to the fullest extent permitted by applicable law. Elevations and landscaping are artists' conceptions only. Floor plans may vary depending on elevation selected. Actual construction documents take precedence over artwork.

© 2026 Landmark Builders, Inc. We enforce our intellectual property rights to the fullest extent permitted by applicable law. Elevations and landscaping are artists' conceptions only. Actual construction documents take precedence over artwork. Similar photos shown are for representative purposes only. Details subject to change without notification. See Community Sales Manager for details.

Document generated 4/24/26



SECOND FLOOR



© 2025 Landmark Builders, Inc. We enforce our intellectual property rights to the fullest extent permitted by applicable law. Elevations and landscaping are artists' conceptions only. Floor plans may vary depending on elevation selected. Actual construction documents take precedence over artwork.

© 2026 Landmark Builders, Inc. We enforce our intellectual property rights to the fullest extent permitted by applicable law. Elevations and landscaping are artists' conceptions only. Actual construction documents take precedence over artwork. Similar photos shown are for representative purposes only. Details subject to change without notification. See Community Sales Manager for details.



## Available Communities



### Hawk Valley Estates

200 West Valley Rd  
 Denver, PA 17517

1/2 Acre Homesites

Single Family Homes Starting at  
**\$574,000**

3-5 Bed 2.5-3.5 Bath 2180+ Ft<sup>2</sup>



### Quinn Estates

220 N Cornwall Rd E  
 Lebanon, PA 17042

1 Acre Homesites

Single Family Homes

3-4 Bed 2-3.5 Bath 2386+ Ft<sup>2</sup>

