



Single Family
Westbrooke
Available in 8 Communities



Call for Price

- 3 Elevations Available
- 4 Bedrooms
- 2.5 Bathrooms
- 2,868+ Sq. Ft.
- 2 Car Garage

Distinguished, elegant exterior offers a timeless design with all the amenities you need for your busy lifestyle. The ample eat-in kitchen features abundant countertops and cabinets. Open and spacious family room perfect for entertaining or growing families. Many custom features at attainable prices.

Available Elevations



Upgraded C Trademark



Upgraded A Traditional



Upgraded B Transitional

Document generated 4/24/26

© 2026 Landmark Builders, Inc. We enforce our intellectual property rights to the fullest extent permitted by applicable law. Elevations and landscaping are artists' conceptions only. Actual construction documents take precedence over artwork. Similar photos shown are for representative purposes only. Details subject to





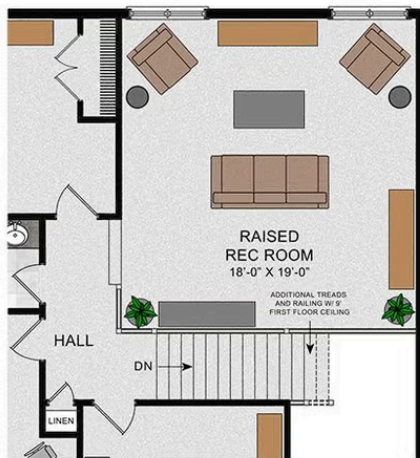
© 2023 Landmark Builders, Inc. We enforce our intellectual property rights to the fullest extent permitted by applicable law. Elevations and landscaping are artists' conceptions only. Floor plans may vary depending on elevation selected. Actual construction documents take precedence over artwork.

© 2026 Landmark Builders, Inc. We enforce our intellectual property rights to the fullest extent permitted by applicable law. Elevations and landscaping are artists' conceptions only. Actual construction documents take precedence over artwork. Similar photos shown are for representative purposes only. Details subject to change without notification. See Community Sales Manager for details.

SECOND FLOOR



OPT. RAISED REC ROOM



OPT. BATH 3 LAYOUT



© 2023 Landmark Builders, Inc. We enforce our intellectual property rights to the fullest extent permitted by applicable law. Elevations and landscaping are artists' conceptions only. Floor plans may vary depending on elevation selected. Actual construction documents take precedence over artwork.

© 2026 Landmark Builders, Inc. We enforce our intellectual property rights to the fullest extent permitted by applicable law. Elevations and landscaping are artists' conceptions only. Actual construction documents take precedence over artwork. Similar photos shown are for representative purposes only. Details subject to change without notification. See Community Sales Manager for details.



Single Family Westbrooke

Available in 8 Communities

Available Communities 1/2



Hawk Valley Estates

200 West Valley Rd
Denver, PA 17517

1/2 Acre Homesites

Single Family Homes Starting at
\$574,000

3-5 Bed 2.5-3.5 Bath 2180+ Ft²



Mountaindale

4817 Mountainrise Drive
Harrisburg, PA 17110

Spacious, Wooded Homesites

Single Family Homes Starting at
\$704,700

3-4 Bed 2.5-3.5 Bath 2711+ Ft²



Mountain View Estates

114 Blue Mountain Blvd
Carlisle, PA 17013

Mountain Views and Generous Homesites

Single Family Homes Starting at
\$470,400

2-5 Bed 2-3 Bath 1829+ Ft²



Summer Layne

501 Sunset Blvd
Annville, PA 17003

Palmyra Area School District

Single Family Homes Starting at
\$532,100

3-5 Bed 2-4 Bath 2142+ Ft²



Wyndale

108 Wyndale Dr
Ephrata, PA 17522

Walking Trails and Playground

Single Family Homes Starting at
\$512,700

2-4 Bed 2-3.5 Bath 1839+ Ft²



Copper Ridge Single Family

157 Copper Ridge Dr
Newmanstown, PA 17073

Stunning Hilltop Views

Single Family Homes Starting at
\$439,100

2-4 Bed 2-2.5 Bath 1839+ Ft²

Document generated 4/24/26

© 2026 Landmark Builders, Inc. We enforce our intellectual property rights to the fullest extent permitted by applicable law. Elevations and landscaping are artists' conceptions only. Actual construction documents take precedence over artwork. Similar photos shown are for representative purposes only. Details subject to





Single Family

Westbrooke

Available in 8 Communities

Available Communities 2/2



Fox Bend

250 Dahlia Circle
Lebanon, PA 17042

Generous Homesites with Scenic Views

Single Family Homes Starting at
\$496,700

3-4 Bed 2.5-3.5 Bath 2180+ Ft²



The Meadows at Colonial Club

1002 Edorma Court
Harrisburg, PA 17112

Large Homesites

Single Family Homes

4 Bed 2.5-3.5 Bath 2868+ Ft²

Document generated 4/24/26

© 2026 Landmark Builders, Inc. We enforce our intellectual property rights to the fullest extent permitted by applicable law. Elevations and landscaping are artists' conceptions only. Actual construction documents take precedence over artwork. Similar photos shown are for representative purposes only. Details subject to

