



Single Family

## Westbrooke

Available in 10 Communities



## Call for Price

3 Elevations Available

4 Bedrooms

2.5 Bathrooms

2,868+ Sq. Ft.

2 Car Garage

Distinguished, elegant exterior offers a timeless design with all the amenities you need for your busy lifestyle. The ample eat-in kitchen features abundant countertops and cabinets. Open and spacious family room perfect for entertaining or growing families. Many custom features at attainable prices.

### Available Elevations



Upgraded C Trademark



Upgraded A Traditional



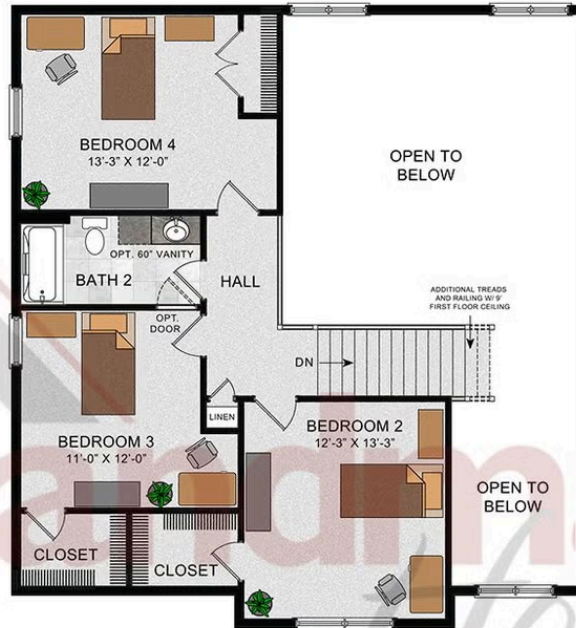
Upgraded B Transitional



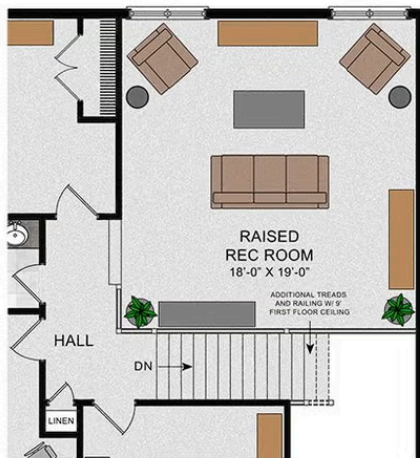


© 2023 Landmark Builders, Inc. We enforce our intellectual property rights to the fullest extent permitted by applicable law. Elevations and landscaping are artists' conceptions only. Floor plans may vary depending on elevation selected. Actual construction documents take precedence over artwork.

## SECOND FLOOR



### OPT. RAISED REC ROOM



### OPT. BATH 3 LAYOUT



© 2023 Landmark Builders, Inc. We enforce our intellectual property rights to the fullest extent permitted by applicable law. Elevations and landscaping are artists' conceptions only. Floor plans may vary depending on elevation selected. Actual construction documents take precedence over artwork.





Single Family

## Westbrooke

Available in 10 Communities

### Available Communities 1/2



#### Hawk Valley Estates

200 West Valley Rd  
Denver, PA 17517

1/2 Acre Homesites

Single Family Homes Starting at  
**\$573,000**

3-4 Bed 2.5-3.5 Bath 2180+ Ft<sup>2</sup>



#### Mountaindale

4817 Mountainrise Drive  
Harrisburg, PA 17110

Spacious, Wooded Homesites

Single Family Homes Starting at  
**\$710,400**

3-4 Bed 2-3 Bath 2711+ Ft<sup>2</sup>



#### Mountain View Estates

114 Blue Mountain Blvd  
Carlisle, PA 17013

Mountain Views and Generous  
Homesites

Single Family Homes Starting at  
**\$469,400**

2-5 Bed 2-3 Bath 1829+ Ft<sup>2</sup>



#### Summer Layne

501 Sunset Blvd  
Annville, PA 17003

Palmyra Area School District

Single Family Homes Starting at  
**\$534,300**

3-5 Bed 2-4 Bath 2142+ Ft<sup>2</sup>



#### Wyndale

124 Wyndale Dr  
Ephrata, PA 17522

Walking Trails and Playground

Single Family Homes Starting at  
**\$493,000**

2-5 Bed 2-3.5 Bath 1839+ Ft<sup>2</sup>



#### Copper Ridge Single Family

157 Copper Ridge Dr  
Newmanstown, PA 17073

Stunning Hilltop Views

Single Family Homes Starting at  
**\$431,500**

2-5 Bed 2-3 Bath 1839+ Ft<sup>2</sup>







Single Family

## Westbrooke

Available in 10 Communities

### Available Communities 2/2



#### Fox Bend

250 Dahlia Circle  
Lebanon, PA 17042

Generous Homesites with Scenic Views

Single Family Homes Starting at  
**\$498,200**

3-4 Bed 2-3.5 Bath 2180+ Ft<sup>2</sup>



#### Trindle Place

104 Notting Hill Court  
Mechanicsburg, PA 17050

Cumberland Valley Schools

Single Family Homes Starting at  
**\$518,900**

3-5 Bed 2-3 Bath 2142+ Ft<sup>2</sup>



#### The Meadows at Colonial Club

1002 Edorma Court  
Harrisburg, PA 17112

Large Homesites

Single Family Homes Starting at  
**\$756,900**

4-5 Bed 2-3 Bath 2868+ Ft<sup>2</sup>



#### Southgate

510 Bachman Rd  
Annville, PA 17003

Single Family Homes Starting at  
**\$466,400**

2-4 Bed 2-3.5 Bath 1839+ Ft<sup>2</sup>

