



Single Family
Stonecroft

Available in 6 Communities



Call for Price

2 Elevations Available

3 Bedrooms

2 Bathrooms

2,142+ Sq. Ft.

2 Car Garage

The Stonecroft is an upscale home offering one-floor living at its best. The family room is bright and welcoming with lofty windows and the option to add a fireplace and/or a cathedral ceiling. This central area gives easy access to the formal dining room, kitchen, breakfast area and rear patio. The owner's suite, a quiet retreat with plenty of space to relax, features an expansive closet and a large private bath. Two more bedrooms and a full bath are on the other side of the house. The study near the front entry brings in the sunlight with optional French doors and bay window, and can optionally serve as a 4th bedroom; if selecting this option, shared access to the owner's closet can also be selected, making it an ideal shared owner's suite. The Stonecroft Model has four elevations from which to choose. Other options include a full basement and storage above the garage.

Available Elevations



Upgraded Contemporary Elevation

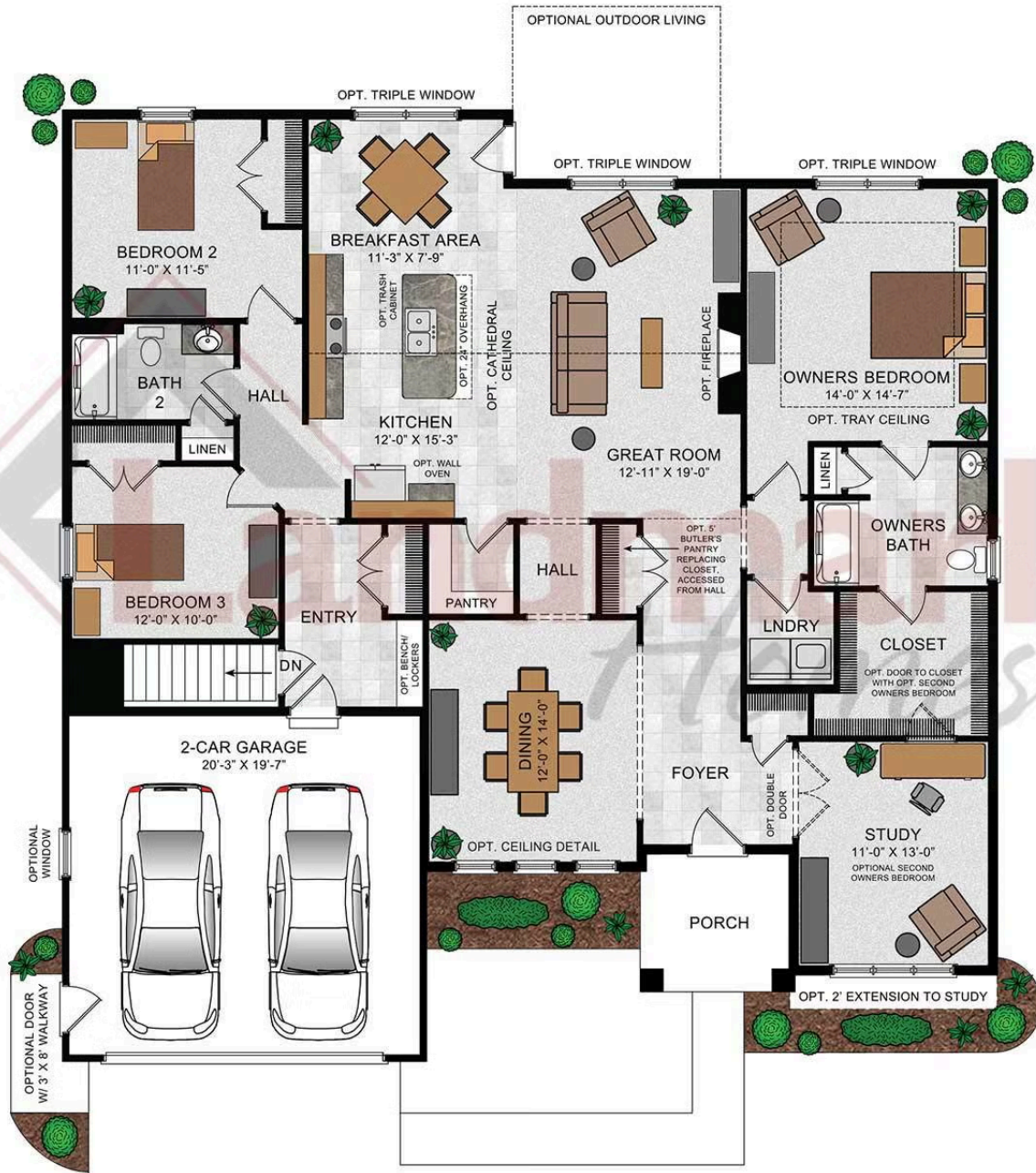


Upgraded B Transitional

Document generated 4/24/26

© 2026 Landmark Builders, Inc. We enforce our intellectual property rights to the fullest extent permitted by applicable law. Elevations and landscaping are artists' conceptions only. Actual construction documents take precedence over artwork. Similar photos shown are for representative purposes only. Details subject to





© 2023 Landmark Builders, Inc. We enforce our intellectual property rights to the fullest extent permitted by applicable law. Elevations and landscaping are artists' conceptions only. Floor plans may vary depending on elevation selected. Actual construction documents take precedence over artwork.

© 2026 Landmark Builders, Inc. We enforce our intellectual property rights to the fullest extent permitted by applicable law. Elevations and landscaping are artists' conceptions only. Actual construction documents take precedence over artwork. Similar photos shown are for representative purposes only. Details subject to change without notification. See Community Sales Manager for details.

Available Communities



Sweetbriar 55+ Living

604 Lilliana Dr
Lebanon, PA 17046

Low HOA

Single Family Homes Starting at
\$403,800

2-3 Bed 2-2.5 Bath 1507+ Ft²



Mountain View Estates

114 Blue Mountain Blvd
Carlisle, PA 17013

Mountain Views and Generous
Homesites

Single Family Homes Starting at
\$470,400

2-5 Bed 2-3 Bath 1829+ Ft²



Summer Layne

501 Sunset Blvd
Annville, PA 17003

Palmyra Area School District

Single Family Homes Starting at
\$532,100

3-5 Bed 2-4 Bath 2142+ Ft²



Wyndale

108 Wyndale Dr
Ephrata, PA 17522

Walking Trails and Playground

Single Family Homes Starting at
\$512,700

2-4 Bed 2-3.5 Bath 1839+ Ft²



Copper Ridge Single Family

157 Copper Ridge Dr
Newmanstown, PA 17073

Stunning Hilltop Views

Single Family Homes Starting at
\$439,100

2-4 Bed 2-2.5 Bath 1839+ Ft²



Southgate

129 Alexandria Dr
Annville, PA 17003

Single Family Homes Starting at
\$477,600

2-4 Bed 2-3.5 Bath 1911+ Ft²