



Single Family
Stonecraft

Available in 7 Communities



Call for Price

2 Elevations Available

3 Bedrooms

2 Bathrooms

2,142+ Sq. Ft.

2 Car Garage

The Stonecraft is an upscale home offering one-floor living at its best. The family room is bright and welcoming with lofty windows and the option to add a fireplace and/or a cathedral ceiling. This central area gives easy access to the formal dining room, kitchen, breakfast area and rear patio. The owner's suite, a quiet retreat with plenty of space to relax, features an expansive closet and a large private bath. Two more bedrooms and a full bath are on the other side of the house. The study near the front entry brings in the sunlight with optional French doors and bay window, and can optionally serve as a 4th bedroom; if selecting this option, shared access to the owner's closet can also be selected, making it an ideal shared owner's suite. The Stonecraft Model has four elevations from which to choose. Other options include a full basement and storage above the garage.

Available Elevations

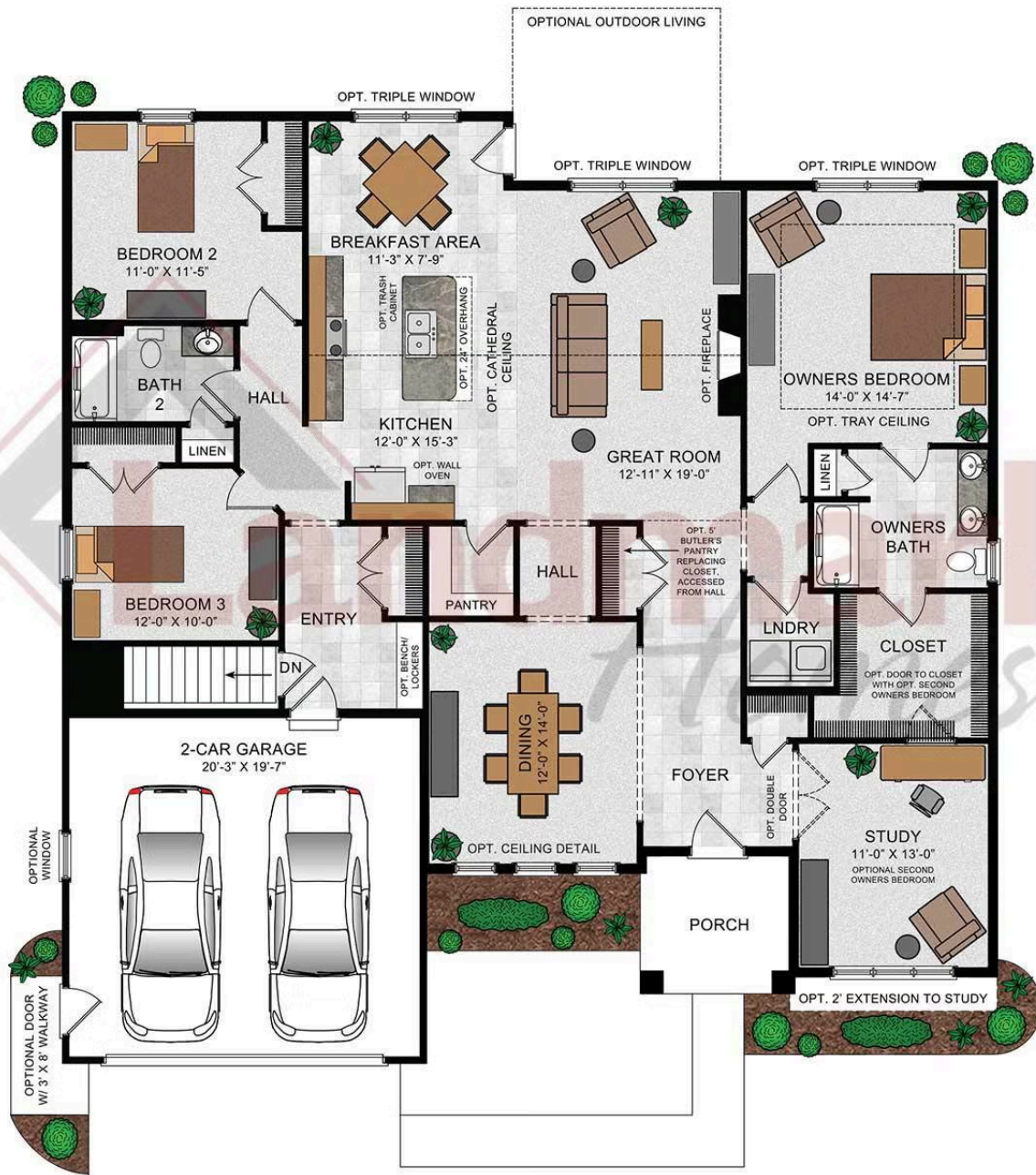


Upgraded Contemporary Elevation



Upgraded B Transitional





© 2023 Landmark Builders, Inc. We enforce our intellectual property rights to the fullest extent permitted by applicable law. Elevations and landscaping are artists' conceptions only. Floor plans may vary depending on elevation selected. Actual construction documents take precedence over artwork.



Single Family
Stonecroft

Available in 7 Communities

Available Communities 1/2



55+ Community

Sweetbriar 55+ Living

559 Bella May Circle
Lebanon, PA 17046

Low HOA

Single Family Homes Starting at
\$403,600

2-3 Bed 2 Bath 1507+ Ft²



Mountain View Estates

114 Blue Mountain Blvd
Carlisle, PA 17013

Mountain Views and Generous
Homesites

Single Family Homes Starting at
\$469,400

2-5 Bed 2-3 Bath 1829+ Ft²



Summer Layne

501 Sunset Blvd
Annville, PA 17003

Palmyra Area School District

Single Family Homes Starting at
\$534,300

3-5 Bed 2-4 Bath 2142+ Ft²



Wyndale

124 Wyndale Dr
Ephrata, PA 17522

Walking Trails and Playground

Single Family Homes Starting at
\$493,000

2-5 Bed 2-3.5 Bath 1839+ Ft²



Copper Ridge Single Family

157 Copper Ridge Dr
Newmanstown, PA 17073

Stunning Hilltop Views

Single Family Homes Starting at
\$431,500

2-5 Bed 2-3 Bath 1839+ Ft²



Only 2 Homesites Left!

Trindle Place

104 Notting Hill Court
Mechanicsburg, PA 17050

Cumberland Valley Schools

Single Family Homes Starting at
\$518,900

3-5 Bed 2-3 Bath 2142+ Ft²





Single Family

Stonecroft

Available in 7 Communities

Available Communities 2/2



Southgate

510 Bachman Rd
Annville, PA 17003

Single Family Homes Starting at

\$466,400

2-4 Bed 2-3.5 Bath 1839+ Ft²

