



Single Family
Southfield

Available in 2 Communities



Call for Price

4 Elevations Available

2 Bedrooms

2 Bathrooms

1,888+ Sq. Ft.

2 Car Garage

Ideal first-floor living with private owner's suite tucked away in its own corner of the home. With over 1,800 square feet, 2 bedrooms, and 2 full baths, plus open living areas, this is a perfect home for entertaining guests. The kitchen is open to a spacious family room and the sunny dining area. Off of the 2-car, alley load garage is a convenient mudroom entry.

Available Elevations



Upgraded C Trademark



Upgraded A Traditional



Upgraded B Transitional



Upgraded Contemporary

Document generated 4/24/26

© 2026 Landmark Builders, Inc. We enforce our intellectual property rights to the fullest extent permitted by applicable law. Elevations and landscaping are artists' conceptions only. Actual construction documents take precedence over artwork. Similar photos shown are for representative purposes only. Details subject to

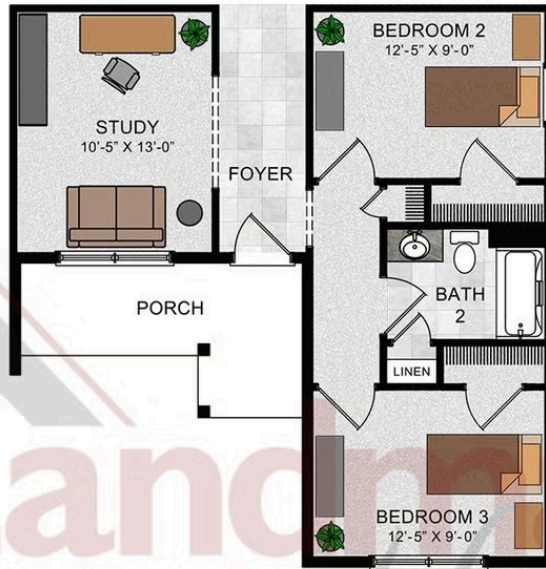




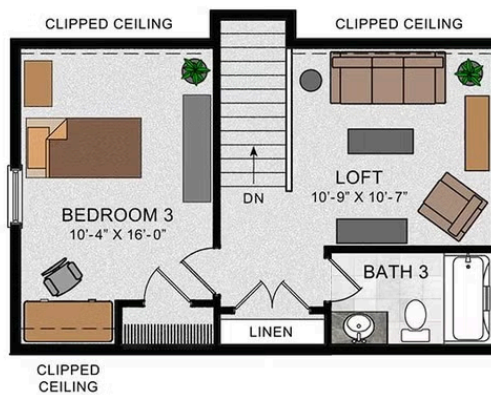
© 2022 Landmark Builders, Inc. We enforce our intellectual property rights to the fullest extent permitted by applicable law. Elevations and landscaping are artists' conceptions only. Floor plans may vary depending on elevation selected. Actual construction documents take precedence over artwork.

© 2026 Landmark Builders, Inc. We enforce our intellectual property rights to the fullest extent permitted by applicable law. Elevations and landscaping are artists' conceptions only. Actual construction documents take precedence over artwork. Similar photos shown are for representative purposes only. Details subject to change without notification. See Community Sales Manager for details.

OPTIONAL FIRST FLOOR
W/ BEDROOM 3



OPTIONAL SECOND FLOOR
W/ BEDROOM 3 AND LOFT



© 2022 Landmark Builders, Inc. We enforce our intellectual property rights to the fullest extent permitted by applicable law. Elevations and landscaping are artists' conceptions only. Floor plans may vary depending on elevation selected. Actual construction documents take precedence over artwork.

© 2026 Landmark Builders, Inc. We enforce our intellectual property rights to the fullest extent permitted by applicable law. Elevations and landscaping are artists' conceptions only. Actual construction documents take precedence over artwork. Similar photos shown are for representative purposes only. Details subject to change without notification. See Community Sales Manager for details.



Single Family
Southfield

Available in 2 Communities

Available Communities



Wright's Landing at Legacy Park

100 Legacy Park Drive
Mechanicsburg, PA 17055

Walking Trails, Playground,
Clubhouse

Single Family Homes Starting at
\$468,800

2-4 Bed 2-3.5 Bath 1672+ Ft²



55+ Community

Inspire 55+ at Legacy Park

100 Legacy Park Dr
Mechanicsburg, PA 17055

Private Clubhouse

Single Family Homes Starting at
\$508,900

2-3 Bed 2-2.5 Bath 1839+ Ft²

Document generated 4/24/26

© 2026 Landmark Builders, Inc. We enforce our intellectual property rights to the fullest extent permitted by applicable law. Elevations and landscaping are artists' conceptions only. Actual construction documents take precedence over artwork. Similar photos shown are for representative purposes only. Details subject to

