



Single Family
Silverbrooke
Available in 9 Communities



Call for Price

- 3 Elevations Available
- 4 Bedrooms
- 3.5 Bathrooms
- 3,824+ Sq. Ft.
- 2 Car Garage

Lots of room in this two-story, 3,800+ sq ft home with 4 bedrooms, 2.5 baths, and a 2-car garage. Plenty of space for relaxing and entertaining with a floor plan that includes a great room with 2-story ceilings, living room, study, and formal dining room. Kitchen opens to sunny breakfast area, with access to the patio (or optional deck). Owner's suite (with optional tray ceiling) includes double closets, and a private bath with optional freestanding tub.

Available Elevations



Upgraded C Trademark



Upgraded A Traditional



Upgraded B Transitional

Document generated 5/14/26

© 2026 Landmark Builders, Inc. We enforce our intellectual property rights to the fullest extent permitted by applicable law. Elevations and landscaping are artists' conceptions only. Actual construction documents take precedence over artwork. Similar photos shown are for representative purposes only. Details subject to

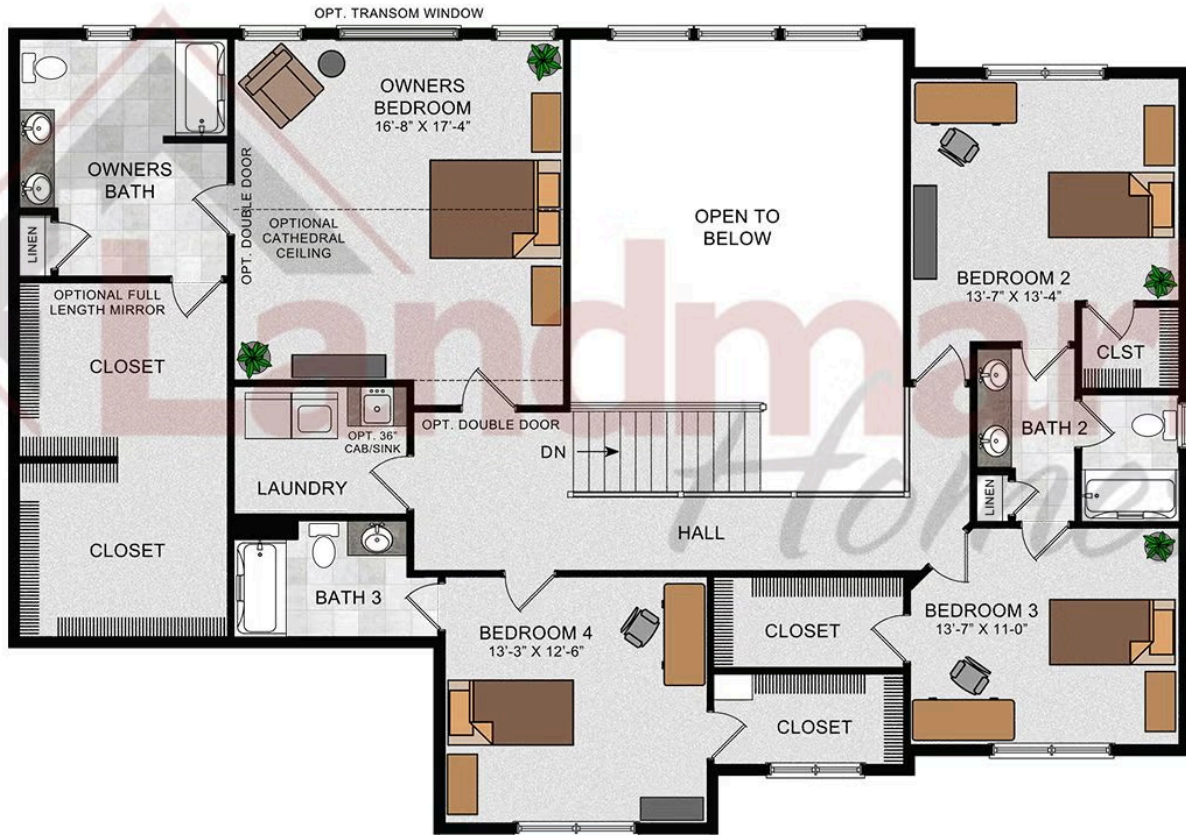




© 2021 Landmark Builders, Inc. We enforce our intellectual property rights to the fullest extent permitted by applicable law. Elevations and landscaping are artists' conceptions only. Floor plans may vary depending on elevation selected. Actual construction documents take precedence over artwork.

© 2026 Landmark Builders, Inc. We enforce our intellectual property rights to the fullest extent permitted by applicable law. Elevations and landscaping are artists' conceptions only. Actual construction documents take precedence over artwork. Similar photos shown are for representative purposes only. Details subject to change without notification. See Community Sales Manager for details.

SECOND FLOOR



© 2021 Landmark Builders, Inc. We enforce our intellectual property rights to the fullest extent permitted by applicable law. Elevations and landscaping are artists' conceptions only. Floor plans may vary depending on elevation selected. Actual construction documents take precedence over artwork.

© 2026 Landmark Builders, Inc. We enforce our intellectual property rights to the fullest extent permitted by applicable law. Elevations and landscaping are artists' conceptions only. Actual construction documents take precedence over artwork. Similar photos shown are for representative purposes only. Details subject to change without notification. See Community Sales Manager for details.

Document generated 5/14/26



Available Communities 1/2



Hawk Valley Estates

200 West Valley Rd
 Denver, PA 17517

1/2 Acre Homesites

Single Family Homes Starting at
\$574,000

3-5 Bed 2.5-3.5 Bath 2180+ Ft²



Mountaindale

4817 Mountainrise Drive
 Harrisburg, PA 17110

Spacious, Wooded Homesites

Single Family Homes Starting at
\$704,700

3-4 Bed 2.5-3.5 Bath 2711+ Ft²



Summer Layne

501 Sunset Blvd
 Annville, PA 17003

Palmyra Area School District

Single Family Homes Starting at
\$532,100

3-5 Bed 2-4 Bath 2142+ Ft²



Wyndale

108 Wyndale Dr
 Ephrata, PA 17522

Walking Trails and Playground

Single Family Homes Starting at
\$512,700

2-4 Bed 2-3.5 Bath 1839+ Ft²



Copper Ridge Single Family

157 Copper Ridge Dr
 Newmans town, PA 17073

Stunning Hilltop Views

Single Family Homes Starting at
\$439,100

2-4 Bed 2-2.5 Bath 1839+ Ft²



Fox Bend

250 Dahlia Circle
 Lebanon, PA 17042

Generous Homesites with Scenic Views

Single Family Homes Starting at
\$496,700

3-4 Bed 2.5-3.5 Bath 2180+ Ft²





Available Communities 2/2



The Meadows at Colonial Club

1002 Edorma Court
 Harrisburg, PA 17112

Large Homesites

Single Family Homes

4 Bed 2.5-3.5 Bath 2868+ Ft²



Southgate

140 Alexandria Dr
 Annville, PA 17003

Single Family Homes Starting at

\$477,600

2-4 Bed 2-3.5 Bath 1911+ Ft²



Quinn Estates

220 N Cornwall Rd E
 Lebanon, PA 17042

1 Acre Homesites

Single Family Homes

3-4 Bed 2-3.5 Bath 2510+ Ft²

