



Call for Price

1 Elevations Available

4 Bedrooms

3.5 Bathrooms

4,751+ Sq. Ft.

2 Car Garage

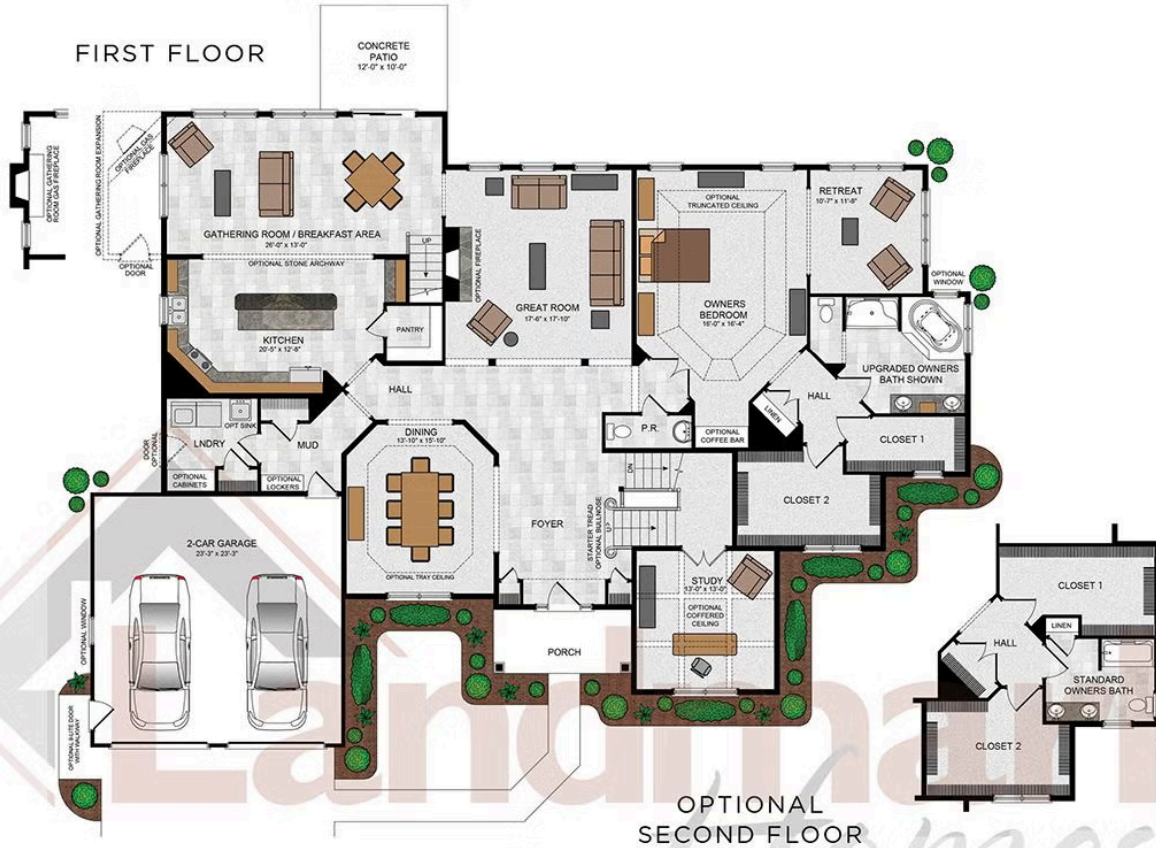
A unique combination of modern-day design, impressive architectural details and an abundance of energy efficient windows create an exterior look that is reminiscent of the Arts & Crafts era. Lots to love in this plan, with plenty of rooms to relax or entertain. A first floor owner's suite contains a luxurious bathroom, sitting area, and expansive closet. Large bedrooms, a large loft area, and much more.

Available Elevations



Upgraded C Elevation

FIRST FLOOR



OPTIONAL SECOND FLOOR

SECOND FLOOR



© 2020 Landmark Builders, Inc. We enforce our intellectual property rights to the fullest extent permitted by applicable law. Elevations and landscaping are artists' conceptions only. Floor plans may vary depending on elevation selected. Actual construction documents take precedence over artwork.

© 2026 Landmark Builders, Inc. We enforce our intellectual property rights to the fullest extent permitted by applicable law. Elevations and landscaping are artists' conceptions only. Actual construction documents take precedence over artwork. Similar photos shown are for representative purposes only. Details subject to change without notification. See Community Sales Manager for details.