



Single Family
Riley

Available in 2 Communities



Call for Price

2 Elevations Available

4 Bedrooms

2.5 Bathrooms

2,447+ Sq. Ft.

2 Car Garage

A beautiful, thoughtfully-planned 2-story home offering four roomy bedrooms and 2.5 baths. At the front of the home, a versatile flex room provides the perfect spot for a home office, study, or additional living space to suit your needs. Toward the back, the dining room sits just off the kitchen and opens to the family room, creating a comfortable flow for gathering and entertaining. The large family room with optional fireplace flows comfortably into the open kitchen with an added island for even more counter space. Upstairs, three secondary bedrooms accompany the owner's suite which includes a private bath and spacious closet.

Available Elevations



Upgraded C Trademark



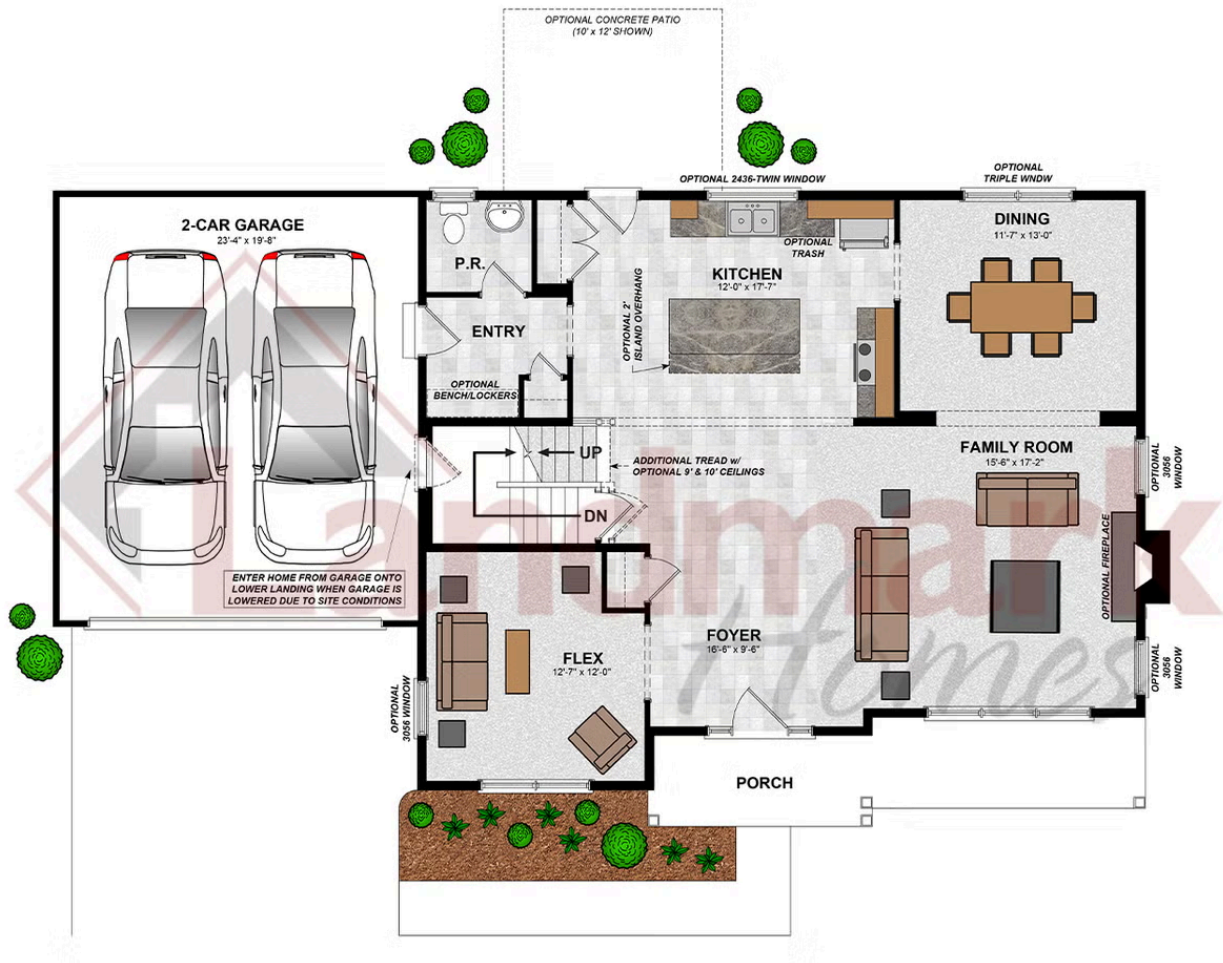
Upgraded B Transitional

Document generated 4/24/26

© 2026 Landmark Builders, Inc. We enforce our intellectual property rights to the fullest extent permitted by applicable law. Elevations and landscaping are artists' conceptions only. Actual construction documents take precedence over artwork. Similar photos shown are for representative purposes only. Details subject to



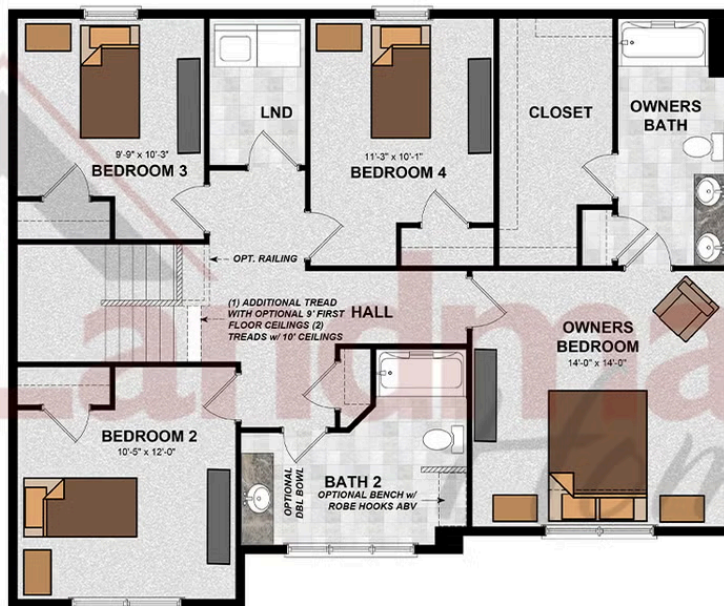
FIRST FLOOR



© 2025 Landmark Builders, Inc. We enforce our intellectual property rights to the fullest extent permitted by applicable law. Elevations and landscaping are artists' conceptions only. Floor plans may vary depending on elevation selected. Actual construction documents take precedence over artwork.

© 2026 Landmark Builders, Inc. We enforce our intellectual property rights to the fullest extent permitted by applicable law. Elevations and landscaping are artists' conceptions only. Actual construction documents take precedence over artwork. Similar photos shown are for representative purposes only. Details subject to change without notification. See Community Sales Manager for details.

FIRST FLOOR



© 2025 Landmark Builders, Inc. We enforce our intellectual property rights to the fullest extent permitted by applicable law. Elevations and landscaping are artists' conceptions only. Floor plans may vary depending on elevation selected. Actual construction documents take precedence over artwork.

© 2026 Landmark Builders, Inc. We enforce our intellectual property rights to the fullest extent permitted by applicable law. Elevations and landscaping are artists' conceptions only. Actual construction documents take precedence over artwork. Similar photos shown are for representative purposes only. Details subject to change without notification. See Community Sales Manager for details.

Document generated 4/24/26



Single Family
Riley
 Available in 2 Communities

Available Communities



Summer Layne

501 Sunset Blvd
 Annville, PA 17003

Palmyra Area School District

Single Family Homes Starting at
\$532,100

3-5 Bed 2-4 Bath 2142+ Ft²



Copper Ridge Single Family

157 Copper Ridge Dr
 Newmanstown, PA 17073

Stunning Hilltop Views

Single Family Homes Starting at
\$439,100

2-4 Bed 2-2.5 Bath 1839+ Ft²

Document generated 4/24/26

© 2026 Landmark Builders, Inc. We enforce our intellectual property rights to the fullest extent permitted by applicable law. Elevations and landscaping are artists' conceptions only. Actual construction documents take precedence over artwork. Similar photos shown are for representative purposes only. Details subject to

