



Single Family

Riley

Available in 2 Communities



Call for Price

2 Elevations Available

4 Bedrooms

2.5 Bathrooms

2,447+ Sq. Ft.

2 Car Garage

A beautiful, thoughtfully-planned 2-story home offering four roomy bedrooms and 2.5 baths. At the front of the home, a versatile flex room provides the perfect spot for a home office, study, or additional living space to suit your needs. Toward the back, the dining room sits just off the kitchen and opens to the family room, creating a comfortable flow for gathering and entertaining. The large family room with optional fireplace flows comfortably into the open kitchen with an added island for even more counter space. Upstairs, three secondary bedrooms accompany the owner's suite which includes a private bath and spacious closet.

Available Elevations

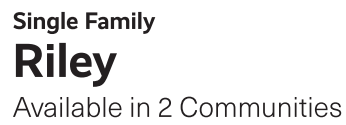


Upgraded C Trademark



Upgraded B Transitional





1st FLOOR

2-CAR GARAGE
23'-4" x 19'-6"

ENTER HOME FROM GARAGE ONTO LOWER LANDING WHEN GARAGE IS LOWERED DUE TO SITE CONDITIONS

PORCH

FOYER
16'-6" x 9'-6"

FLEX
12'-7" x 12'-0"

ENTRY

KITCHEN
12'-0" x 17'-7"

DINING
11'-7" x 13'-0"

FAMILY ROOM
15'-6" x 17'-2"

P.R.

OPTIONAL CONCRETE PATIO (10' x 12' SHOWN)

OPTIONAL 2436 TWIN WINDOW

OPTIONAL TRIPLE WINDOW

OPTIONAL 3056 WINDOW

OPTIONAL 3056 WINDOW

OPTIONAL 3056 WINDOW

OPTIONAL ISLAND OVERHANG

OPTIONAL BENCH/LOCKERS

OPTIONAL TRASH

UP

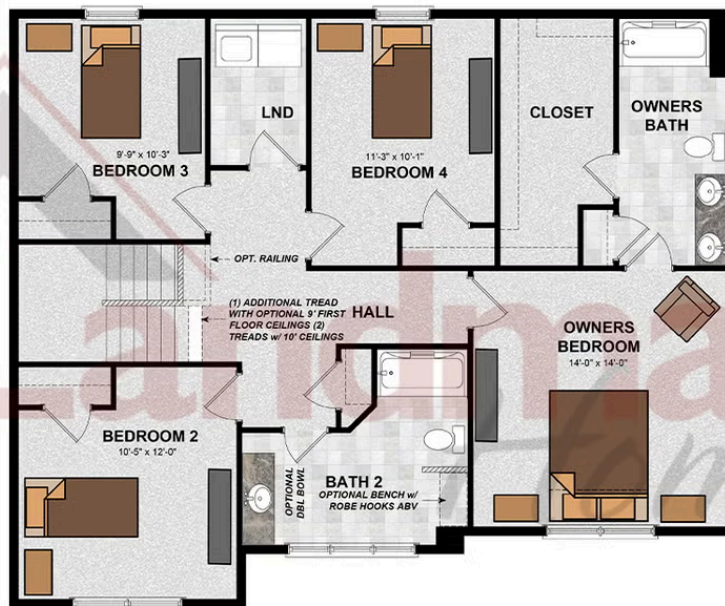
DN

ADDITIONAL TREAD w/ OPTIONAL 9' & 10' CEILINGS

OPTIONAL FIREPLACE

Document generated 2/22/26

FIRST FLOOR



© 2025 Landmark Builders, Inc. We enforce our intellectual property rights to the fullest extent permitted by applicable law. Elevations and landscaping are artists' conceptions only. Floor plans may vary depending on elevation selected. Actual construction documents take precedence over artwork.



Single Family

Riley

Available in 2 Communities

Available Communities



Summer Layne

501 Sunset Blvd
Annville, PA 17003

Palmyra Area School District

Single Family Homes Starting at
\$534,300

3-4 Bed 2-3.5 Bath 2142+ Ft²



Copper Ridge Single Family

157 Copper Ridge Dr
Newmanstown, PA 17073

Stunning Hilltop Views

Single Family Homes Starting at
\$438,000

2-5 Bed 2-3 Bath 1839+ Ft²

