



Single Family  
**Baxter**  
Cardinal Court

**COMMUNITY SALES MANAGER**  
Landmark Homes Online Advisor  
Call/Text 717-283-5790



## Call for Price

3 Elevations Available

3 Bedrooms

2.5 Bathrooms

2,070+ Sq. Ft.

2 Car Garage

Designed with both flexibility and comfort in mind, this two-story home offers a layout that adapts beautifully to everyday living. A charming front porch welcomes you inside, where a private study sits just off the foyer—ideal for working from home or creating a quiet retreat. Toward the rear of the home, the main living spaces open into a bright and inviting arrangement. The kitchen, complete with a central island and large pantry, flows effortlessly into the dining area and spacious family room—perfect for hosting or simply enjoying time together. Add a cathedral ceiling to make the family room even more spacious. An optional outdoor living extension enhances the connection to the backyard. Conveniently located on the main level, the owner's suite provides a peaceful escape with a well-appointed bath and generous closet space, offering the ease of first-floor living. Upstairs, a versatile loft creates an additional gathering space, complemented by two secondary bedrooms and a full bath—ideal for family members or guests seeking privacy.

### Available Elevations

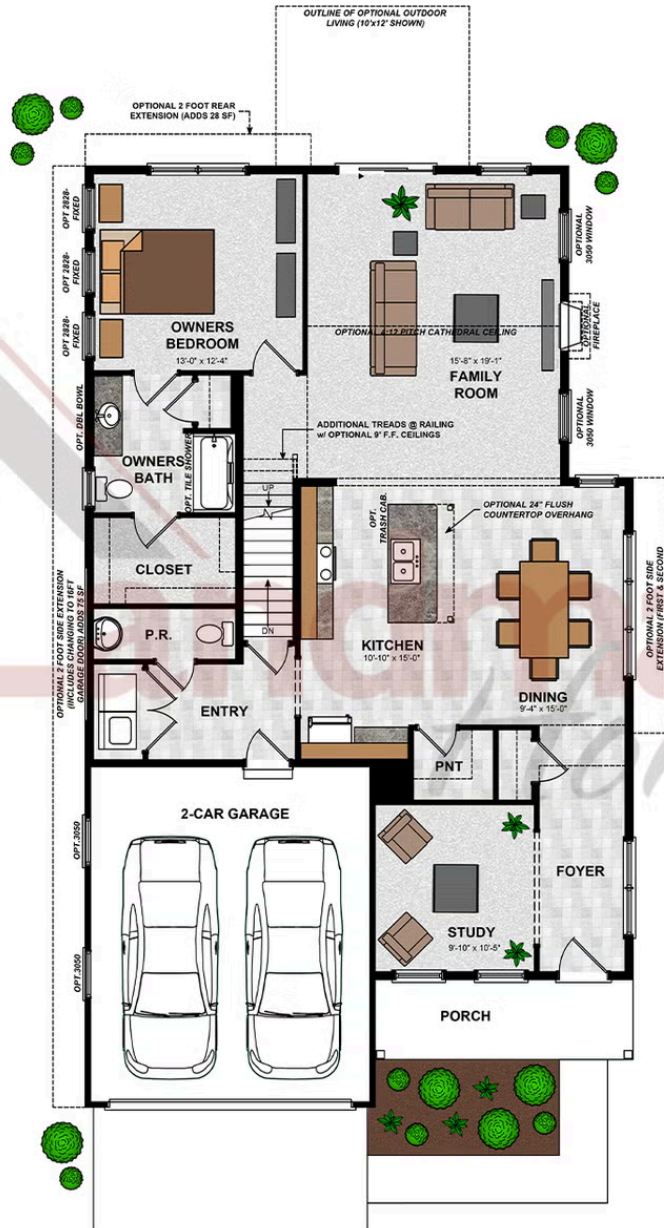


Document generated 5/7/26

© 2026 Landmark Builders, Inc. We enforce our intellectual property rights to the fullest extent permitted by applicable law. Elevations and landscaping are artists' conceptions only. Actual construction documents take precedence over artwork. Similar photos shown are for representative purposes only. Details subject to



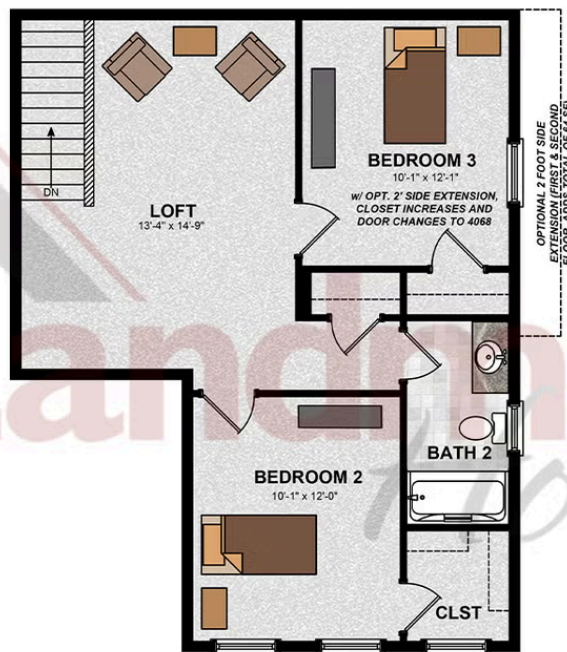
FIRST FLOOR



© 2026 Landmark Builders, Inc. We enforce our intellectual property rights to the fullest extent permitted by applicable law. Elevations and landscaping are artists' conceptions only. Floor plans may vary depending on elevation selected. Actual construction documents take precedence over artwork.

© 2026 Landmark Builders, Inc. We enforce our intellectual property rights to the fullest extent permitted by applicable law. Elevations and landscaping are artists' conceptions only. Actual construction documents take precedence over artwork. Similar photos shown are for representative purposes only. Details subject to change without notification. See Community Sales Manager for details.

## SECOND FLOOR



© 2026 Landmark Builders, Inc. We enforce our intellectual property rights to the fullest extent permitted by applicable law. Elevations and landscaping are artists' conceptions only. Floor plans may vary depending on elevation selected. Actual construction documents take precedence over artwork.

© 2026 Landmark Builders, Inc. We enforce our intellectual property rights to the fullest extent permitted by applicable law. Elevations and landscaping are artists' conceptions only. Actual construction documents take precedence over artwork. Similar photos shown are for representative purposes only. Details subject to change without notification. See Community Sales Manager for details.

Document generated 5/7/26