



Townhome
171 Marissa Court
Newmanstown, PA 17073

COMMUNITY SALES MANAGER

Kristin Larusso

Call/Text 717-419-1611

MOVE-IN READY



Home Priced at
\$349,200

Plan: Maya

3 Bedrooms

2.5 Bathrooms

1,743 Sq. Ft.

This 2-story townhome includes a 2-car garage, a 10ft basement with outdoor access, and durable vinyl plank flooring throughout the first floor. The kitchen features stainless steel appliances, quartz countertops, and a large center island. Across from the kitchen is a spacious family room with an ample amount of natural light and a dining area that provides access to the rear deck offering stunning views. The 2nd floor boasts an owner's suite with an expansive closet and a private bathroom, 2 additional bedrooms, a full bathroom, and a convenient laundry room.

Document generated 2/22/26





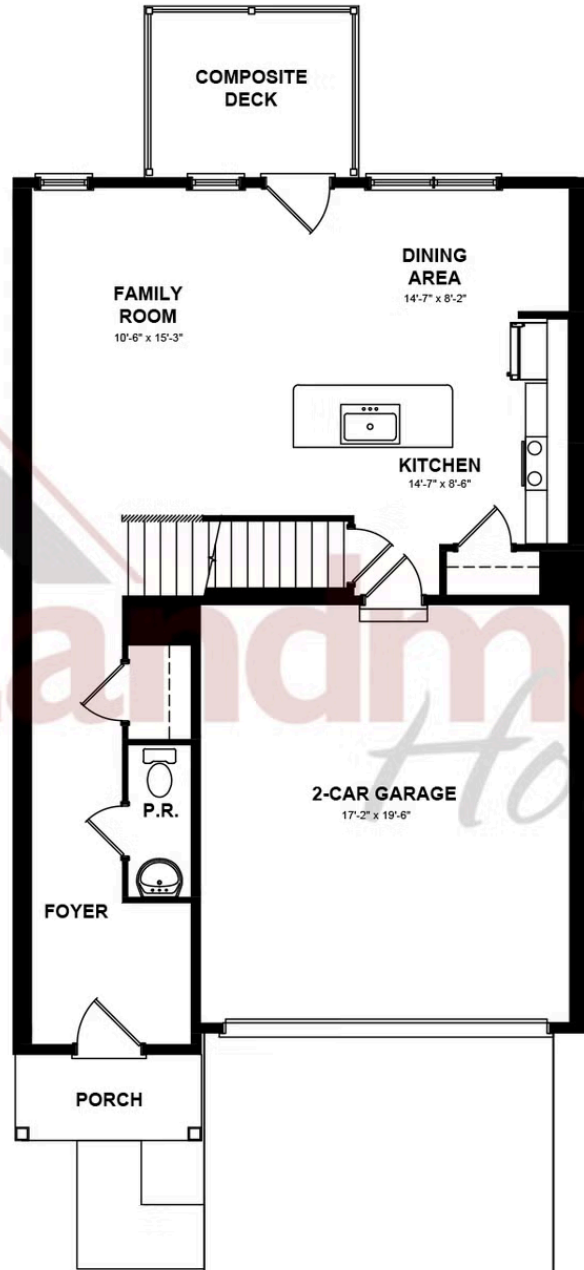
Townhome
171 Marissa Court
Newmanstown, PA 17073

COMMUNITY SALES MANAGER

Kristin Larusso

Call/Text 717-419-1611

SECOND FLOOR



© 2025 Landmark Builders, Inc. We enforce our intellectual property rights to the fullest extent permitted by applicable law. Elevations and landscaping are artists' conceptions only. Floor plans may vary depending on elevation selected. Actual construction documents take precedence over artwork.



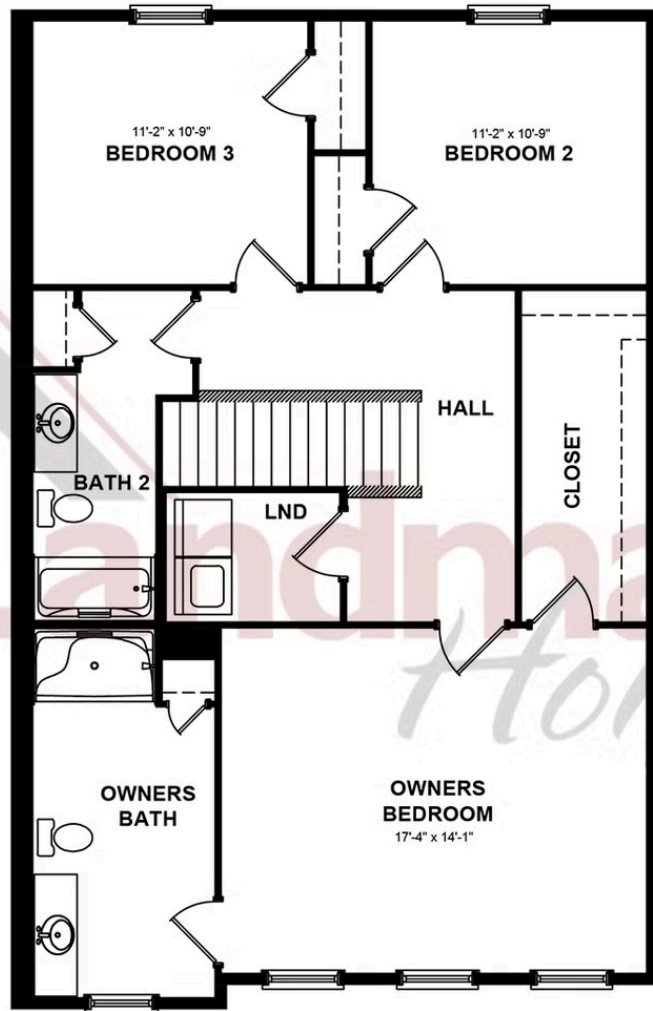


Townhome
171 Marissa Court
Newmanstown, PA 17073

COMMUNITY SALES MANAGER

Kristin Larusso
Call/Text 717-419-1611

SECOND FLOOR



© 2025 Landmark Builders, Inc. We enforce our intellectual property rights to the fullest extent permitted by applicable law. Elevations and landscaping are artists' conceptions only. Floor plans may vary depending on elevation selected. Actual construction documents take precedence over artwork.

