



Townhome  
**136 Marissa Court**  
Newmanstown, PA 17073

**COMMUNITY SALES MANAGER**

Kristin Larusso

Call/Text 717-419-1611

**UNDER CONSTRUCTION**



Home Priced at  
**\$369,700**

Plan: Maya

3 Bedrooms

2.5 Bathrooms

1,745 Sq. Ft.

**UNDER CONSTRUCTION – AVAILABLE THIS WINTER:** This 2-story townhome includes a 2-car garage, a 10ft basement with outdoor access, and durable vinyl plank flooring throughout the first floor. The kitchen features stainless steel appliances, quartz countertops, and a large center island. Across from the kitchen is a spacious family room with an ample amount of natural light and a dining area that provides access to the rear deck. The 2nd floor boasts an owner's suite with an expansive closet and a private bathroom, 2 additional bedrooms, a full bathroom, and a convenient laundry room.

Document generated 2/17/26

Call/Text Anytime (717) 283-5790

[info@ownalandmark.com](mailto:info@ownalandmark.com)

[OwnALandmark.com](http://OwnALandmark.com)



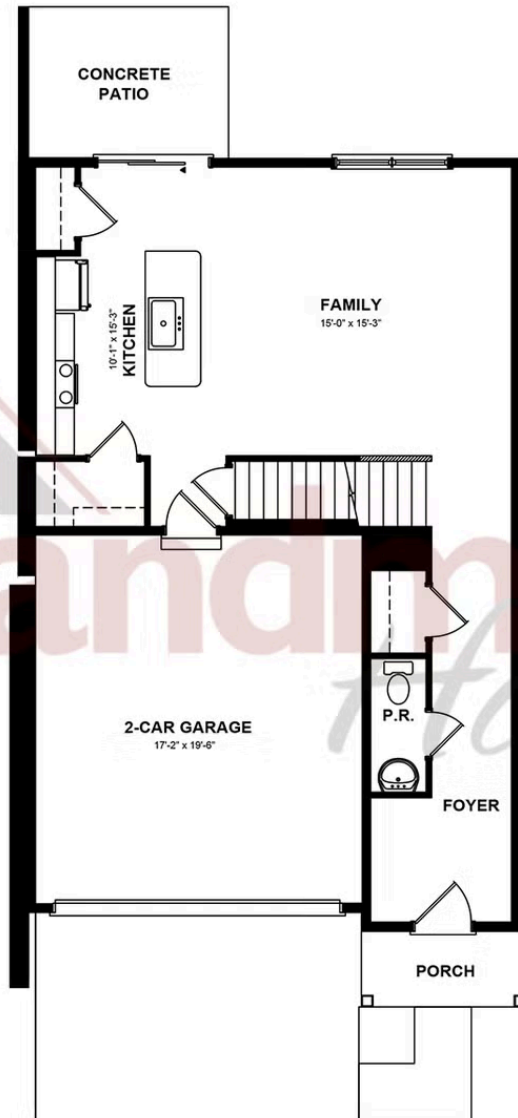


Townhome  
**136 Marissa Court**  
Newmanstown, PA 17073

**COMMUNITY SALES MANAGER**

Kristin Larusso  
Call/Text 717-419-1611

## FIRST FLOOR



© 2025 Landmark Builders, Inc. We enforce our intellectual property rights to the fullest extent permitted by applicable law. Elevations and landscaping are artists' conceptions only. Floor plans may vary depending on elevation selected. Actual construction documents take precedence over artwork.



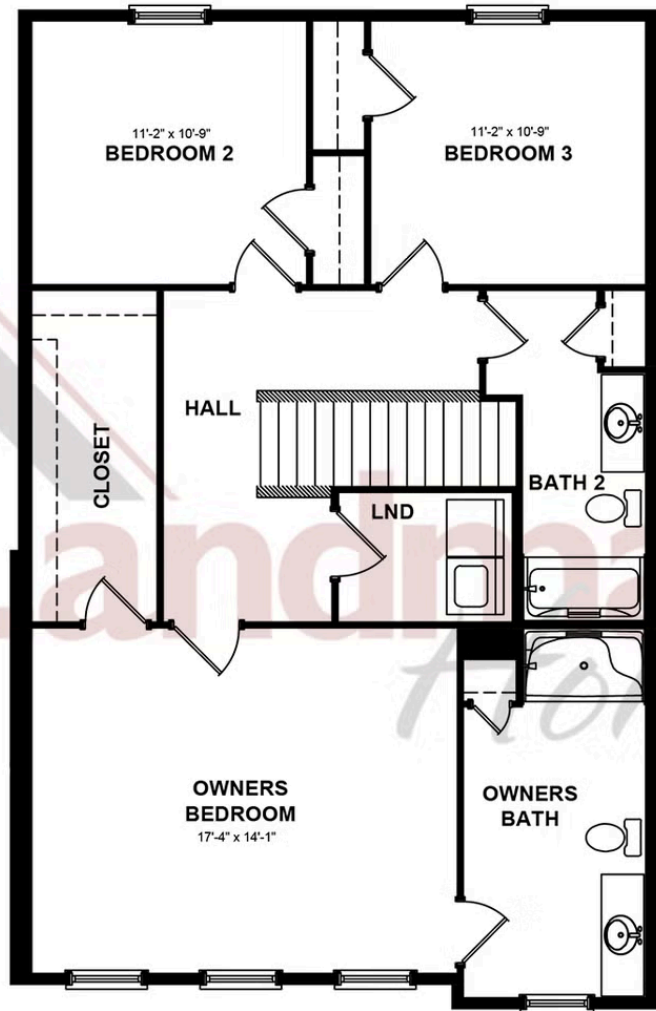


Townhome  
**136 Marissa Court**  
Newmanstown, PA 17073

**COMMUNITY SALES MANAGER**

Kristin Larusso  
Call/Text 717-419-1611

## SECOND FLOOR



© 2025 Landmark Builders, Inc. We enforce our intellectual property rights to the fullest extent permitted by applicable law. Elevations and landscaping are artists' conceptions only. Floor plans may vary depending on elevation selected. Actual construction documents take precedence over artwork.

Document generated 2/17/26

