



Townhome
132 Marissa Court
Newmanstown, PA 17073

COMMUNITY SALES MANAGER

Kristin Larusso

Call/Text 717-419-1611

UNDER CONSTRUCTION



Home Priced at
\$382,200

Plan: Maya

3 Bedrooms

2.5 Bathrooms

1,746 Sq. Ft.

UNDER CONSTRUCTION – AVAILABLE THIS WINTER: This 2-story, end-of-row townhome includes a 2-car garage, a 10ft Superior Wall basement with outdoor access, and durable vinyl plank flooring throughout the first floor. The kitchen, featuring stainless steel appliances, quartz countertops, and a large center island, provides access to the composite deck, perfect for entertaining. Across from the kitchen is a spacious family room with an ample amount of natural light. The 2nd floor boasts an owner's suite with an expansive closet and a private bathroom, 2 additional bedrooms, a full bathroom, and a convenient laundry room.



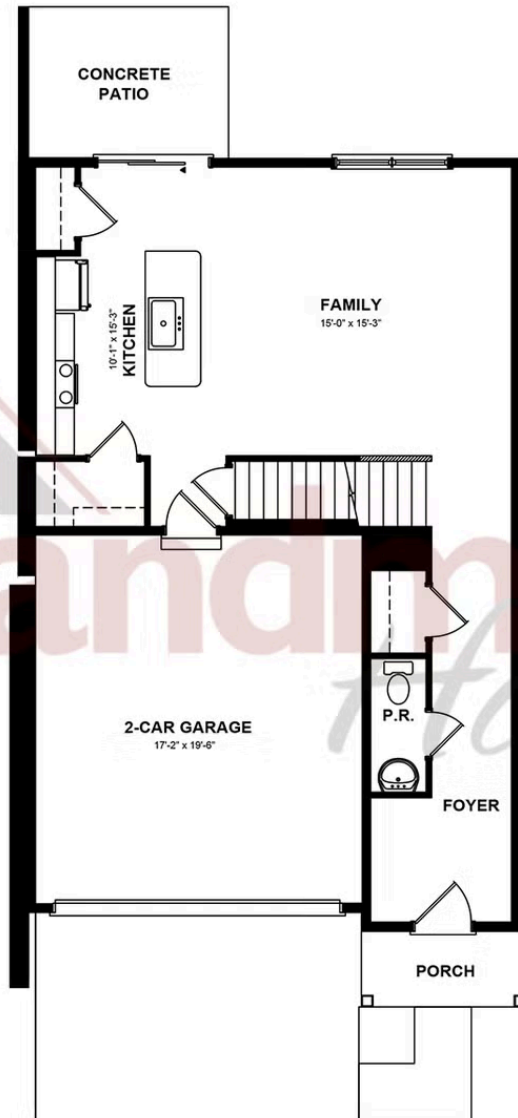


Townhome
132 Marissa Court
Newmanstown, PA 17073

COMMUNITY SALES MANAGER

Kristin Larusso
Call/Text 717-419-1611

FIRST FLOOR



© 2025 Landmark Builders, Inc. We enforce our intellectual property rights to the fullest extent permitted by applicable law. Elevations and landscaping are artists' conceptions only. Floor plans may vary depending on elevation selected. Actual construction documents take precedence over artwork.



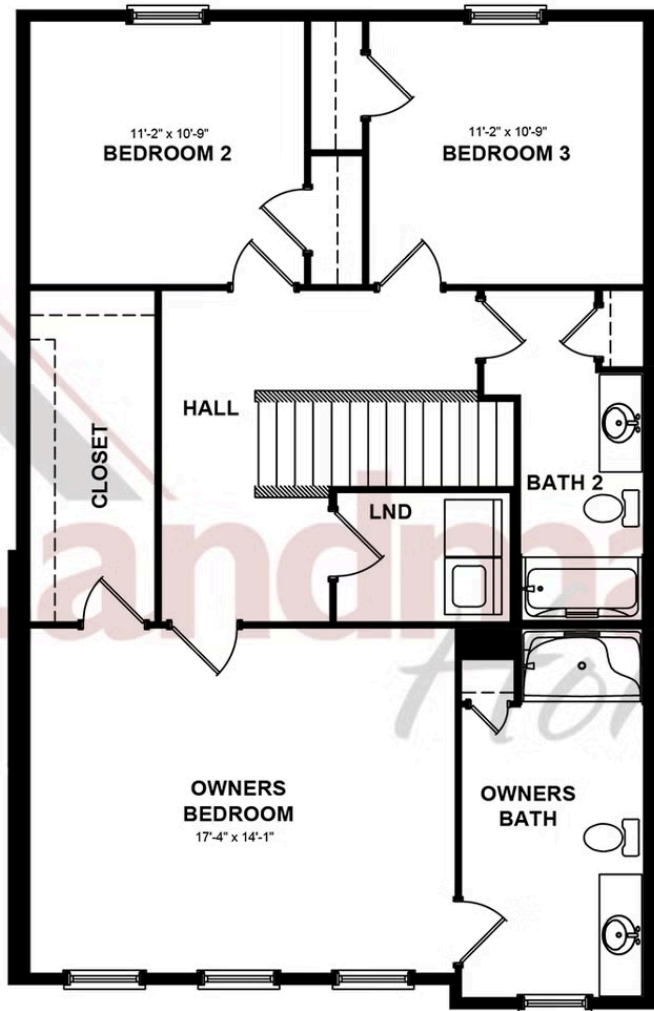


Townhome
132 Marissa Court
Newmanstown, PA 17073

COMMUNITY SALES MANAGER

Kristin Larusso
Call/Text 717-419-1611

SECOND FLOOR



© 2025 Landmark Builders, Inc. We enforce our intellectual property rights to the fullest extent permitted by applicable law. Elevations and landscaping are artists' conceptions only. Floor plans may vary depending on elevation selected. Actual construction documents take precedence over artwork.

Document generated 2/17/26

