



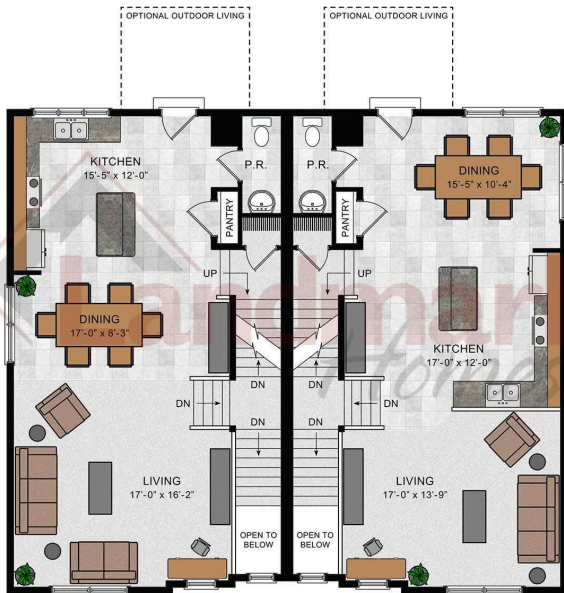
Home Priced at \$358,500

LINDEN BEDROOMS: 3 BATHROOMS: 2.5 SQ FT: 1,992

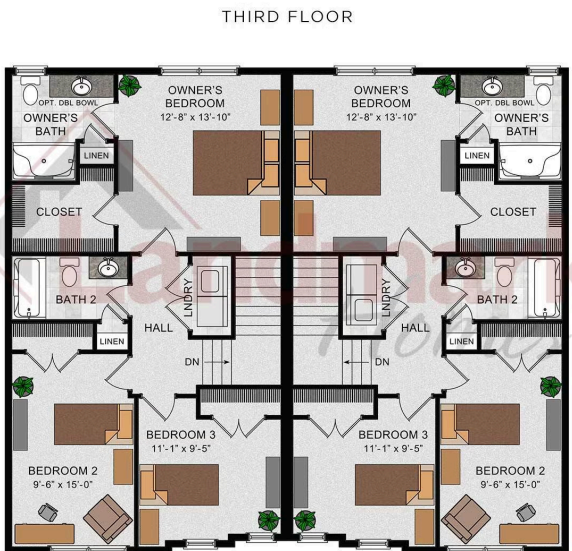
Copper Ridge Townhomes | 184 Marissa Court, Newmanstown, PA 17073 | Homesite: #101

Linden

Linden



SECOND FLOOR



THIRD FLOOR

© 2023 Landmark Builders, Inc. We enforce our intellectual property rights to the fullest extent permitted by applicable law. Elevations and landscaping are artists' conceptions only. Floor plans may vary depending on elevation selected. Actual construction documents take precedence over artwork.

© 2023 Landmark Builders, Inc. We enforce our intellectual property rights to the fullest extent permitted by applicable law. Elevations and landscaping are artists' conceptions only. Floor plans may vary depending on elevation selected. Actual construction documents take precedence over artwork.

Linden

OPTIONAL FIRST FLOOR PLAN  
W/ FINISHED BASEMENT

Document generated 5/26/26