



Townhome  
**182 Marissa Court**  
Newmanstown, PA 17073

**COMMUNITY SALES MANAGER**

Kristin Larusso

Call/Text 717-419-1611

**UNDER CONSTRUCTION**



Home Priced at  
**\$354,000**

Plan: Linden

Elevation: Linden Exterior

3 Bedrooms

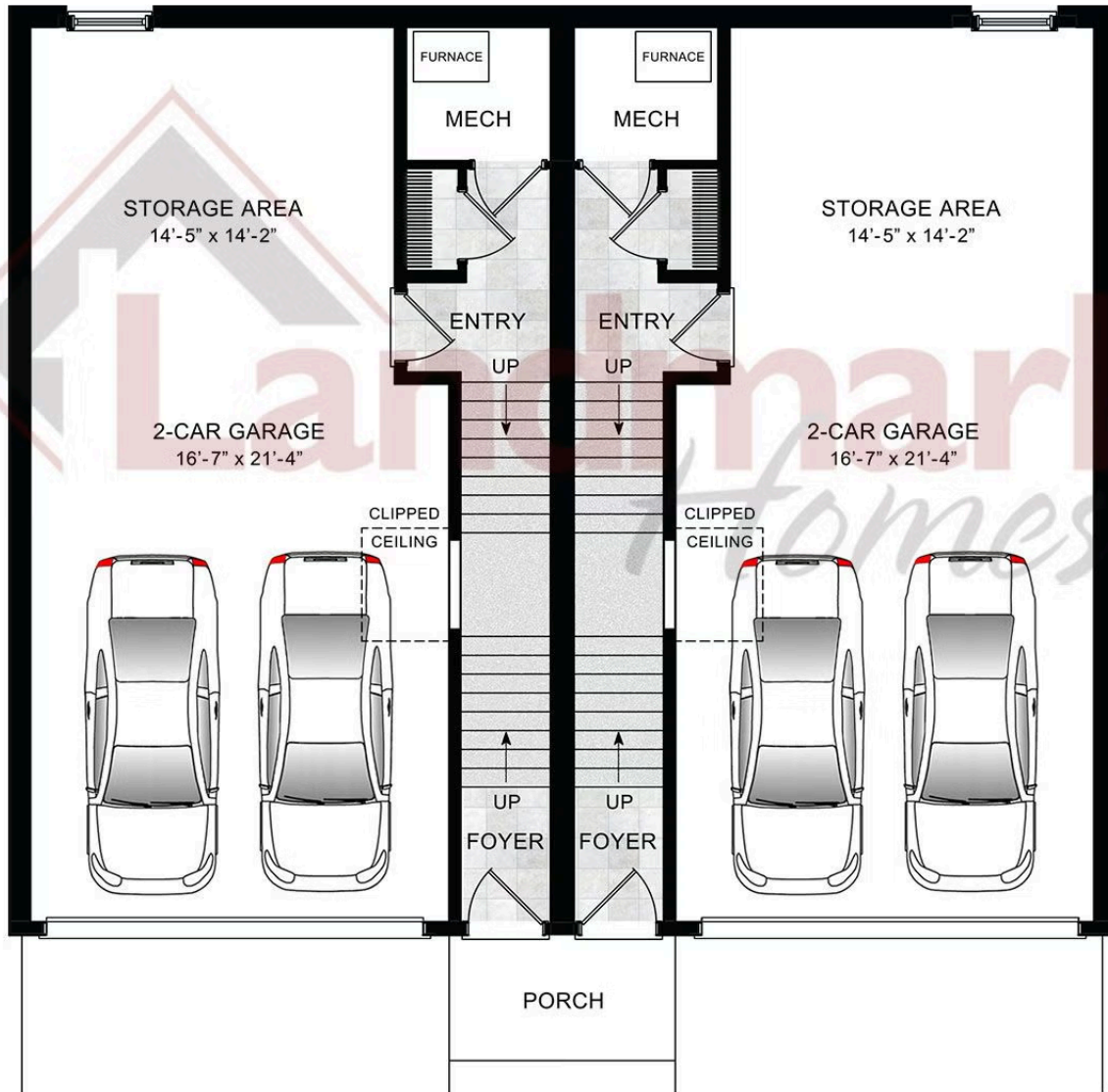
2.5 Bathrooms

1,823 Sq. Ft.

UNDER CONSTRUCTION – AVAILABLE THIS WINTER: This 3-story, end-of-row townhome includes a 2-car garage with a large storage area and a patio for outdoor living. On the main level, the spacious living room opens to the dining area and kitchen. The kitchen features attractive cabinetry, quartz countertops, stainless-steel appliances, and access to the rear patio. The 2nd floor owner's suite includes a private bathroom and an expansive closet. Adjacent to the suite are 2 additional bedrooms, a full bathroom, and a laundry closet.

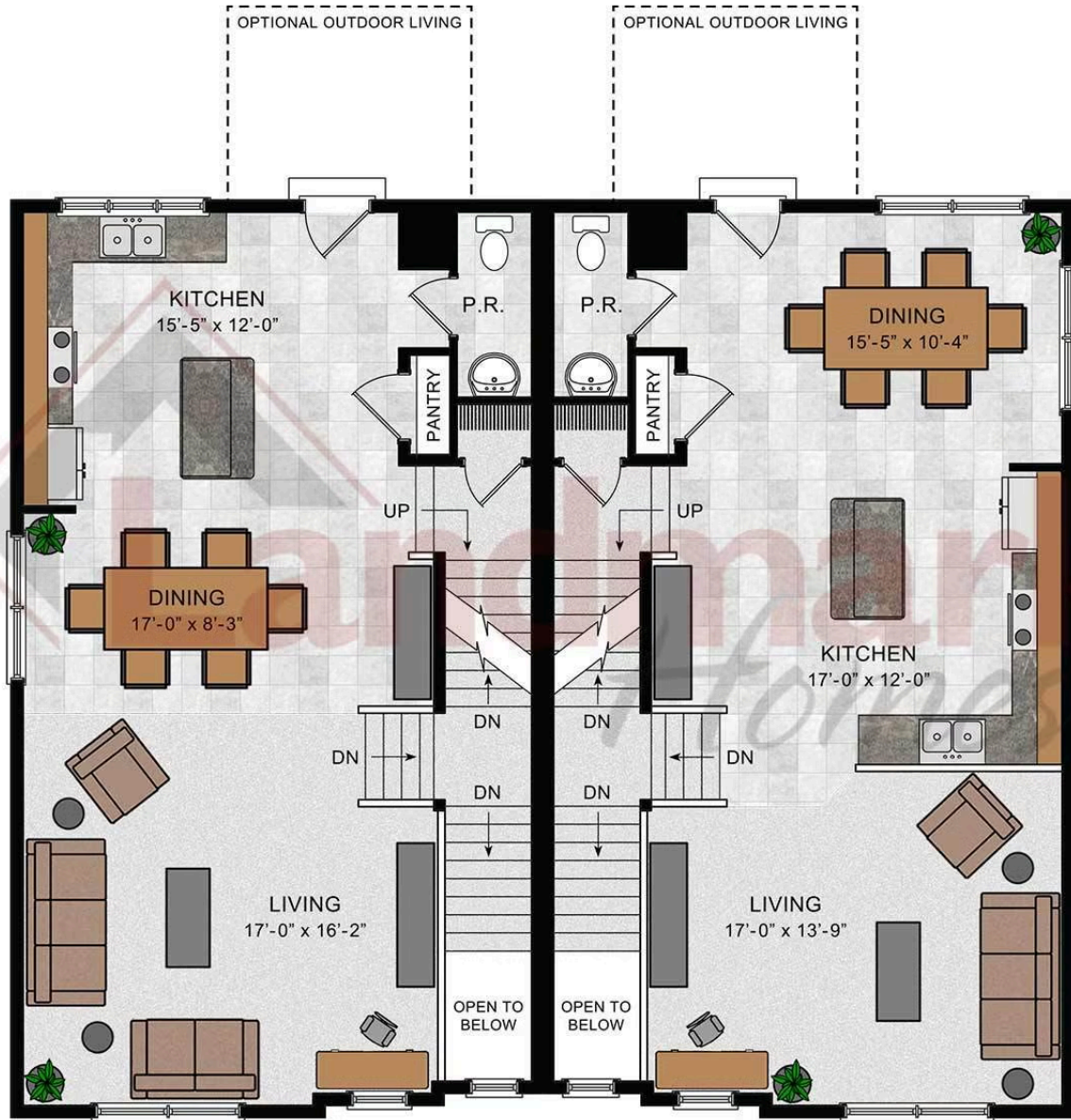


FIRST FLOOR



© 2023 Landmark Builders, Inc. We enforce our intellectual property rights to the fullest extent permitted by applicable law. Elevations and landscaping are artists' conceptions only. Floor plans may vary depending on elevation selected. Actual construction documents take precedence over artwork.

Linden

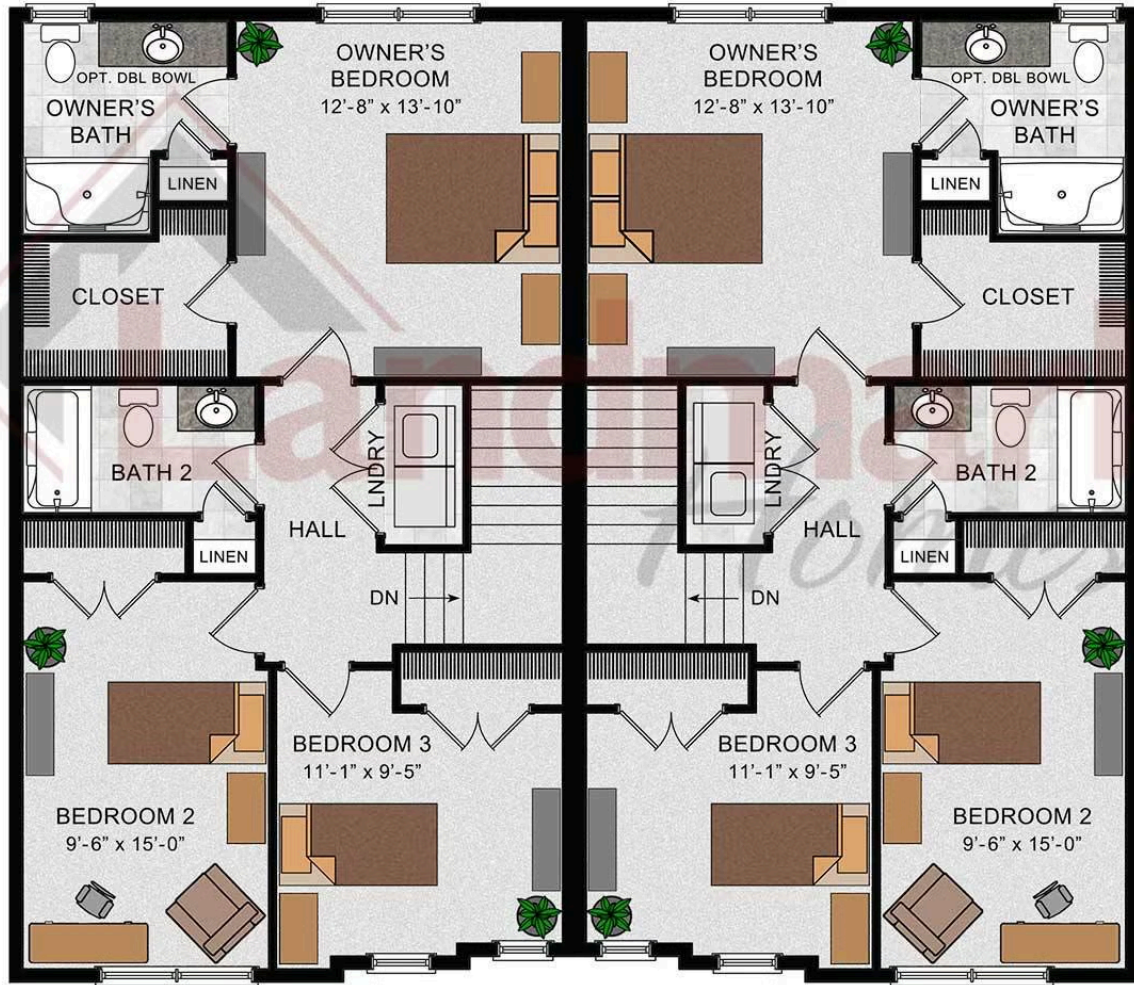


**SECOND FLOOR**

© 2023 Landmark Builders, Inc. We enforce our intellectual property rights to the fullest extent permitted by applicable law. Elevations and landscaping are artists' conceptions only. Floor plans may vary depending on elevation selected. Actual construction documents take precedence over artwork.

Linden

### THIRD FLOOR



© 2023 Landmark Builders, Inc. We enforce our intellectual property rights to the fullest extent permitted by applicable law. Elevations and landscaping are artists' conceptions only. Floor plans may vary depending on elevation selected. Actual construction documents take precedence over artwork.