



Townhome
169 Marissa Court
Newmanstown, PA 17073

COMMUNITY SALES MANAGER

Kristin Larusso

Call/Text 717-419-1611

MOVE-IN READY



Home Priced at
\$389,100

Plan: Easton

3 Bedrooms

2.5 Bathrooms

1,780 Sq. Ft.

This 2-story, end-of-row townhome includes a first-floor owner's suite, a 2-car garage, and durable vinyl plank flooring. The family room, with an ample amount of natural light opens to the rear deck offering stunning views. The kitchen is well-appointed with stainless steel appliances, quartz countertops, and a large center island that opens to the dining area. The owner's suite, tucked quietly to the back of the home, features an expansive closet and a private bathroom. On the 2nd floor, there are two additional bedrooms and a full bathroom.

Document generated 2/22/26



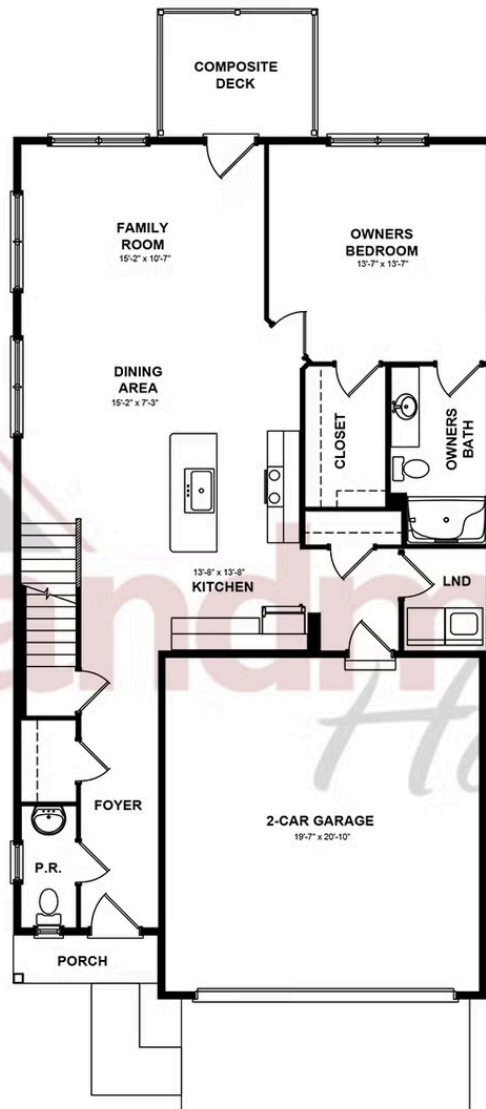


Townhome
169 Marissa Court
Newmanstown, PA 17073

COMMUNITY SALES MANAGER

Kristin Larusso
Call/Text 717-419-1611

FIRST FLOOR



© 2025 Landmark Builders, Inc. We enforce our intellectual property rights to the fullest extent permitted by applicable law. Elevations and landscaping are artists' conceptions only. Floor plans may vary depending on elevation selected. Actual construction documents take precedence over artwork.



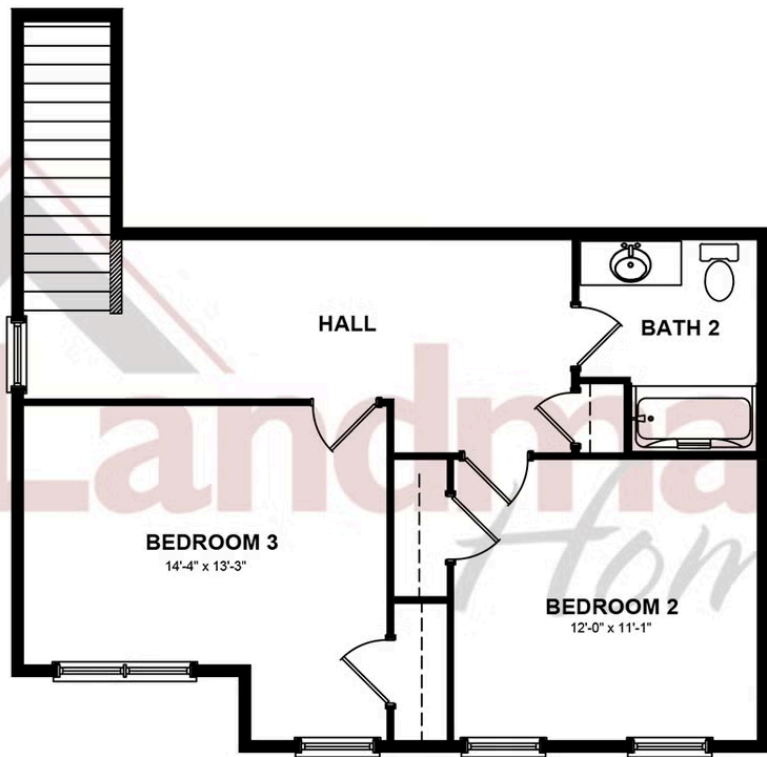


Townhome
169 Marissa Court
Newmanstown, PA 17073

COMMUNITY SALES MANAGER

Kristin Larusso
Call/Text 717-419-1611

SECOND FLOOR



© 2025 Landmark Builders, Inc. We enforce our intellectual property rights to the fullest extent permitted by applicable law. Elevations and landscaping are artists' conceptions only. Floor plans may vary depending on elevation selected. Actual construction documents take precedence over artwork.

Document generated 2/22/26

