



Single Family
Stonecroft
Copper Ridge Single Family

COMMUNITY SALES MANAGER

Kristin Larusso

Call/Text 717-419-1611



Priced From
\$461,000

2 Elevations Available

3 Bedrooms

2 Bathrooms

2,142+ Sq. Ft.

2 Car Garage

The Stonecroft is an upscale home offering one-floor living at its best. The great room makes a grand impression, with lofty windows and optional fireplace, heightened ceiling, and arched entryway. This central area gives easy access to the formal dining room, kitchen, breakfast area and rear patio. The owner's suite, a quiet retreat with plenty of space to relax, features an expansive closet and a large private bath with optional window seat or whirlpool. Two more bedrooms and a full bath are on the other side of the house. The study near the front entry brings in the sunlight with optional French doors and bay window, and can optionally serve as a 4th bedroom; if selecting this option, shared access to the owner's closet can also be selected, making it an ideal shared owner's suite. The Stonecroft Model has four elevations from which to choose. Other options include a full basement and storage above the garage. (Pricing may reflect limited-time savings/incentives. See Community Sales Manager for details.)

Available Elevations



Upgraded Contemporary Elevation



Upgraded B Transitional

Document generated 4/21/26

© 2026 Landmark Builders, Inc. We enforce our intellectual property rights to the fullest extent permitted by applicable law. Elevations and landscaping are artists' conceptions only. Actual construction documents take precedence over artwork. Similar photos shown are for representative purposes only. Details subject to

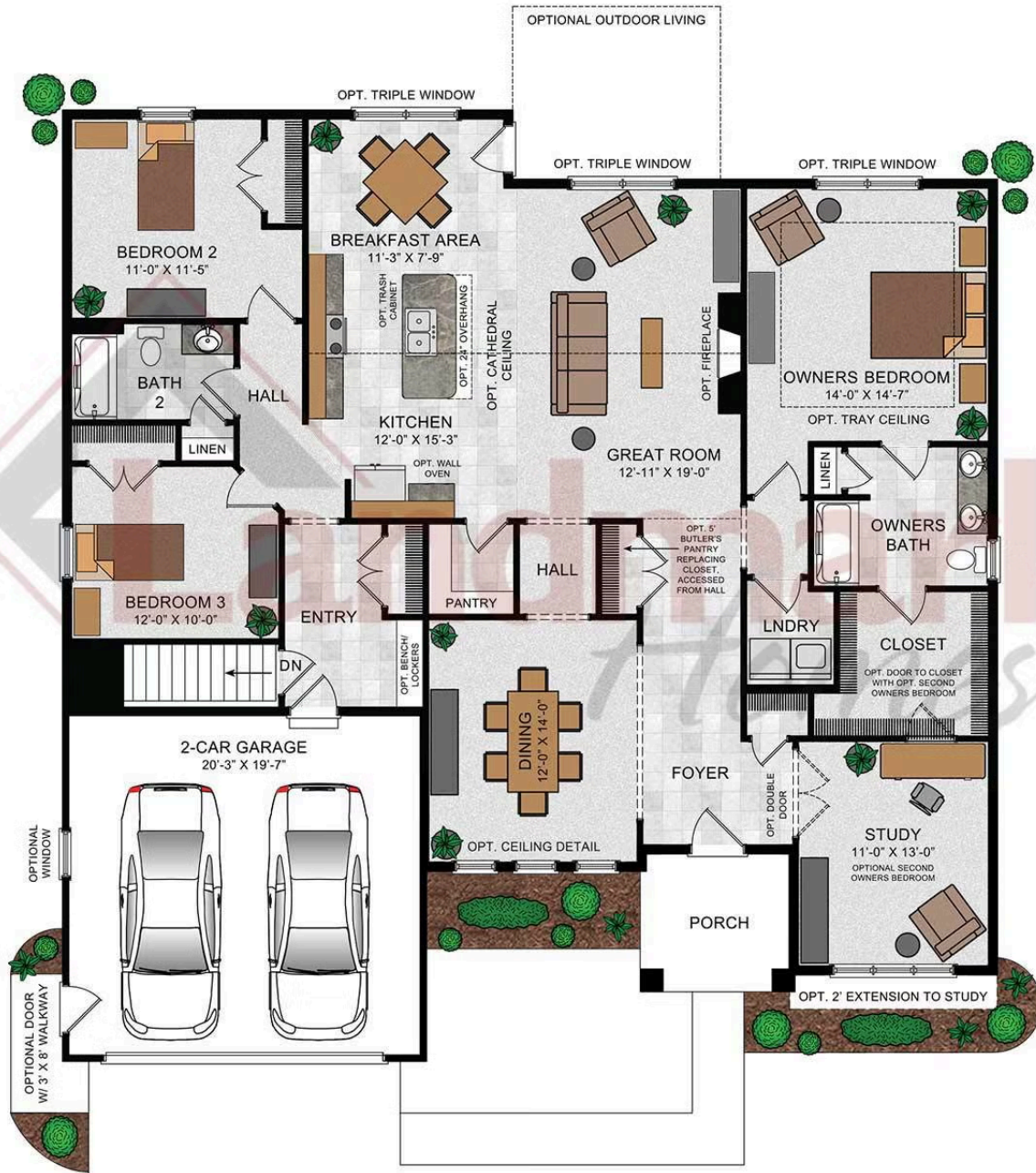




Single Family
Stonecroft
 Copper Ridge Single Family

COMMUNITY SALES MANAGER
 Kristin Larusso
 Call/Text 717-419-1611

Stonecroft



© 2023 Landmark Builders, Inc. We enforce our intellectual property rights to the fullest extent permitted by applicable law. Elevations and landscaping are artists' conceptions only. Floor plans may vary depending on elevation selected. Actual construction documents take precedence over artwork.

© 2026 Landmark Builders, Inc. We enforce our intellectual property rights to the fullest extent permitted by applicable law. Elevations and landscaping are artists' conceptions only. Actual construction documents take precedence over artwork. Similar photos shown are for representative purposes only. Details subject to change without notification. See Community Sales Manager for details.

Document generated 4/21/26

