



Single Family  
**Northfield**  
Copper Ridge Single Family

**COMMUNITY SALES MANAGER**

Kristin Larusso

Call/Text 717-419-1611



**Priced From**  
**\$438,000**

4 Elevations Available

2 Bedrooms

2 Bathrooms

1,839+ Sq. Ft.

2 Car Garage

Ideal first-floor living with private owner's suite tucked away in its own corner of the home. With over 1,800 square feet, 2 bedrooms, and 2 full baths, plus open living areas, this is a perfect home for entertaining guests. The kitchen is open to a spacious family room and the sunny dining area. Off of the 2-car garage is a convenient mudroom entry.

**Available Elevations**



Upgraded Transitional B



Upgraded Traditional A



Upgraded Trademark C



Upgraded Contemporary Elevation





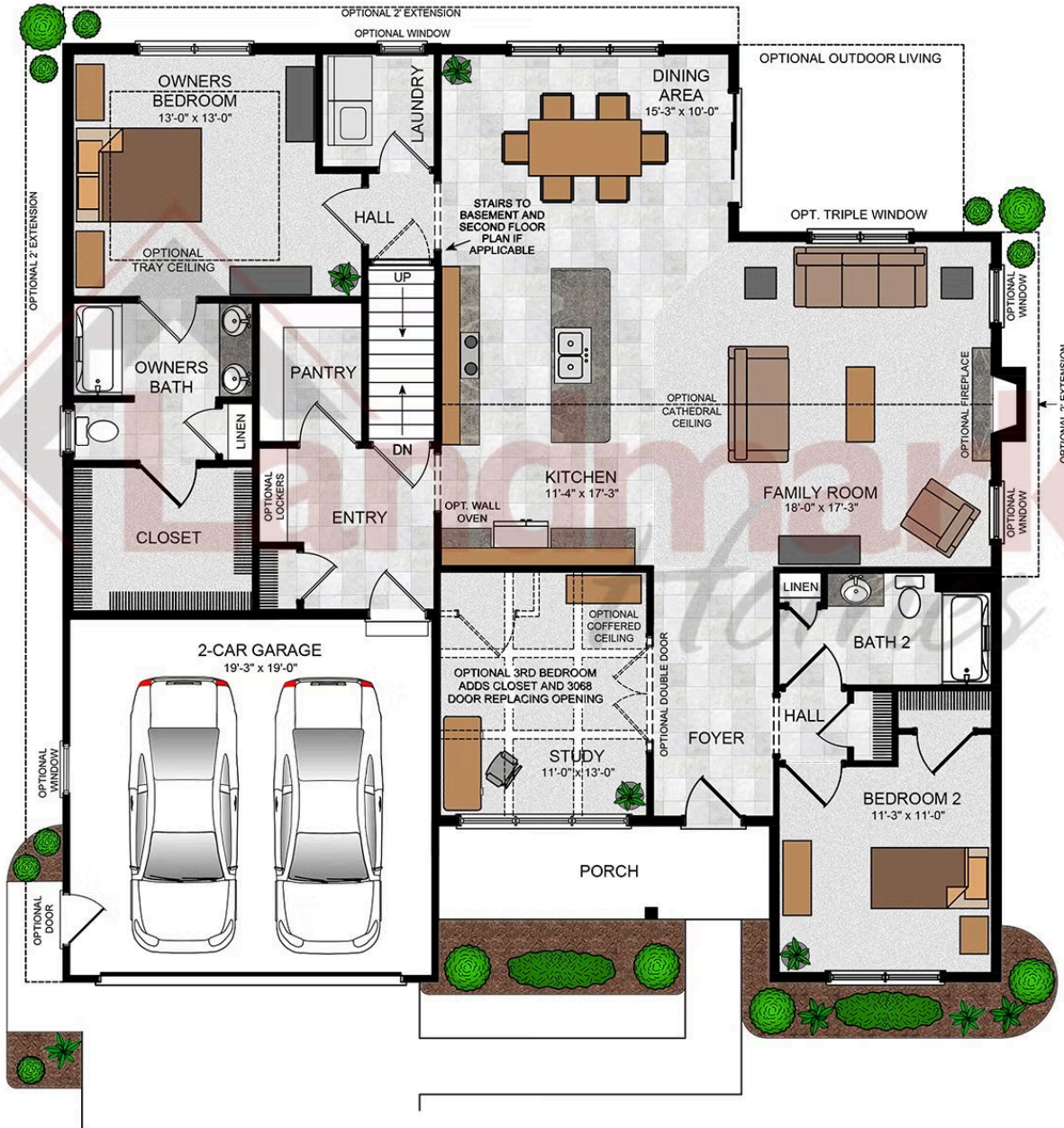
Single Family  
**Northfield**  
Copper Ridge Single Family

COMMUNITY SALES MANAGER

Kristin Larusso

Call/Text 717-419-1611

Northfield



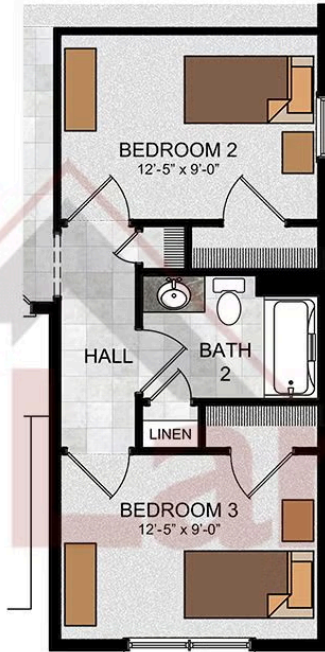
© 2022 Landmark Builders, Inc. We enforce our intellectual property rights to the fullest extent permitted by applicable law. Elevations and landscaping are artists' conceptions only. Floor plans may vary depending on elevation selected. Actual construction documents take precedence over artwork.

Document generated 2/14/26





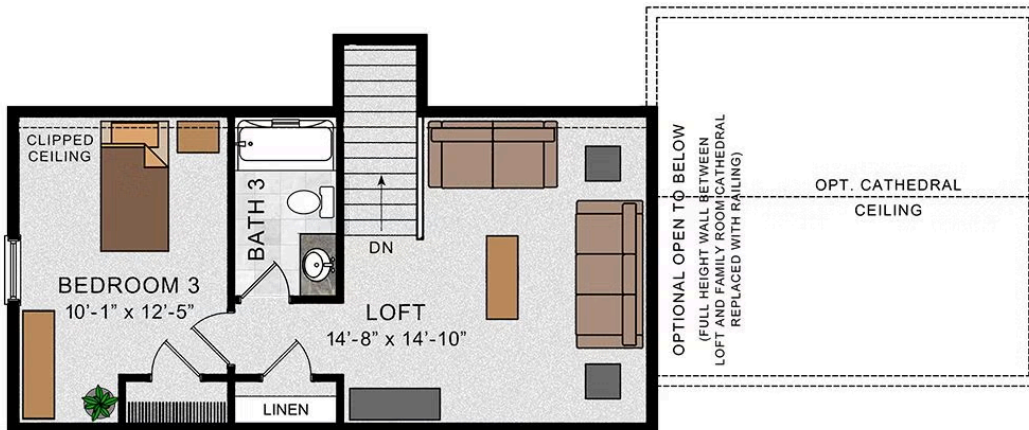
OPTIONAL FIRST FLOOR  
 W/ BEDROOM 3



OPTIONAL SECOND  
 FLOOR LOFT



OPTIONAL SECOND FLOOR PLAN W/  
 3RD BEDROOM AND OPTIONAL LOFT  
 OPEN TO FAMILY ROOM



© 2022 Landmark Builders, Inc. We enforce our intellectual property rights to the fullest extent permitted by applicable law. Elevations and landscaping are artists' conceptions only. Floor plans may vary depending on elevation selected. Actual construction documents take precedence over artwork.