



Single Family
Lawrence
Copper Ridge Single Family

COMMUNITY SALES MANAGER

Kristin Larusso

Call/Text 717-419-1611



Priced From
\$470,200

3 Elevations Available

4 Bedrooms

2.5 Bathrooms

2,276+ Sq. Ft.

2 Car Garage

A welcoming, well-planned family home offering 4 bedrooms, including a spacious owner's suite with a private bath, double bowl vanity, and oversized closet. The 2-car garage includes a separate mudroom entry with optional built-in lockers. On the first floor, the great room is the perfect place to gather as a family, with an optional gas fireplace, and open views of the kitchen and dining room. The kitchen includes a breakfast bar for convenient eat-in seating, and the adjoining dining room provides sliding glass door access to the back yard patio. The flex space room can serve a variety of purposes, such as a study or a formal living room. Convenient 2nd floor laundry area.

Available Elevations



Upgraded Transitional B



Upgraded Traditional A



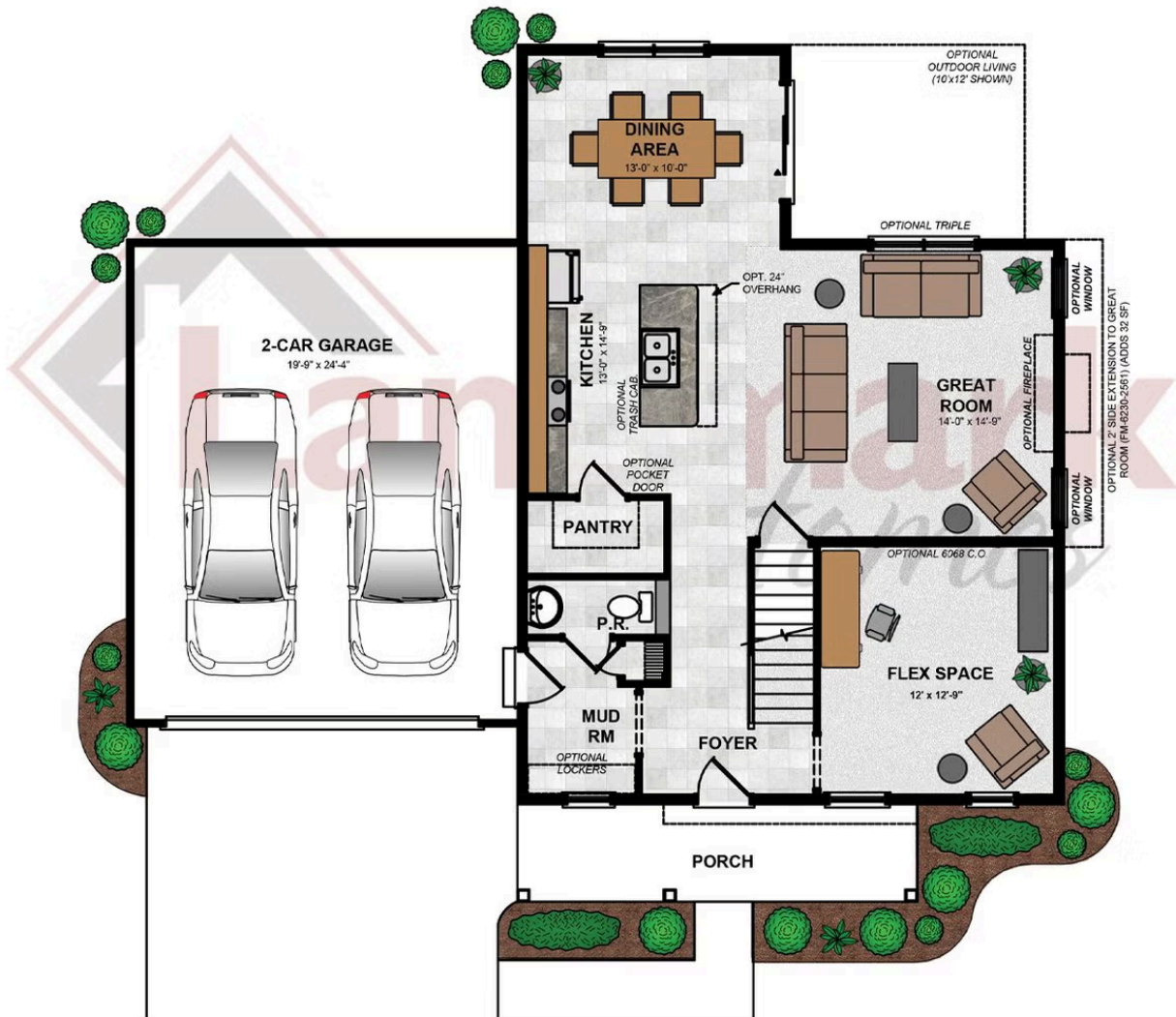
Upgraded Trademark C

Document generated 4/16/26

© 2026 Landmark Builders, Inc. We enforce our intellectual property rights to the fullest extent permitted by applicable law. Elevations and landscaping are artists' conceptions only. Actual construction documents take precedence over artwork. Similar photos shown are for representative purposes only. Details subject to



FIRST FLOOR FRONT LOAD GARAGE

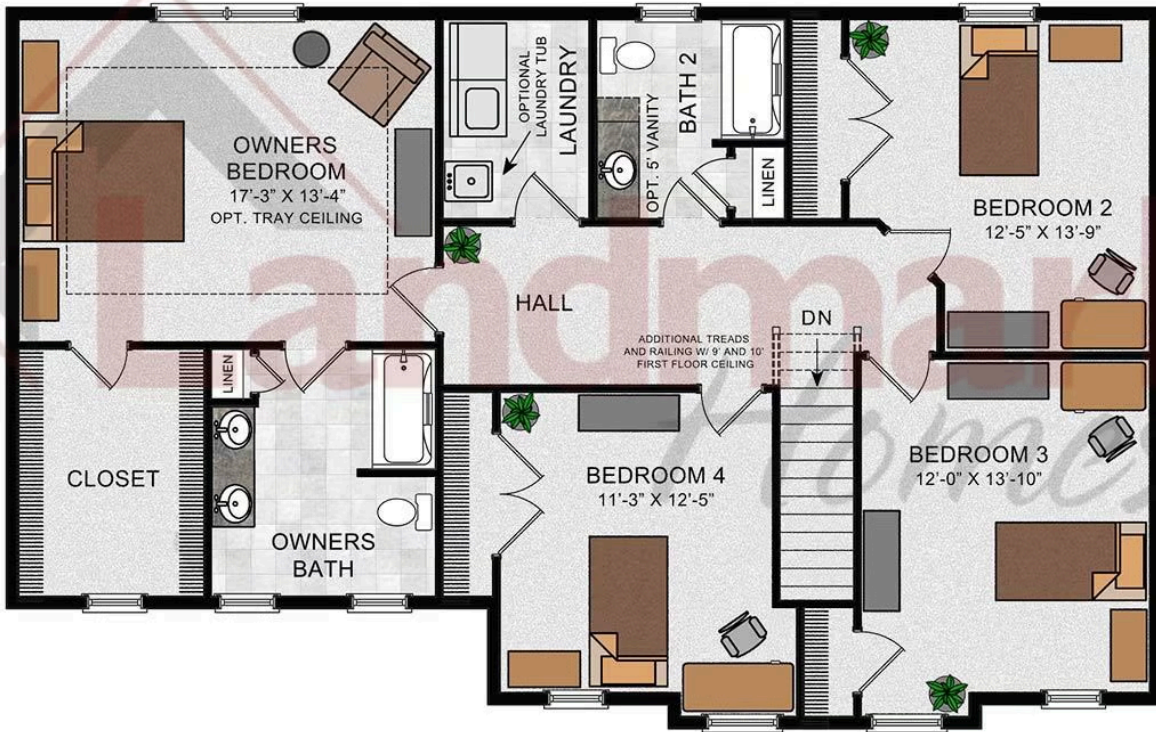


© 2024 Landmark Builders, Inc. We enforce our intellectual property rights to the fullest extent permitted by applicable law. Elevations and landscaping are artists' conceptions only. Floor plans may vary depending on elevation selected. Actual construction documents take precedence over artwork.

© 2026 Landmark Builders, Inc. We enforce our intellectual property rights to the fullest extent permitted by applicable law. Elevations and landscaping are artists' conceptions only. Actual construction documents take precedence over artwork. Similar photos shown are for representative purposes only. Details subject to change without notification. See Community Sales Manager for details.

Document generated 4/16/26

SECOND FLOOR

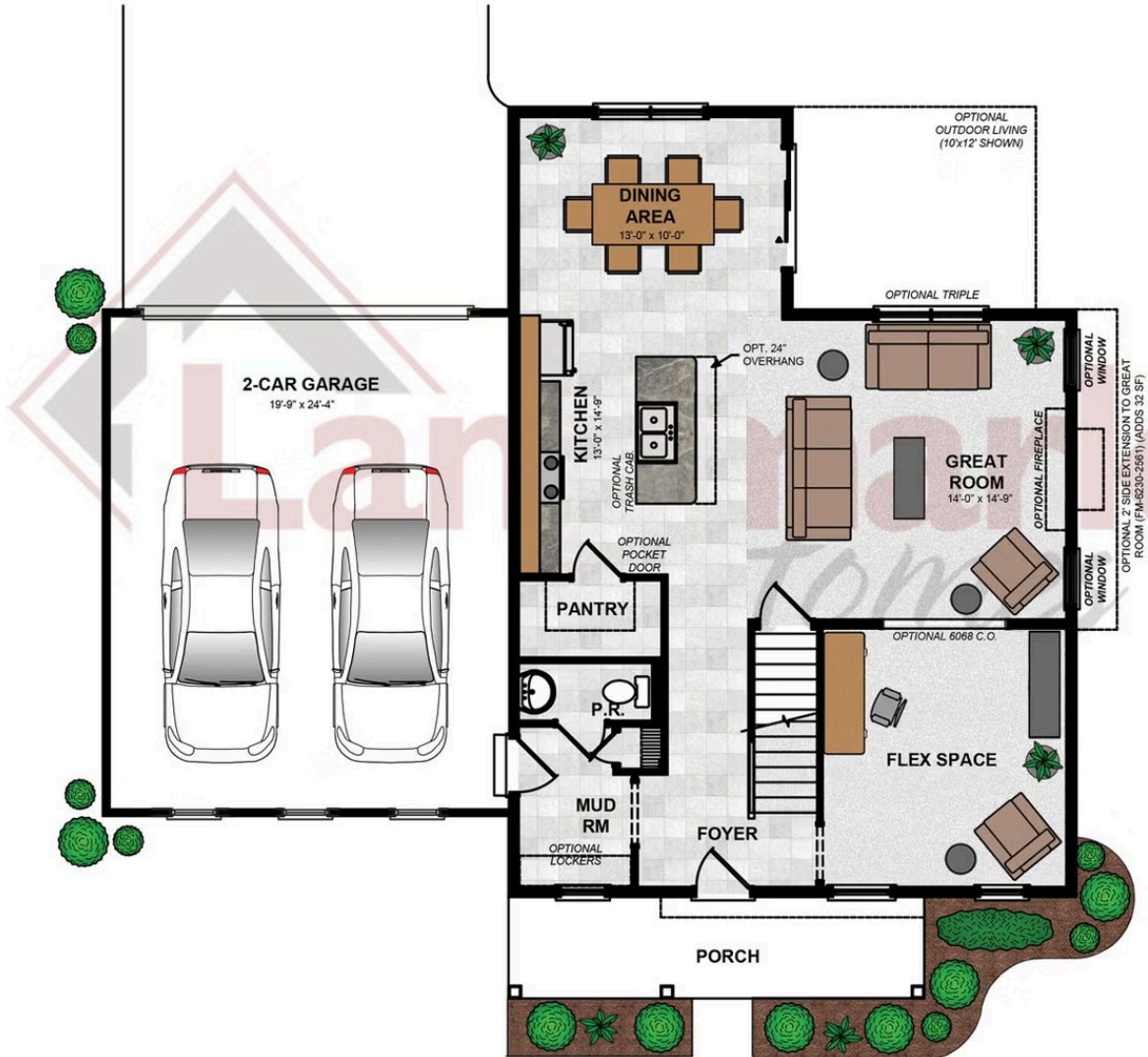


© 2022 Landmark Builders, Inc. We enforce our intellectual property rights to the fullest extent permitted by applicable law. Elevations and landscaping are artists' conceptions only. Floor plans may vary depending on elevation selected. Actual construction documents take precedence over artwork.

© 2026 Landmark Builders, Inc. We enforce our intellectual property rights to the fullest extent permitted by applicable law. Elevations and landscaping are artists' conceptions only. Actual construction documents take precedence over artwork. Similar photos shown are for representative purposes only. Details subject to change without notification. See Community Sales Manager for details.

Document generated 4/16/26

FIRST FLOOR ALLEY LOAD GARAGE



© 2024 Landmark Builders, Inc. We enforce our intellectual property rights to the fullest extent permitted by applicable law. Elevations and landscaping are artists' conceptions only. Floor plans may vary depending on elevation selected. Actual construction documents take precedence over artwork.

© 2026 Landmark Builders, Inc. We enforce our intellectual property rights to the fullest extent permitted by applicable law. Elevations and landscaping are artists' conceptions only. Actual construction documents take precedence over artwork. Similar photos shown are for representative purposes only. Details subject to change without notification. See Community Sales Manager for details.

Document generated 4/16/26



Single Family
Lawrence
Copper Ridge Single Family

COMMUNITY SALES MANAGER

Kristin Larusso
Call/Text 717-419-1611

© 2026 Landmark Builders, Inc. We enforce our intellectual property rights to the fullest extent permitted by applicable law. Elevations and landscaping are artists' conceptions only. Actual construction documents take precedence over artwork. Similar photos shown are for representative purposes only. Details subject to change without notification. See Community Sales Manager for details.

Document generated 4/16/26

