



Single Family

221 Copper Ridge Drive

Newmanstown, PA 17073

COMMUNITY SALES MANAGER

Kristin Larusso

Call/Text 717-419-1611

MOVE-IN READY



Home Priced at

\$694,700

Plan: Kingston

Elevation: Representative Exterior

5 Bedrooms

3.0 Bathrooms

3,024 Sq. Ft.

This stately 2-story home with an inviting front porch has a 2-car garage and 9' ceilings in the basement and on the first floor. The mudroom entry from the garage features a spacious pantry and built-in craftsman bench seat with coat hooks above. Stylish vinyl plank flooring flows throughout the main living areas. To the front of the home, the foyer is flanked by a dining room, accented by wood beams on the ceiling, and a cozy study with a craftsman style accent wall. The kitchen is well-appointed with quartz countertops, a tile backsplash, enhanced cabinetry and appliances, and a large center island. Adjacent to the kitchen, a sunny breakfast area opens to a composite deck, perfect for entertaining guests and outdoor relaxation. The 2-story great room creates a grand impression with a floor-to ceiling stone fireplace. A guest bedroom and full bathroom complete the first floor. On the second floor, the owner's suite includes a private bathroom with a double bowl vanity, tile shower, freestanding tub, and an expansive closet. Down the hall is a convenient laundry room, 3 additional bedrooms and a full bathroom.

Document generated 1/5/26





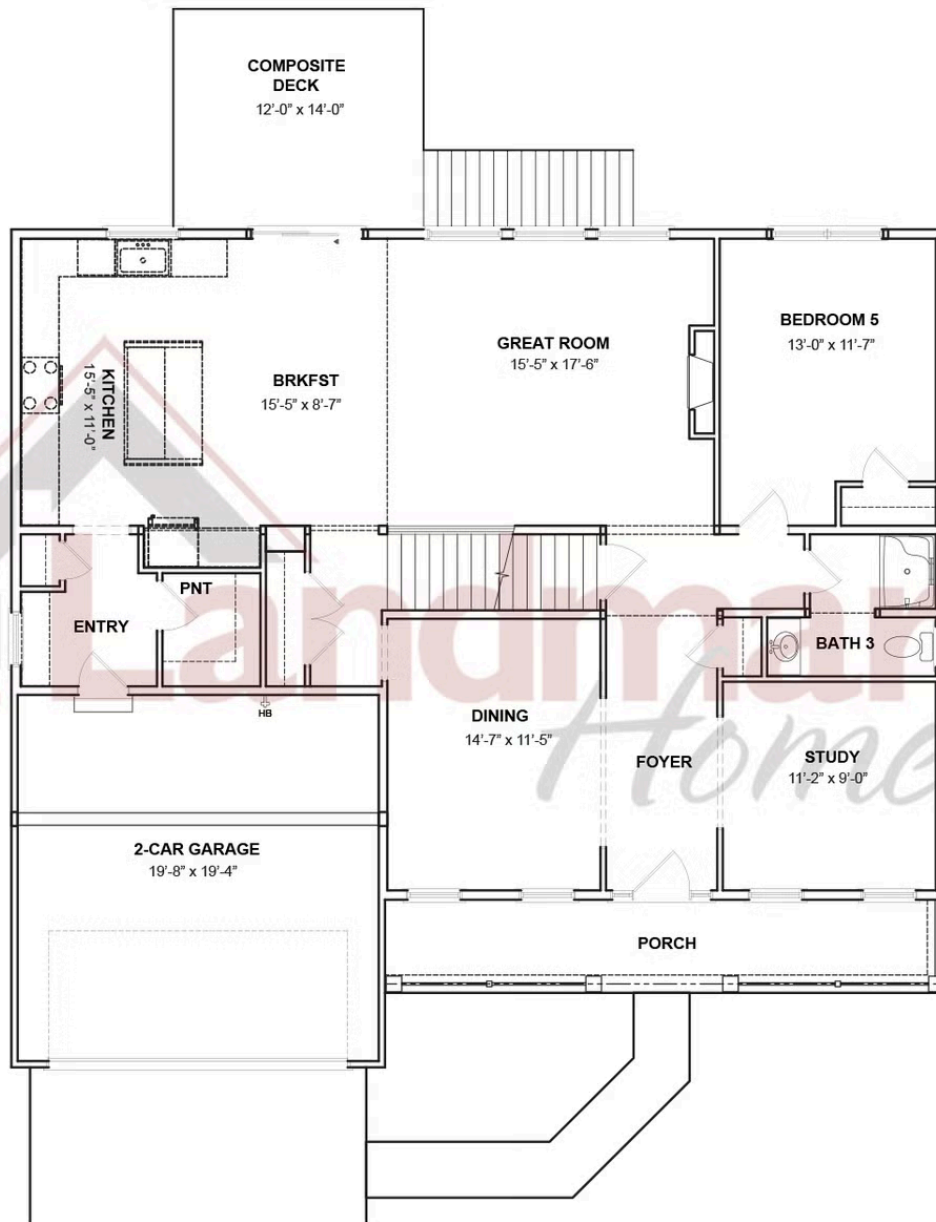
Single Family
221 Copper Ridge Drive
Newmanstown, PA 17073

COMMUNITY SALES MANAGER

Kristin Larusso

Call/Text 717-419-1611

FIRST FLOOR



© 2025 Landmark Builders, Inc. We enforce our intellectual property rights to the fullest extent permitted by applicable law. Elevations and landscaping are artists' conceptions only. Floor plans may vary depending on elevation selected. Actual construction documents take precedence over artwork.





Single Family

221 Copper Ridge Drive

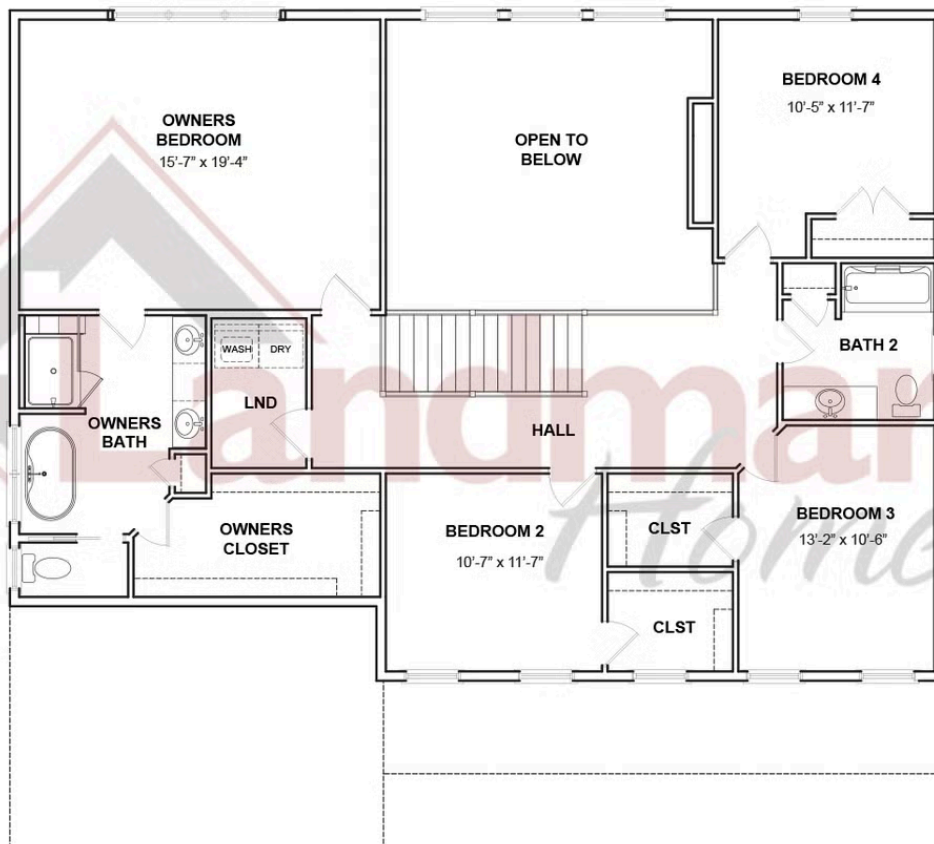
Newmanstown, PA 17073

COMMUNITY SALES MANAGER

Kristin Larusso

Call/Text 717-419-1611

SECOND FLOOR



© 2025 Landmark Builders, Inc. We enforce our intellectual property rights to the fullest extent permitted by applicable law. Elevations and landscaping are artists' conceptions only. Floor plans may vary depending on elevation selected. Actual construction documents take precedence over artwork.

