



Single Family
Hunter
 Copper Ridge Single Family

COMMUNITY SALES MANAGER
 Kristin Larusso
 Call/Text 717-419-1611



Priced From
\$490,800

4 Elevations Available

3 Bedrooms

2.5 Bathrooms

2,351+ Sq. Ft.

2 Car Garage

One of our most popular models and for good reason! This house has curb appeal and it doesn't stop with the exterior. Interior is well-appointed with a first-floor owner's suite, vaulted great room that flows into an eat-in kitchen with generous pantry, cabinets, and counter space. Formal dining room and study flank a traditional foyer with view of the 2-story great room.

Available Elevations



Upgraded Traditional A



Upgraded Transitional B



Upgraded Trademark C



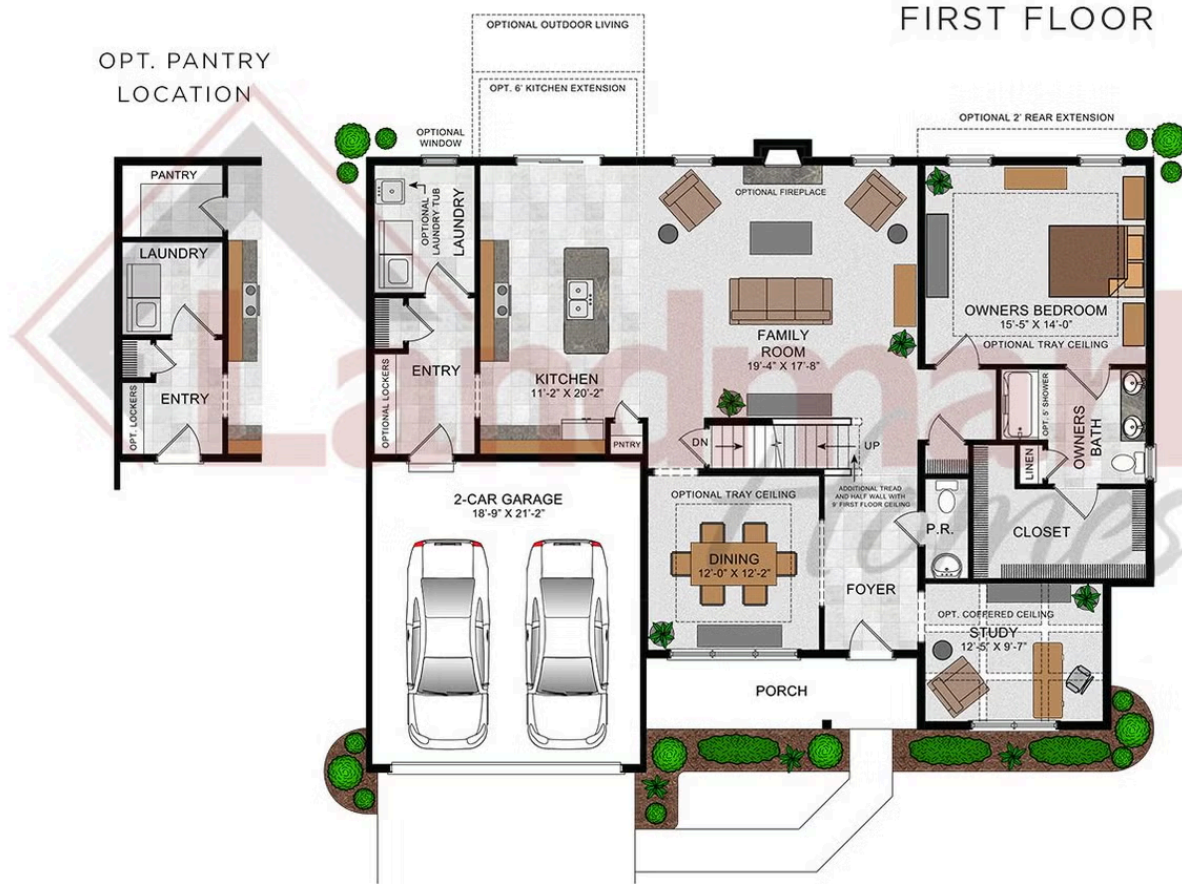
Upgraded Contemporary Elevation

Document generated 4/15/26

© 2026 Landmark Builders, Inc. We enforce our intellectual property rights to the fullest extent permitted by applicable law. Elevations and landscaping are artists' conceptions only. Actual construction documents take precedence over artwork. Similar photos shown are for representative purposes only. Details subject to



Hunter



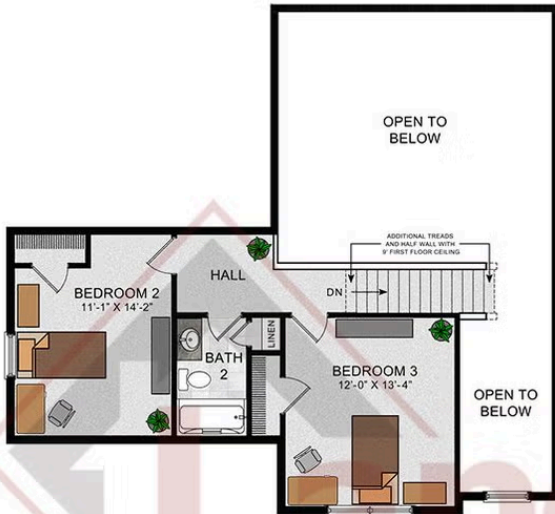
© 2022 Landmark Builders, Inc. We enforce our intellectual property rights to the fullest extent permitted by applicable law. Elevations and landscaping are artists' conceptions only. Floor plans may vary depending on elevation selected. Actual construction documents take precedence over artwork.

© 2026 Landmark Builders, Inc. We enforce our intellectual property rights to the fullest extent permitted by applicable law. Elevations and landscaping are artists' conceptions only. Actual construction documents take precedence over artwork. Similar photos shown are for representative purposes only. Details subject to change without notification. See Community Sales Manager for details.

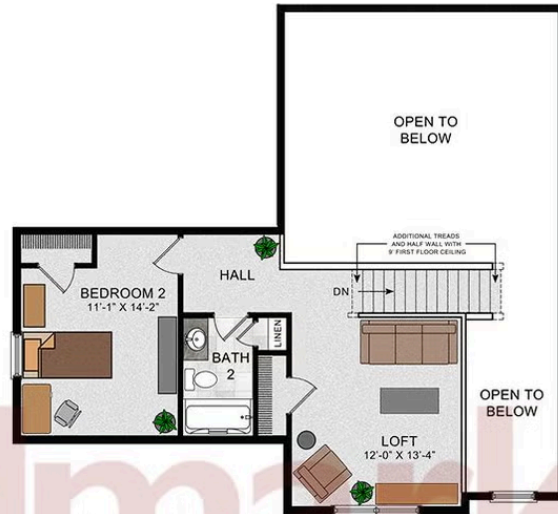
Document generated 4/15/26

Hunter

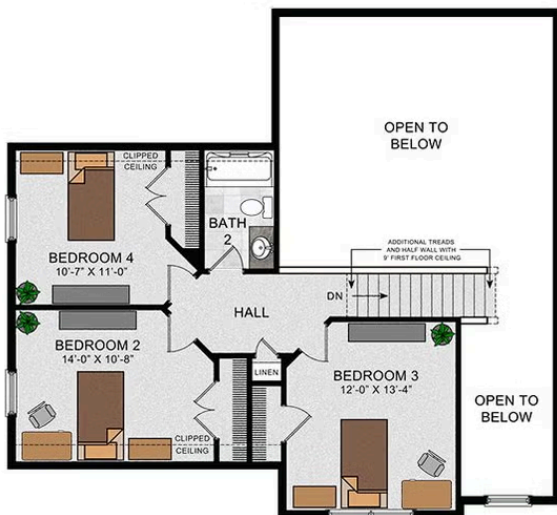
SECOND FLOOR



OPT. SECOND FLOOR
 W/ LOFT



OPT. SECOND FLOOR
 W/ BEDROOM 4



OPT. SECOND FLOOR
 W/ LOFT AND BEDROOM 2 AND 3



© 2022 Landmark Builders, Inc. We enforce our intellectual property rights to the fullest extent permitted by applicable law. Elevations and landscaping are artists' conceptions only. Floor plans may vary depending on elevation selected. Actual construction documents take precedence over artwork.

© 2026 Landmark Builders, Inc. We enforce our intellectual property rights to the fullest extent permitted by applicable law. Elevations and landscaping are artists' conceptions only. Actual construction documents take precedence over artwork. Similar photos shown are for representative purposes only. Details subject to change without notification. See Community Sales Manager for details.

Document generated 4/15/26