



Single Family  
**Norton**

Wright's Landing at Legacy Park

**COMMUNITY SALES MANAGER**

Randy Brewbaker

Call/Text 717-587-1469



Priced From  
**\$468,800**

2 Elevations Available

2 Bedrooms

2 Bathrooms

1,672+ Sq. Ft.

2 Car Garage

This one-story home features 2 bedrooms and 2 full baths with optional flex space to be used for either a study or a third bedroom. The kitchen is oversized, offering plenty of counter space and storage. The open floor plan includes a great room with an optional fireplace and a dining room, both of which are open to the kitchen. The private owner's suite features a bedroom with optional tray ceiling, an oversized closet, and a private bathroom conveniently located adjacent to the laundry room. (Pricing may reflect limited-time savings/incentives. See Community Sales Manager for details.)

**Available Elevations**



Upgraded Transitional B

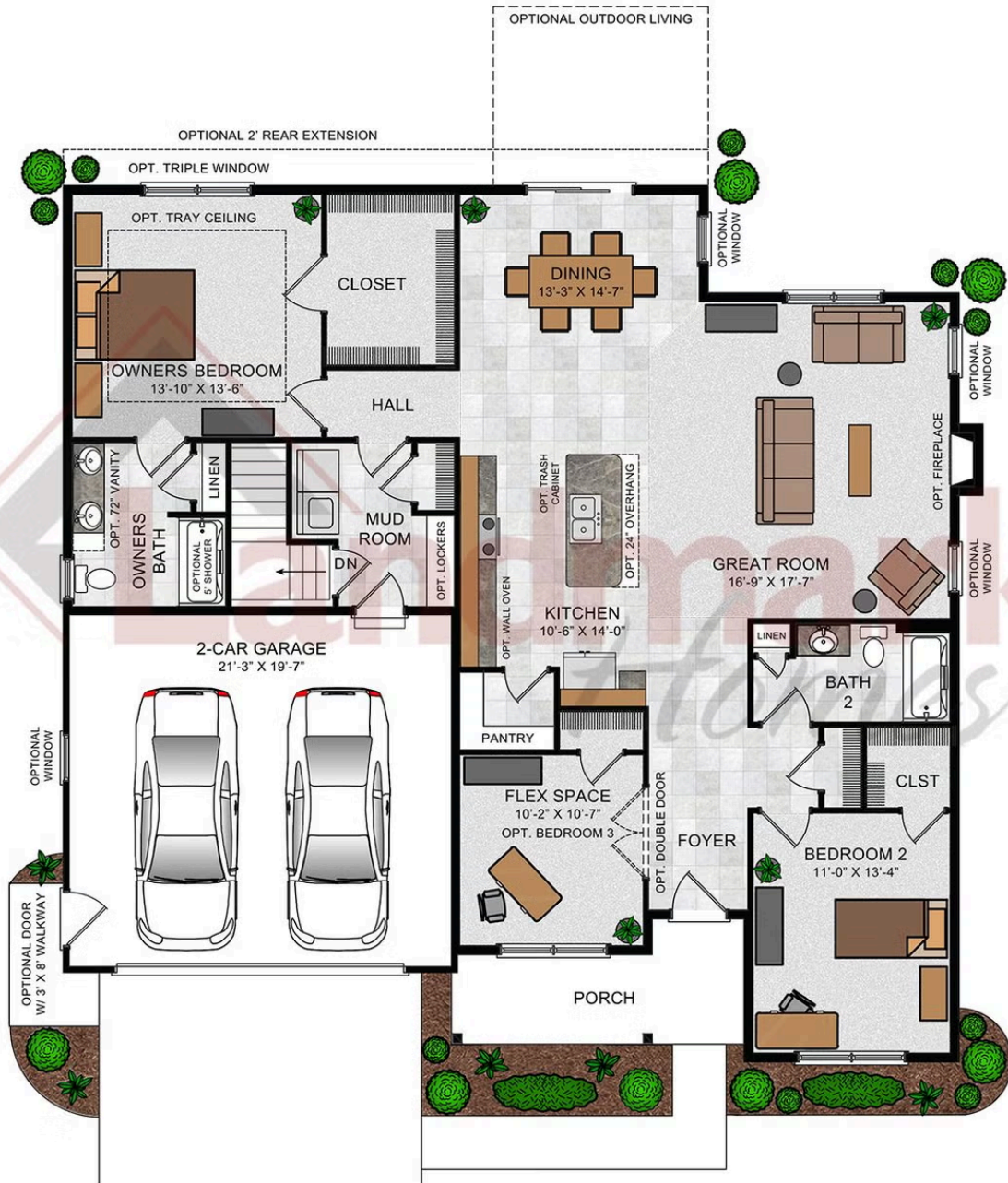


Upgraded Traditional A

Document generated 4/26/26

© 2026 Landmark Builders, Inc. We enforce our intellectual property rights to the fullest extent permitted by applicable law. Elevations and landscaping are artists' conceptions only. Actual construction documents take precedence over artwork. Similar photos shown are for representative purposes only. Details subject to





© 2022 Landmark Builders, Inc. We enforce our intellectual property rights to the fullest extent permitted by applicable law. Elevations and landscaping are artists' conceptions only. Floor plans may vary depending on elevation selected. Actual construction documents take precedence over artwork.

© 2026 Landmark Builders, Inc. We enforce our intellectual property rights to the fullest extent permitted by applicable law. Elevations and landscaping are artists' conceptions only. Actual construction documents take precedence over artwork. Similar photos shown are for representative purposes only. Details subject to change without notification. See Community Sales Manager for details.