



Single Family

519 Charleston Drive

Mechanicsburg, PA 17055

COMMUNITY SALES MANAGER

Randy Brewbaker

Call/Text 717-587-1469

UNDER CONSTRUCTION



Home Priced at

\$572,700

Plan: Grayson

Elevation: Grayson Exterior

4 Bedrooms

2.5 Bathrooms

2,457 Sq. Ft.

UNDER CONSTRUCTION – AVAILABLE THIS SPRING: Charming 2-story home with a 2-car, rear-load garage and a mudroom entry complete with built in lockers, perfect for storage. The first floor is complete with stylish vinyl plank flooring and 9' ceilings. Upon entry is the family room warmed by a gas fireplace with stone surround and a flex space that can be used as an office or den. The kitchen features enhanced appliances and cabinetry, quartz countertops with a tile backsplash, a large pantry and beautiful island for entertaining guests. The ample dining area opens to a patio through sliding glass doors. On the 2nd floor, the spacious owner's suite with a cathedral ceiling features an expansive closet and a private bath with double bowl vanity, tile shower, and built-in bench. Adjacent to the suite are 3 additional bedrooms, a full bathroom, and a convenient laundry room.

Document generated 2/6/26



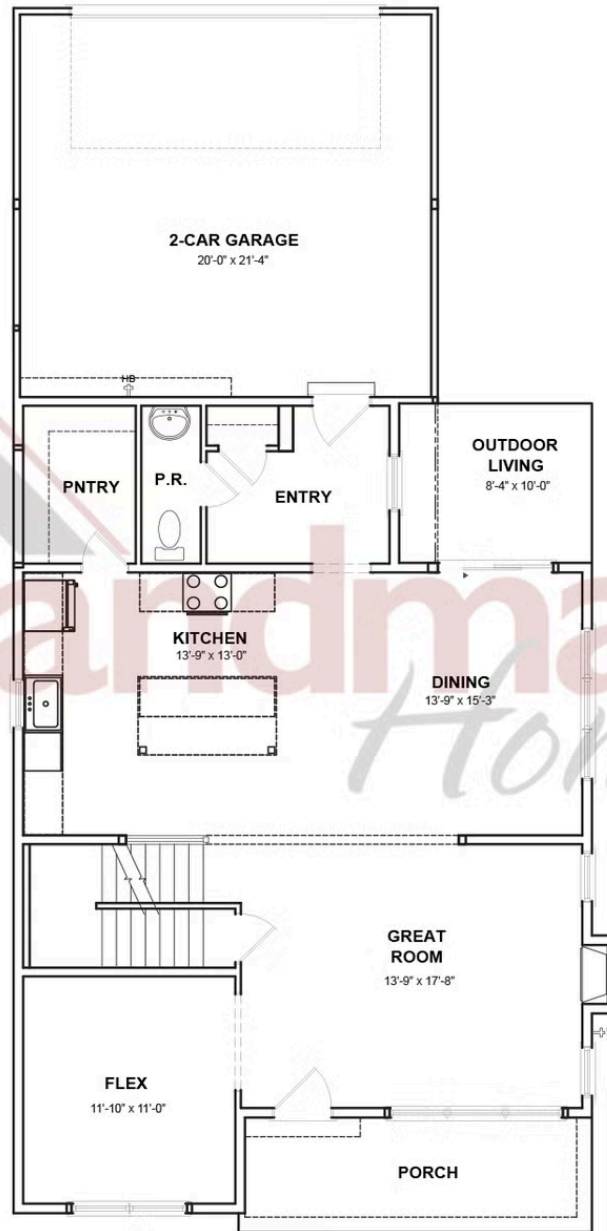


Single Family
519 Charleston Drive
Mechanicsburg, PA 17055

COMMUNITY SALES MANAGER

Randy Brewbaker
Call/Text 717-587-1469

FIRST FLOOR



© 2026 Landmark Builders, Inc. We enforce our intellectual property rights to the fullest extent permitted by applicable law. Elevations and landscaping are artists' conceptions only. Floor plans may vary depending on elevation selected. Actual construction documents take precedence over artwork.



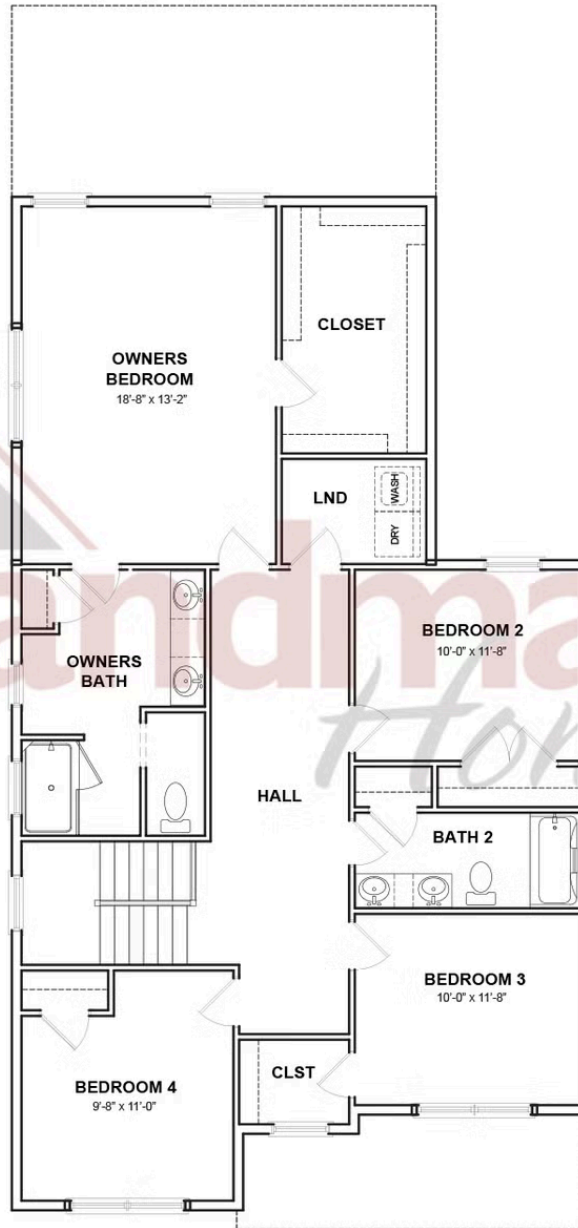


Single Family
519 Charleston Drive
Mechanicsburg, PA 17055

COMMUNITY SALES MANAGER

Randy Brewbaker
Call/Text 717-587-1469

SECOND FLOOR



© 2026 Landmark Builders, Inc. We enforce our intellectual property rights to the fullest extent permitted by applicable law. Elevations and landscaping are artists' conceptions only. Floor plans may vary depending on elevation selected. Actual construction documents take precedence over artwork.

