



Single Family

Fulton

Wright's Landing at Legacy Park

COMMUNITY SALES MANAGER

Randy Brewbaker

Call/Text 717-587-1469



Priced From

\$511,600

3 Elevations Available

3 Bedrooms

2.5 Bathrooms

2,144+ Sq. Ft.

2 Car Garage

With just over 2,100 square feet, a 2-car garage, and an open floor plan, this home offers both convenience and modern living. The foyer leads to the open living spaces of the first floor, with a living room, dining area, and kitchen, with access to optional outdoor living. Expand the mudroom to add an office. The second floor features 3 bedrooms, including an owner's suite with private bathroom and large closet, a secondary bathroom, and a convenient laundry area. Optionally, expand the second floor of the home to add a spacious 4th bedroom or bonus room.

Available Elevations



Upgraded B Transitional



Upgraded C1 Trademark



Upgraded C2 Trademark





Single Family
Fulton

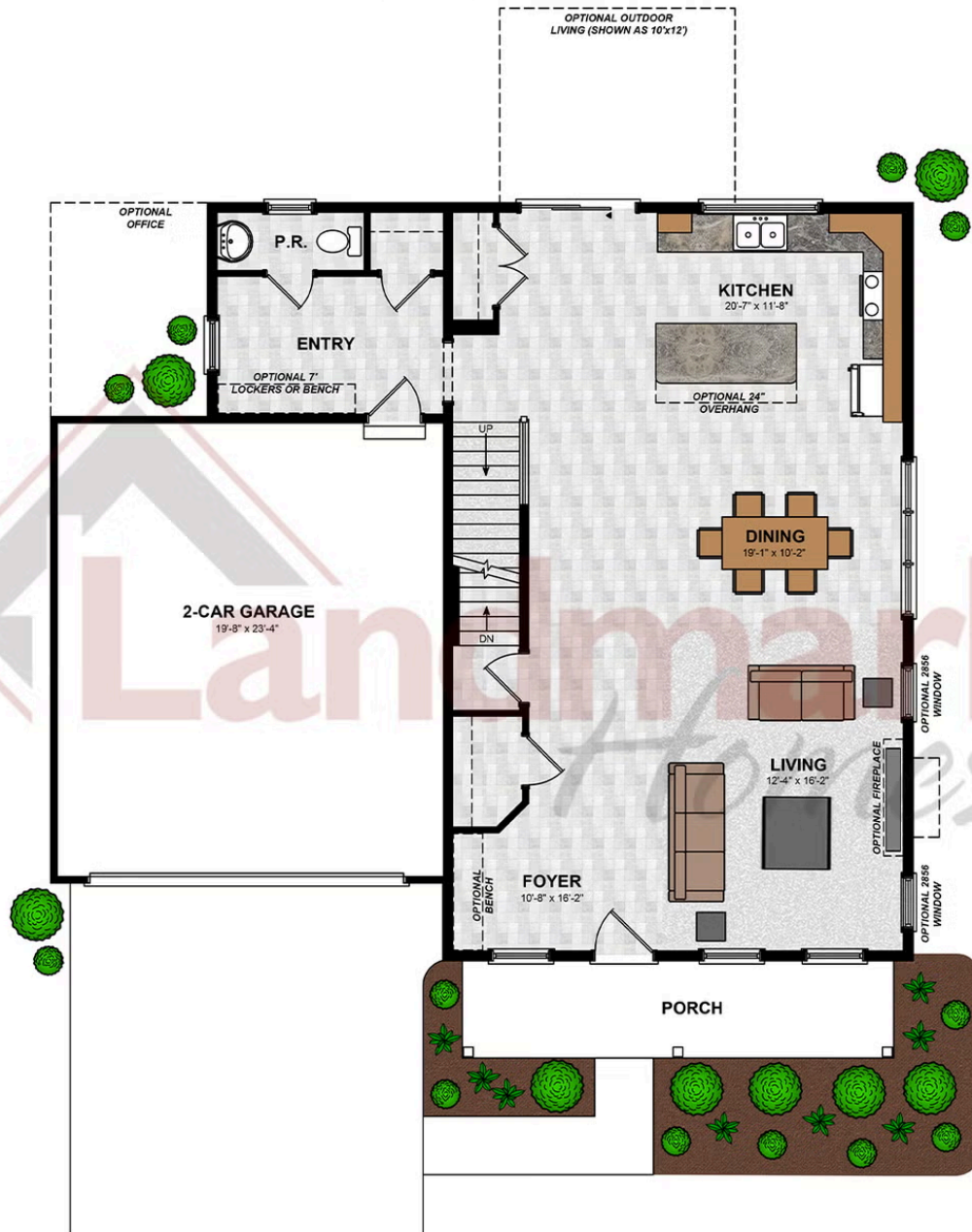
Wright's Landing at Legacy Park

COMMUNITY SALES MANAGER

Randy Brewbaker

Call/Text 717-587-1469

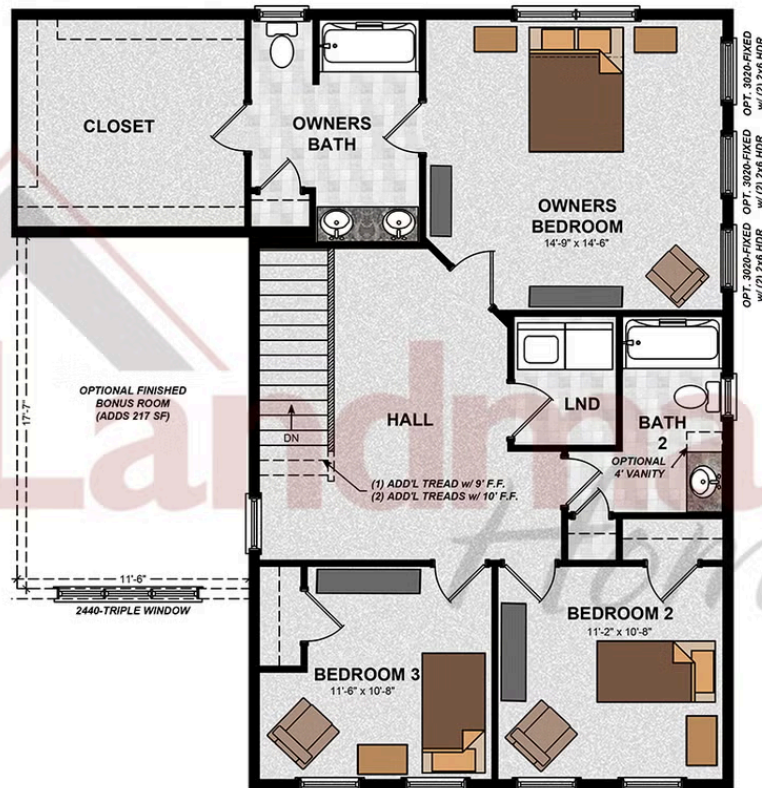
FIRST FLOOR



© 2025 Landmark Builders, Inc. We enforce our intellectual property rights to the fullest extent permitted by applicable law. Elevations and landscaping are artists' conceptions only. Floor plans may vary depending on elevation selected. Actual construction documents take precedence over artwork.



SECOND FLOOR



© 2025 Landmark Builders, Inc. We enforce our intellectual property rights to the fullest extent permitted by applicable law. Elevations and landscaping are artists' conceptions only. Floor plans may vary depending on elevation selected. Actual construction documents take precedence over artwork.