



Single Family  
**610 Estate Drive**  
Mechanicsburg, PA 17055

**COMMUNITY SALES MANAGER**

Randy Brewbaker

Call/Text 717-587-1469

**MOVE-IN READY**



Home Priced at  
**\$569,900**

Plan: Darien

4 Bedrooms

2.5 Bathrooms

2,696 Sq. Ft.

This beautiful home with a welcoming front porch includes a 2-car garage with a large mudroom entry. The first floor boasts 9' ceilings and stylish vinyl plank flooring in the main living areas. To the front of the home is a convenient, carpeted flex room that can be used as a study, living room, or other versatile space. The kitchen is well-appointed with quartz countertops, a tile backsplash, stainless-steel appliances, and a spacious pantry. The sunny dining area provides access to a rear patio. Open to the kitchen, the comfortable family room is warmed by a gas fireplace with a stone surround. The 2nd floor owner's suite features an expansive closet and a private bathroom with a tile shower and double bowl vanity. Adjacent to the suite are 3 additional bedrooms, a full bathroom, spacious rec room, and a convenient laundry room.

Document generated 2/22/26





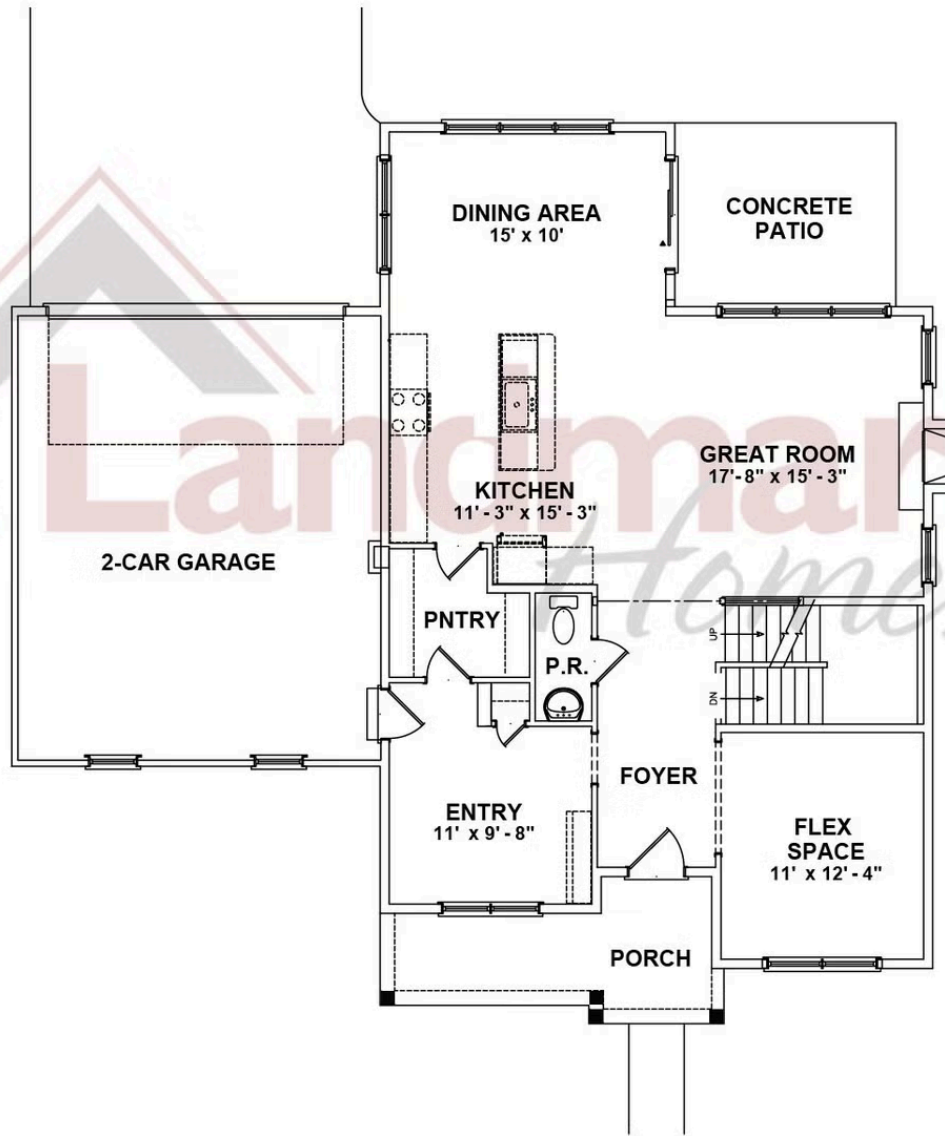
Single Family  
**610 Estate Drive**  
Mechanicsburg, PA 17055

**COMMUNITY SALES MANAGER**

Randy Brewbaker

Call/Text 717-587-1469

## FIRST FLOOR



© 2024 Landmark Builders, Inc. We enforce our intellectual property rights to the fullest extent permitted by applicable law. Elevations and landscaping are artists' conceptions only. Floor plans may vary depending on elevation selected. Actual construction documents take precedence over artwork.

Document generated 2/22/26



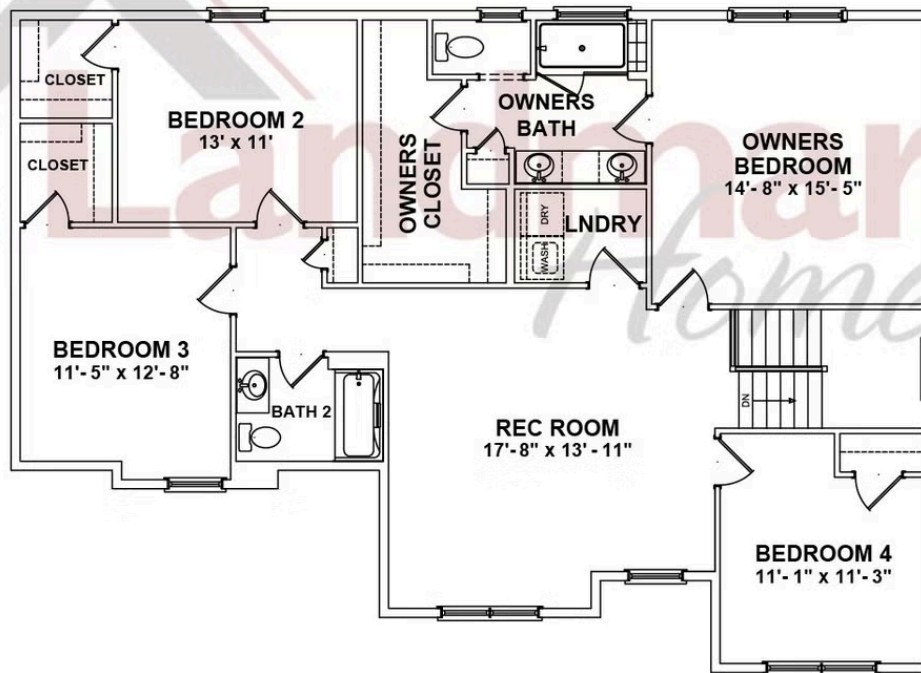


Single Family  
**610 Estate Drive**  
Mechanicsburg, PA 17055

**COMMUNITY SALES MANAGER**

Randy Brewbaker  
Call/Text 717-587-1469

## SECOND FLOOR



© 2024 Landmark Builders, Inc. We enforce our intellectual property rights to the fullest extent permitted by applicable law. Elevations and landscaping are artists' conceptions only. Floor plans may vary depending on elevation selected. Actual construction documents take precedence over artwork.

Document generated 2/22/26

