



Single Family

## 104 Notting Hill Court

Mechanicsburg, PA 17050

COMMUNITY SALES MANAGER

Christine Glover

Call/Text 717-344-8748

MOVE-IN READY



Home Priced at

# \$609,300

Plan: Charlotte

4 Bedrooms

2.5 Bathrooms

2,651 Sq. Ft.

Striking home features a welcoming front porch, stylish exterior, and a 2-car garage. The garage opens to a mudroom complete with a large pantry, powder room, and built-in lockers, perfect for storage. The first floor boasts durable vinyl plank flooring and 9' ceilings. To the front of the home is a carpeted flex room that can be used as a study, living room, or other versatile space. The kitchen is well-appointed with quartz countertops, a tile backsplash, and enhanced cabinetry and appliances. Adjacent to the kitchen is a sunny dining area with access to the rear patio and a comfortable family room warmed by a cozy fireplace with a stone surround. The 2nd floor owner's suite features an expansive closet and a private bathroom with a tile shower and double bowl vanity. Also on the 2nd floor, there are 3 additional bedrooms, a full bathroom, and a convenient laundry room.

Document generated 12/7/25





Single Family

# 104 Notting Hill Court

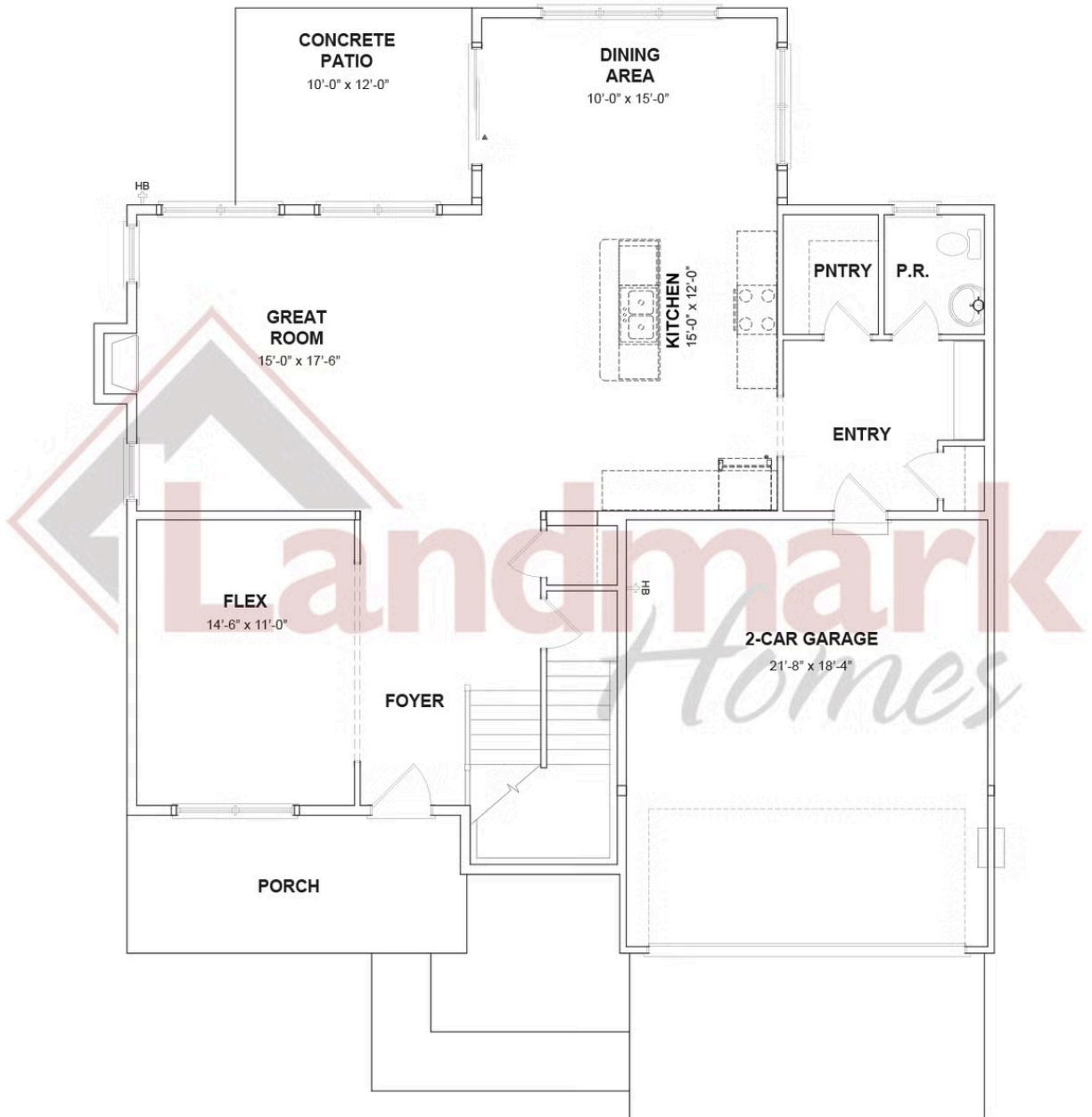
Mechanicsburg, PA 17050

COMMUNITY SALES MANAGER

Christine Glover

Call/Text 717-344-8748

## FIRST FLOOR



© 2025 Landmark Builders, Inc. We enforce our intellectual property rights to the fullest extent permitted by applicable law. Elevations and landscaping are artists' conceptions only. Floor plans may vary depending on elevation selected. Actual construction documents take precedence over artwork.

Document generated 12/7/25





Single Family

# 104 Notting Hill Court

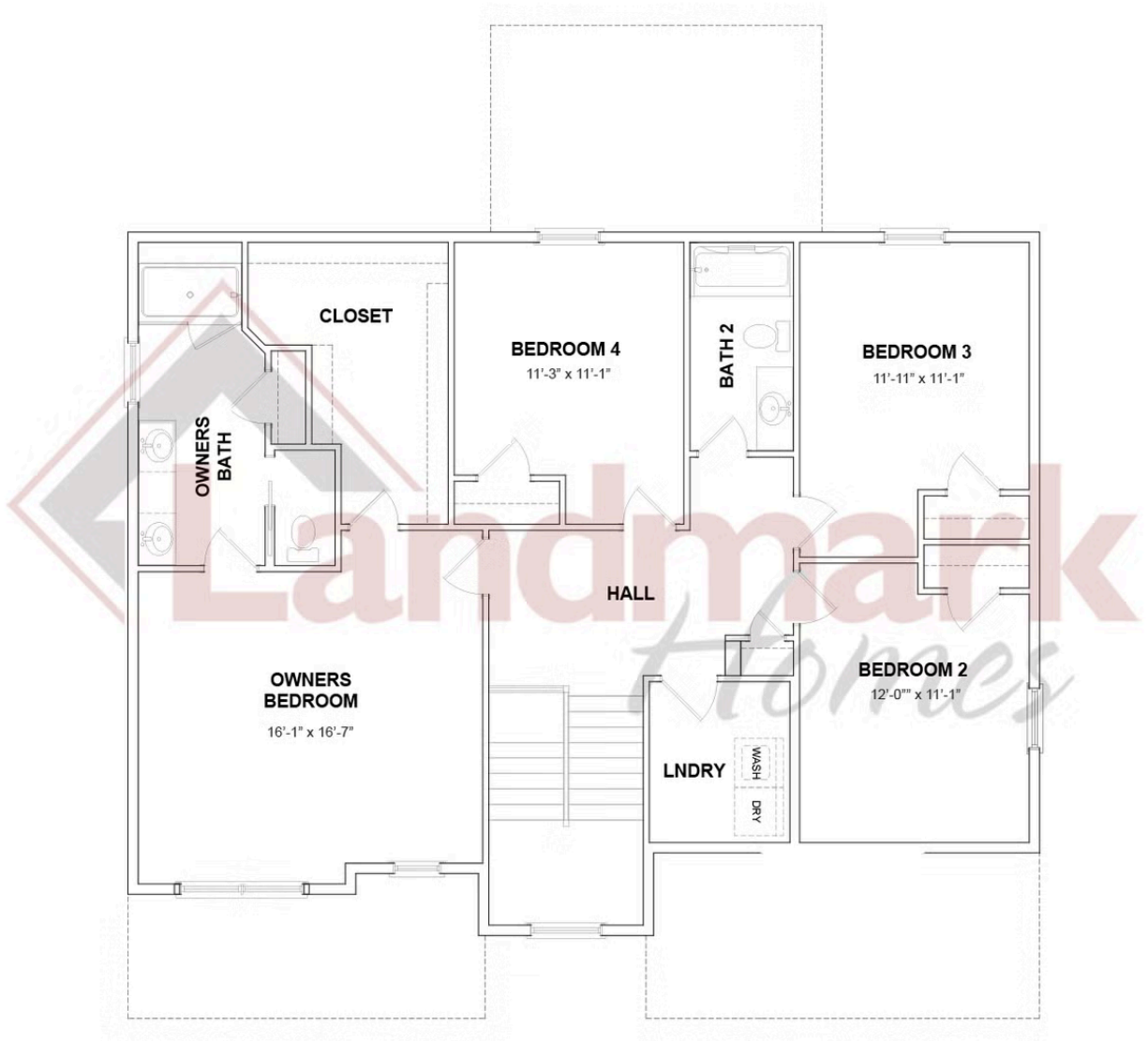
Mechanicsburg, PA 17050

COMMUNITY SALES MANAGER

Christine Glover

Call/Text 717-344-8748

## SECOND FLOOR



© 2025 Landmark Builders, Inc. We enforce our intellectual property rights to the fullest extent permitted by applicable law. Elevations and landscaping are artists' conceptions only. Floor plans may vary depending on elevation selected. Actual construction documents take precedence over artwork.

Document generated 12/7/25

