



Single Family
Southfield

Inspire 55+ at Legacy Park

COMMUNITY SALES MANAGER

Christine Glover

Call/Text 717-344-8748



Priced From
\$513,700

4 Elevations Available

2 Bedrooms

2 Bathrooms

1,888+ Sq. Ft.

2 Car Garage

Ideal first-floor living with private owner's suite tucked away in its own corner of the home. With over 1,800 square feet, 2 bedrooms, and 2 full baths, plus open living areas, this is a perfect home for entertaining guests. The kitchen is open to a spacious family room and the sunny dining area. Off of the 2-car, alley load garage is a convenient mudroom entry.

Available Elevations



Upgraded C Trademark



Upgraded A Traditional



Upgraded B Transitional



Upgraded Contemporary



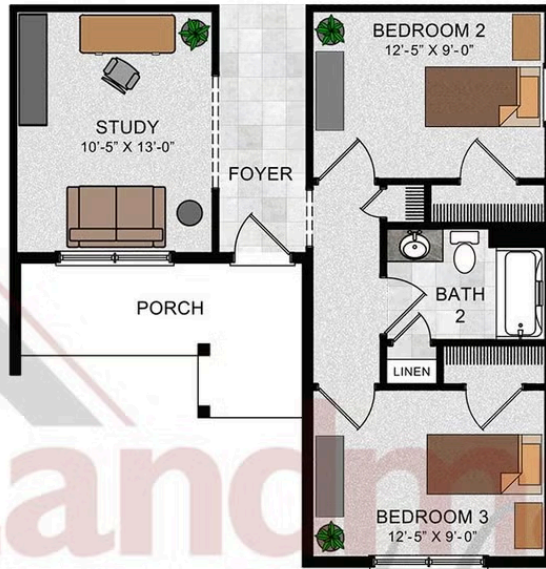
Southfield



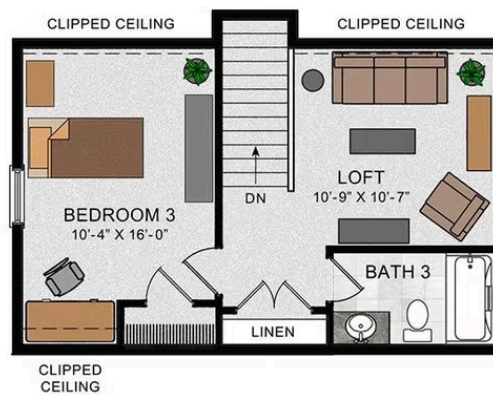
© 2022 Landmark Builders, Inc. We enforce our intellectual property rights to the fullest extent permitted by applicable law. Elevations and landscaping are artists' conceptions only. Floor plans may vary depending on elevation selected. Actual construction documents take precedence over artwork.

Southfield

OPTIONAL FIRST FLOOR
 W/ BEDROOM 3



OPTIONAL SECOND FLOOR
 W/ BEDROOM 3 AND LOFT



© 2022 Landmark Builders, Inc. We enforce our intellectual property rights to the fullest extent permitted by applicable law. Elevations and landscaping are artists' conceptions only. Floor plans may vary depending on elevation selected. Actual construction documents take precedence over artwork.