



Single Family  
**401 Stickley Drive**  
Mechanicsburg, PA 17055

**COMMUNITY SALES MANAGER**

Christine Glover  
Call/Text 717-344-8748

**UNDER CONSTRUCTION**



Home Priced at  
**\$618,900**

Plan: Jamie

2 Bedrooms

2.0 Bathrooms

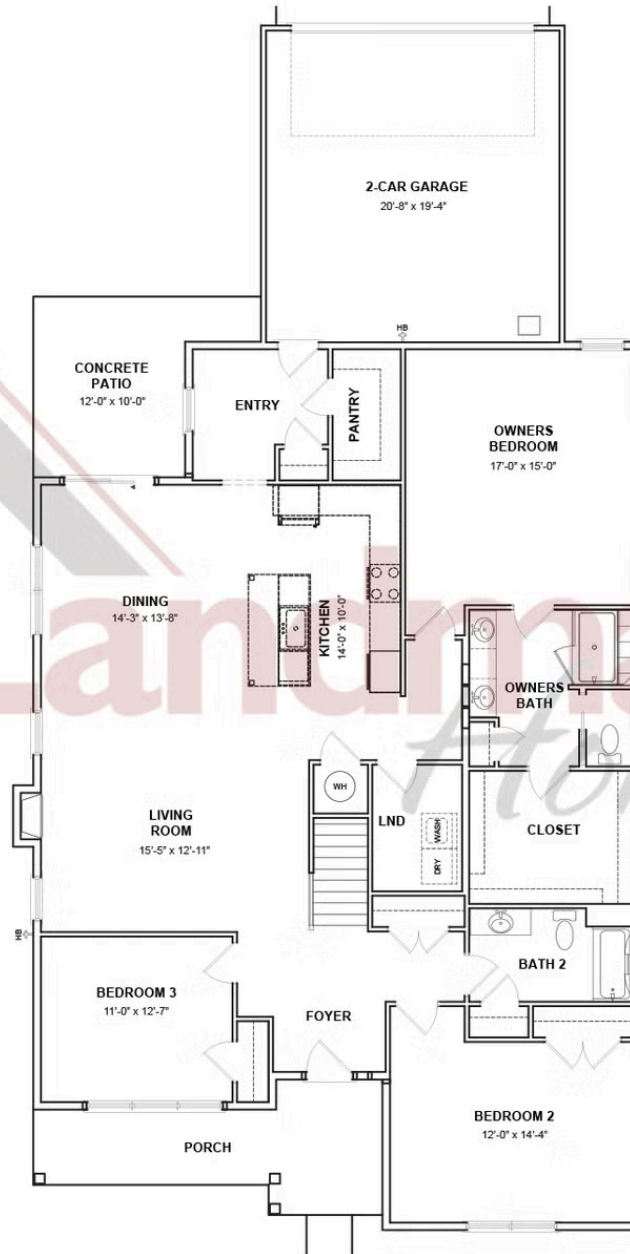
2,072 Sq. Ft.

**UNDER CONSTRUCTION – AVAILABLE THIS WINTER:** This charming 1-story home in our brand new Inspire 55+ community includes a welcoming front porch, 9' ceilings, and an unfinished bonus room on the 2nd level. The 2-car, rear-load garage opens to a mudroom complete with a built-in bench and large pantry. At the front of the home there are 2 bedrooms and a full bathroom. Stylish vinyl plank flooring in the foyer extends throughout the main living areas. The living room boasts a cathedral ceiling and a cozy gas fireplace with floor-to-ceiling stone. The well-appointed kitchen features stainless steel appliances, enhanced cabinetry and quartz countertops and backsplash. The sunny dining area provides sliding glass door access to the rear patio, perfect for entertaining or relaxing outdoors. Tucked quietly to the back of the home, the owner's suite includes a private bathroom with a double bowl vanity, tile shower, and an oversized closet.

Document generated 4/2/26



FIRST FLOOR



© 2025 Landmark Builders, Inc. We enforce our intellectual property rights to the fullest extent permitted by applicable law. Elevations and landscaping are artists' conceptions only. Floor plans may vary depending on elevation selected. Actual construction documents take precedence over artwork.



Single Family  
**401 Stickley Drive**  
Mechanicsburg, PA 17055

**COMMUNITY SALES MANAGER**

Christine Glover  
Call/Text 717-344-8748

## SECOND FLOOR



© 2025 Landmark Builders, Inc. We enforce our intellectual property rights to the fullest extent permitted by applicable law. Elevations and landscaping are artists' conceptions only. Floor plans may vary depending on elevation selected. Actual construction documents take precedence over artwork.

