



Single Family

Jamie

Inspire 55+ at Legacy Park

COMMUNITY SALES MANAGER

Christine Glover

Call/Text 717-344-8748



Priced From

\$534,100

1 Elevation Available

3 Bedrooms

2 Bathrooms

2,071+ Sq. Ft.

2 Car Garage

This comfortable one-story, 2000+ sq ft home features a front porch, 2-car alley load garage with mudroom entry, side patio or optional outdoor living area, 3 bedrooms and 2 baths. Optional gas fireplace in the living room, plenty of natural light in the dining room, and a convenient owner's suite with an expansive closet, and a private bathroom. Open kitchen with large center island provides easy access to dining room and living room.

Available Elevations



Upgraded C Trademark

Document generated 4/24/26

© 2026 Landmark Builders, Inc. We enforce our intellectual property rights to the fullest extent permitted by applicable law. Elevations and landscaping are artists' conceptions only. Actual construction documents take precedence over artwork. Similar photos shown are for representative purposes only. Details subject to

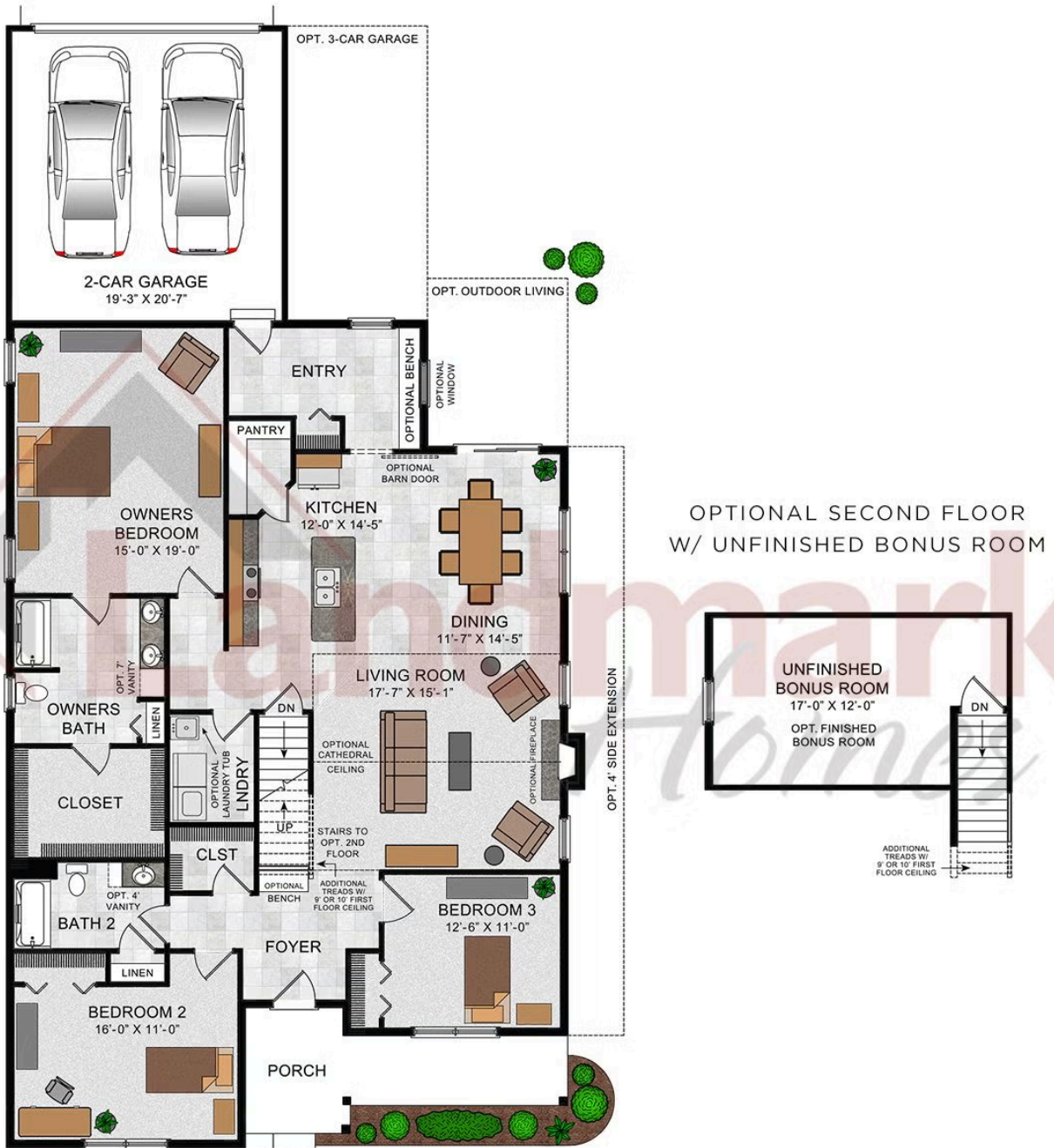
Call/Text anytime at (717) 283-5790

info@OwnALandmark.com

OwnALandmark.com



Jamie



© 2021 Landmark Builders, Inc. We enforce our intellectual property rights to the fullest extent permitted by applicable law. Elevations and landscaping are artists' conceptions only. Floor plans may vary depending on elevation selected. Actual construction documents take precedence over artwork.

© 2026 Landmark Builders, Inc. We enforce our intellectual property rights to the fullest extent permitted by applicable law. Elevations and landscaping are artists' conceptions only. Actual construction documents take precedence over artwork. Similar photos shown are for representative purposes only. Details subject to change without notification. See Community Sales Manager for details.

Document generated 4/24/26