



Single Family
Ashton

Inspire 55+ at Legacy Park

COMMUNITY SALES MANAGER

Christine Glover

Call/Text 717-344-8748



Priced From
\$535,000

2 Elevations Available

2 Bedrooms

2 Bathrooms

2,003+ Sq. Ft.

2 Car Garage

With 2,000 square feet of single-story living, and the option to add a 2nd floor, the Ashton offers plenty of room and flexibility in a convenient design. The flex room provides versatile options – a den, study, living room, or even a 3rd bedroom. The owner's suite is situated to the rear of the home and includes a private bath and expansive closet. The kitchen, which opens to the great room, includes an island with eat-in seating and a large pantry, plus and the option for a cathedral ceiling. The dining area is conveniently situated adjacent to the kitchen and enjoys sliding glass door access to the outdoors. Options for adding a 2nd floor include a storage age, loft, bedroom and bathroom, or a combination!

Available Elevations





Single Family
Ashton

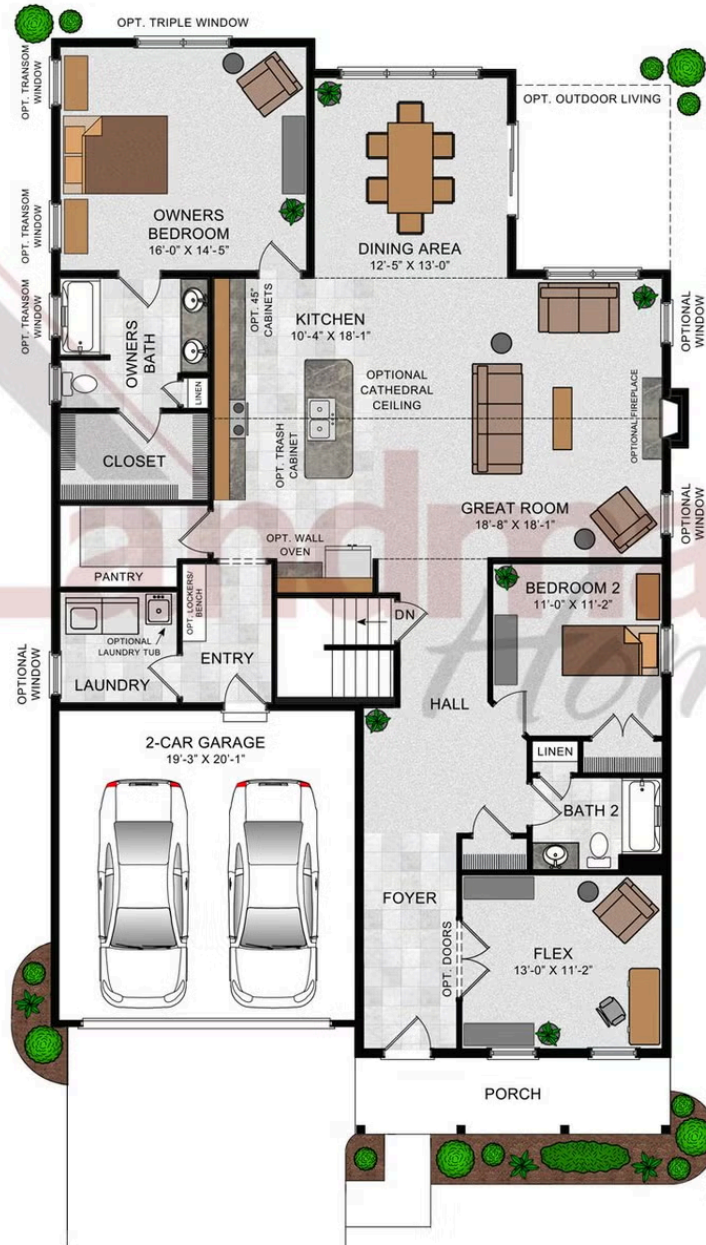
Inspire 55+ at Legacy Park

COMMUNITY SALES MANAGER

Christine Glover

Call/Text 717-344-8748

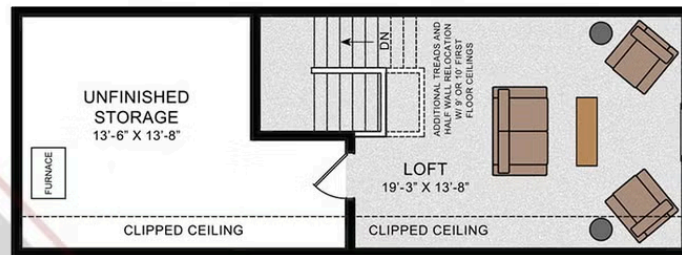
FIRST FLOOR



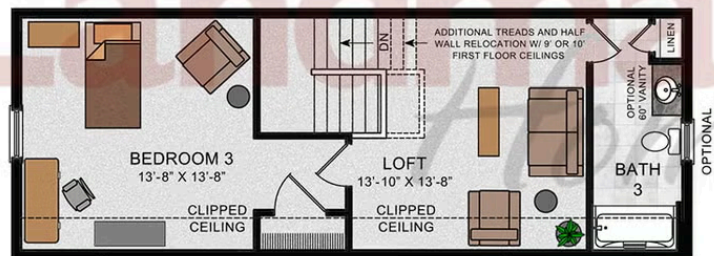
© 2025 Landmark Builders, Inc. We enforce our intellectual property rights to the fullest extent permitted by applicable law. Elevations and landscaping are artists' conceptions only. Floor plans may vary depending on elevation selected. Actual construction documents take precedence over artwork.



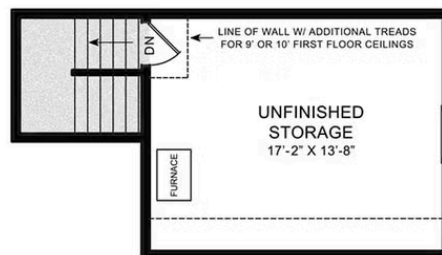
OPTIONAL SECOND FLOOR PLAN
 W/ UNFINISHED STORAGE AND LOFT



OPTIONAL SECOND FLOOR PLAN
 W/3RD BEDROOM AND BATH



OPTIONAL SECOND FLOOR PLAN
 W/UNFINISHED STORAGE



© 2025 Landmark Builders, Inc. We enforce our intellectual property rights to the fullest extent permitted by applicable law. Elevations and landscaping are artists' conceptions only. Floor plans may vary depending on elevation selected. Actual construction documents take precedence over artwork.