



Single Family

**2223 South Autumn Chase Drive**

Mechanicsburg, PA 17055

**COMMUNITY SALES MANAGER**

Christine Glover

Call/Text 717-344-8748

**UNDER CONSTRUCTION**



Home Priced at

**\$716,400**

Plan: Kingston

Elevation: Kingston Exterior

5 Bedrooms

3.0 Bathrooms

3,024 Sq. Ft.

**UNDER CONSTRUCTION – AVAILABLE THIS SPRING:** This stately 2-story home with an inviting front porch has a 2-car garage and 9' ceilings on the first floor. The mudroom entry from the garage features a spacious pantry and built-in bench with coat hooks above. Stylish vinyl plank flooring flows throughout the main living areas. To the front of the home, the foyer is flanked by a formal dining room and a cozy study. The kitchen features quartz countertops with tile backsplash, enhanced cabinetry and appliances, and a large center island, perfect for entertaining. Enjoy a morning coffee in the breakfast area or relax out back on the composite deck. The 2-story great room is warmed by a gas fireplace with stone surround and adjacent to a first-floor bedroom and full bathroom. On the second floor, the spacious owner's suite includes a private bathroom with a double bowl vanity, tile shower, freestanding tub, and an expansive closet. Down the hall there are three additional bedrooms, a full bathroom, and a convenient laundry room.

Document generated 2/21/26

Call/Text Anytime (717) 283-5790

[info@ownalandmark.com](mailto:info@ownalandmark.com)

[OwnALandmark.com](http://OwnALandmark.com)





Single Family

## 2223 South Autumn Chase Drive

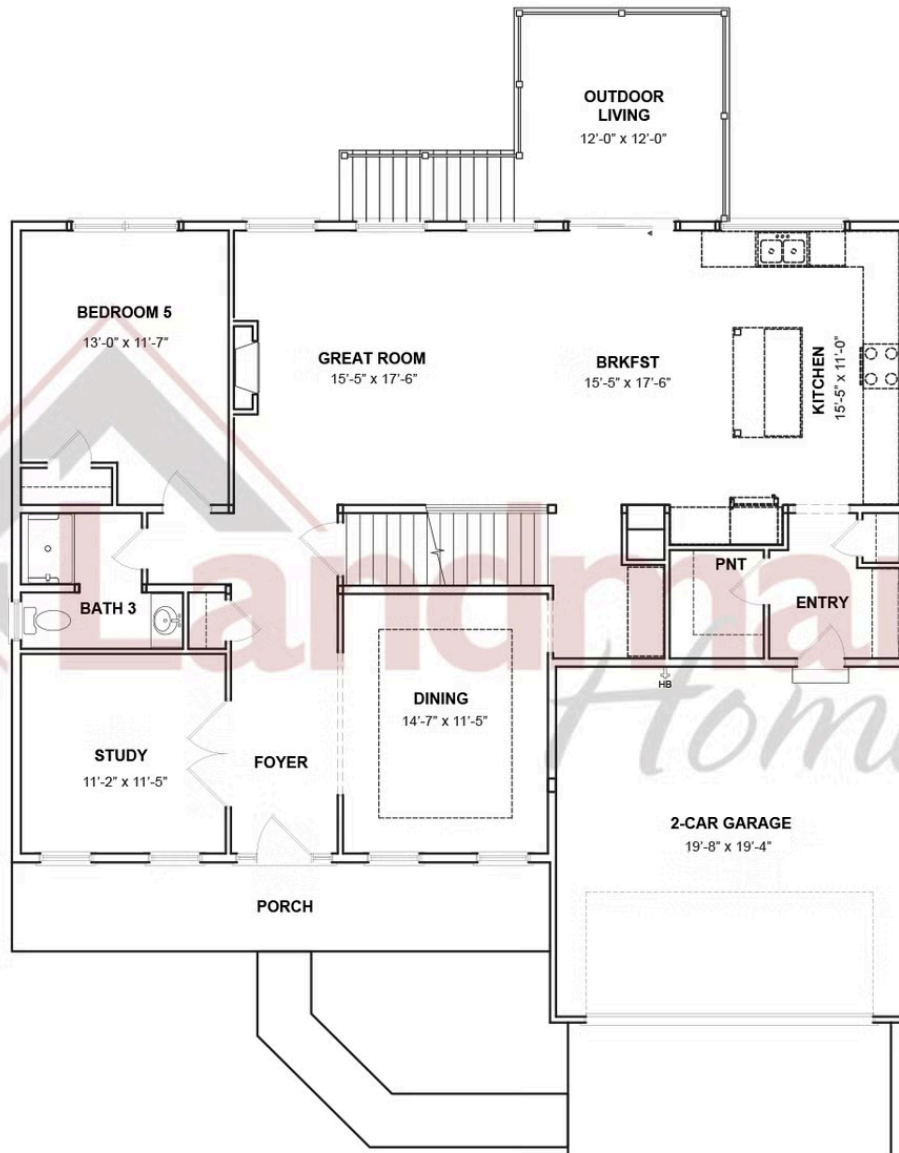
Mechanicsburg, PA 17055

COMMUNITY SALES MANAGER

Christine Glover

Call/Text 717-344-8748

### FIRST FLOOR



© 2026 Landmark Builders, Inc. We enforce our intellectual property rights to the fullest extent permitted by applicable law. Elevations and landscaping are artists' conceptions only. Floor plans may vary depending on elevation selected. Actual construction documents take precedence over artwork.





Single Family

**2223 South Autumn Chase Drive**

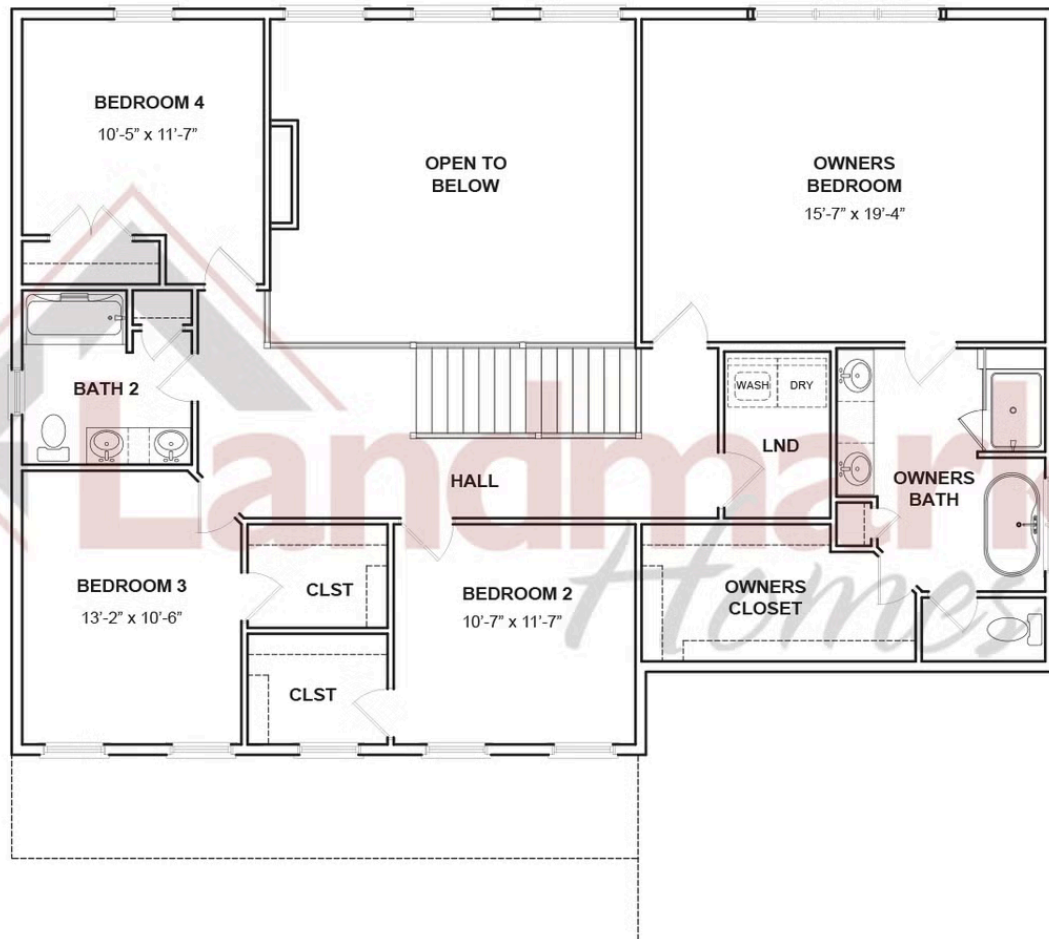
Mechanicsburg, PA 17055

**COMMUNITY SALES MANAGER**

Christine Glover

Call/Text 717-344-8748

## SECOND FLOOR



© 2026 Landmark Builders, Inc. We enforce our intellectual property rights to the fullest extent permitted by applicable law. Elevations and landscaping are artists' conceptions only. Floor plans may vary depending on elevation selected. Actual construction documents take precedence over artwork.

