



SALE PENDING



Home Priced at \$625,600

CHARLOTTE



BEDROOMS: 4



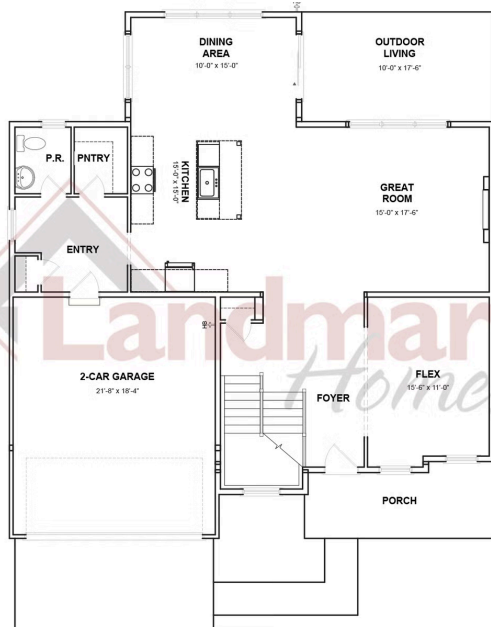
BATHROOMS: 2.5



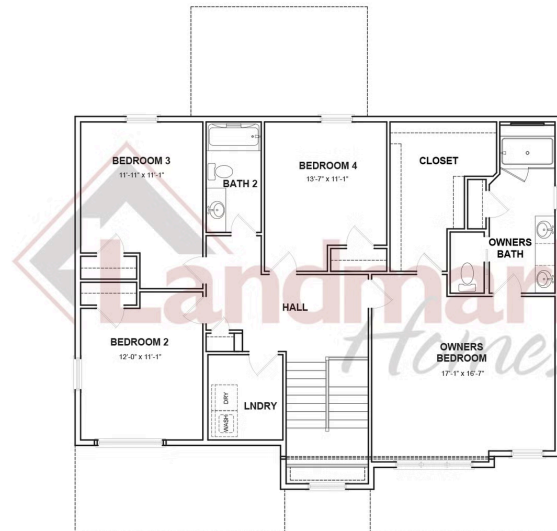
SQ FT: 2,663

Autumn Chase South | 2238 South Autumn Chase Drive, Mechanicsburg, PA 17055 | Homesite: #137

FIRST FLOOR



SECOND FLOOR



© 2026 Landmark Builders, Inc. We enforce our intellectual property rights to the fullest extent permitted by applicable law. Elevations and landscaping are artists' conceptions only. Floor plans may vary depending on elevation selected. Actual construction documents take precedence over artwork.

© 2026 Landmark Builders, Inc. We enforce our intellectual property rights to the fullest extent permitted by applicable law. Elevations and landscaping are artists' conceptions only. Floor plans may vary depending on elevation selected. Actual construction documents take precedence over artwork.

© 2026 Landmark Builders, Inc. We enforce our intellectual property rights to the fullest extent permitted by applicable law. Elevations and landscaping are artists' conceptions only. Actual construction documents take precedence over artwork. Similar photos shown are for representative purposes only. Details subject to change without notification. See Community Sales Manager for details. Document generated 4/22/26

