



Single Family
Oakley
Walton Hill

COMMUNITY SALES MANAGER

Christine Glover
Call/Text 717-344-8748



Priced From
\$616,900

1 Elevation Available

4 Bedrooms

2.5 Bathrooms

2,883+ Sq. Ft.

2 Car Garage

Two-story home with an owner's suite on the main level and a 2-car, lower level garage. Upon entering the foyer, there is a private study and stairs to the main level featuring a spacious kitchen, dining area and great room. The upper level is complete with 3 bedrooms and a full bathroom that can be converted to a Jack & Jill bath. There is also an option to add a second bathroom.

Available Elevations



Document generated 4/24/26

© 2026 Landmark Builders, Inc. We enforce our intellectual property rights to the fullest extent permitted by applicable law. Elevations and landscaping are artists' conceptions only. Actual construction documents take precedence over artwork. Similar photos shown are for representative purposes only. Details subject to

Call/Text anytime at (717) 283-5790

info@OwnALandmark.com

OwnALandmark.com



FIRST FLOOR



© 2023 Landmark Builders, Inc. We enforce our intellectual property rights to the fullest extent permitted by applicable law. Elevations and landscaping are artists' conceptions only. Floor plans may vary depending on elevation selected. Actual construction documents take precedence over artwork.

© 2026 Landmark Builders, Inc. We enforce our intellectual property rights to the fullest extent permitted by applicable law. Elevations and landscaping are artists' conceptions only. Actual construction documents take precedence over artwork. Similar photos shown are for representative purposes only. Details subject to change without notification. See Community Sales Manager for details.

Document generated 4/24/26

SECOND FLOOR

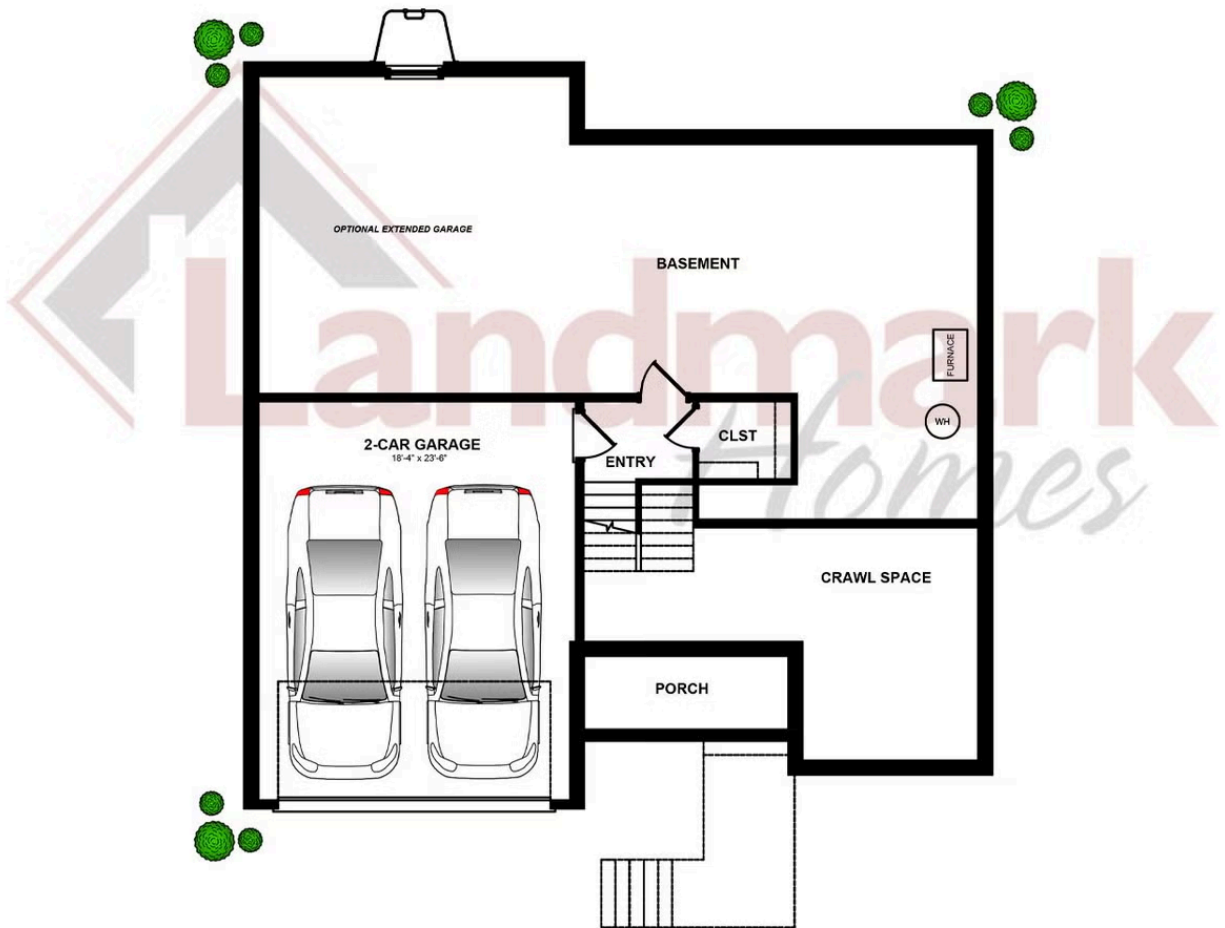


© 2023 Landmark Builders, Inc. We enforce our intellectual property rights to the fullest extent permitted by applicable law. Elevations and landscaping are artists' conceptions only. Floor plans may vary depending on elevation selected. Actual construction documents take precedence over artwork.

© 2026 Landmark Builders, Inc. We enforce our intellectual property rights to the fullest extent permitted by applicable law. Elevations and landscaping are artists' conceptions only. Actual construction documents take precedence over artwork. Similar photos shown are for representative purposes only. Details subject to change without notification. See Community Sales Manager for details.

Document generated 4/24/26

BASEMENT



© 2023 Landmark Builders, Inc. We enforce our intellectual property rights to the fullest extent permitted by applicable law. Elevations and landscaping are artists' conceptions only. Floor plans may vary depending on elevation selected. Actual construction documents take precedence over artwork.

© 2026 Landmark Builders, Inc. We enforce our intellectual property rights to the fullest extent permitted by applicable law. Elevations and landscaping are artists' conceptions only. Actual construction documents take precedence over artwork. Similar photos shown are for representative purposes only. Details subject to change without notification. See Community Sales Manager for details.

Document generated 4/24/26