



Single Family
Oakley
Walton Hill

COMMUNITY SALES MANAGER

Christine Glover

Call/Text 717-344-8748



Priced From
\$618,000

1 Elevation Available

4 Bedrooms

2.5 Bathrooms

2,883+ Sq. Ft.

2 Car Garage

Two-story home with an owner's suite on the main level and a 2-car, lower level garage. Upon entering the foyer, there is a private study and stairs to the main level featuring a spacious kitchen, dining area and great room. The upper level is complete with 3 bedrooms and a full bathroom that can be converted to a Jack & Jill bath. There is also an option to add a second bathroom.

Available Elevations



FIRST FLOOR



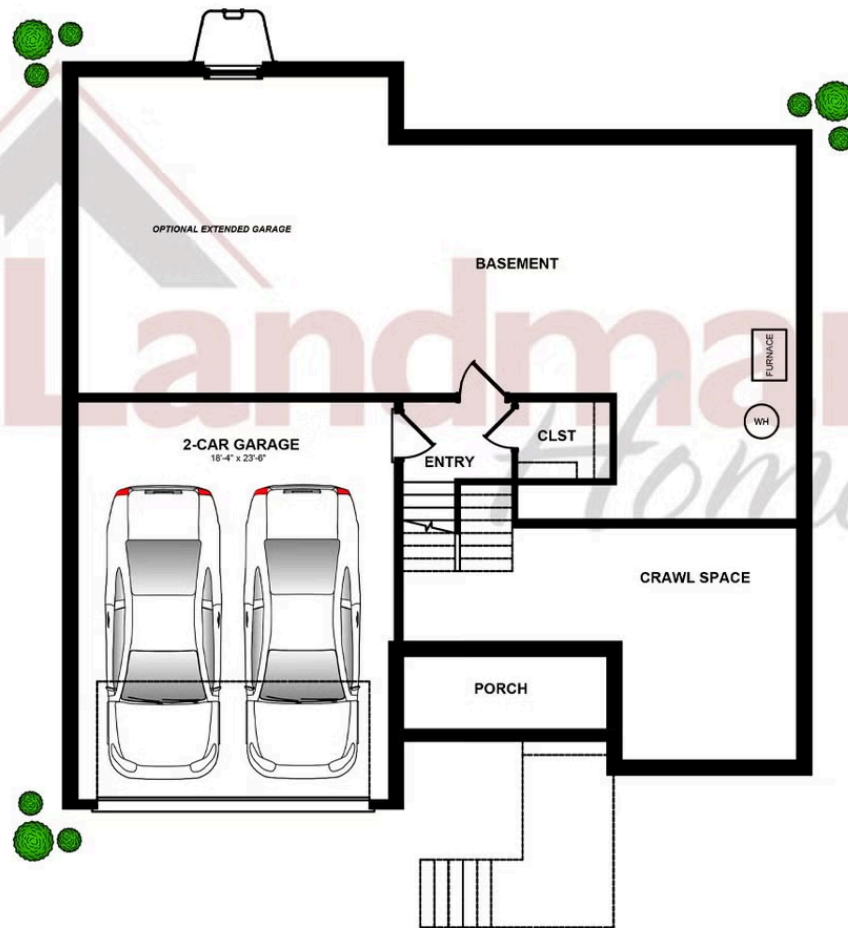
© 2023 Landmark Builders, Inc. We enforce our intellectual property rights to the fullest extent permitted by applicable law. Elevations and landscaping are artists' conceptions only. Floor plans may vary depending on elevation selected. Actual construction documents take precedence over artwork.

SECOND FLOOR



© 2023 Landmark Builders, Inc. We enforce our intellectual property rights to the fullest extent permitted by applicable law. Elevations and landscaping are artists' conceptions only. Floor plans may vary depending on elevation selected. Actual construction documents take precedence over artwork.

BASEMENT



© 2023 Landmark Builders, Inc. We enforce our intellectual property rights to the fullest extent permitted by applicable law. Elevations and landscaping are artists' conceptions only. Floor plans may vary depending on elevation selected. Actual construction documents take precedence over artwork.