

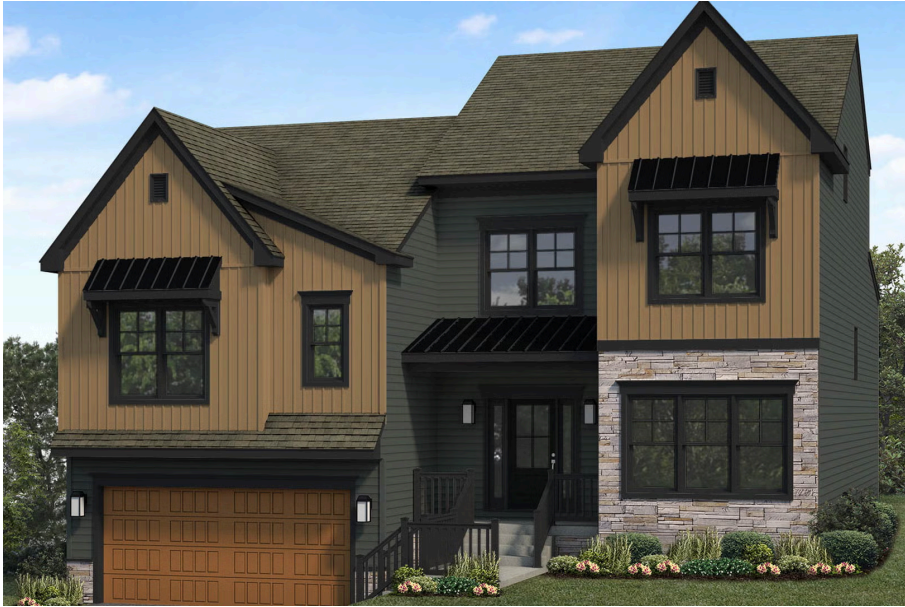


Single Family  
**Benson**  
Walton Hill

**COMMUNITY SALES MANAGER**

Christine Glover

Call/Text 717-344-8748



Priced From  
**\$603,300**

3 Elevations Available

3 Bedrooms

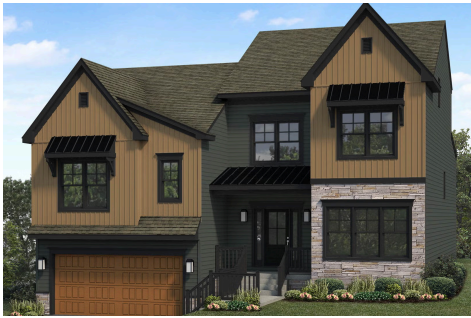
2.5 Bathrooms

2,642+ Sq. Ft.

2 Car Garage

Two-story home with an owner's suite on the main level and a 2-car, lower level garage. Upon entering the foyer, a study is quietly tucked to the side, and stairs lead to the main level featuring a spacious kitchen, dining area and great room. The upper level is complete with 2 bedrooms, a full bathroom, and a flex room that can be converted to a 4th bedroom. Optionally, keep the flex room and expand the home to add a 4th bedroom.

### Available Elevations



Upgraded B Transitional



Upgraded A Traditional



Upgraded C Trademark

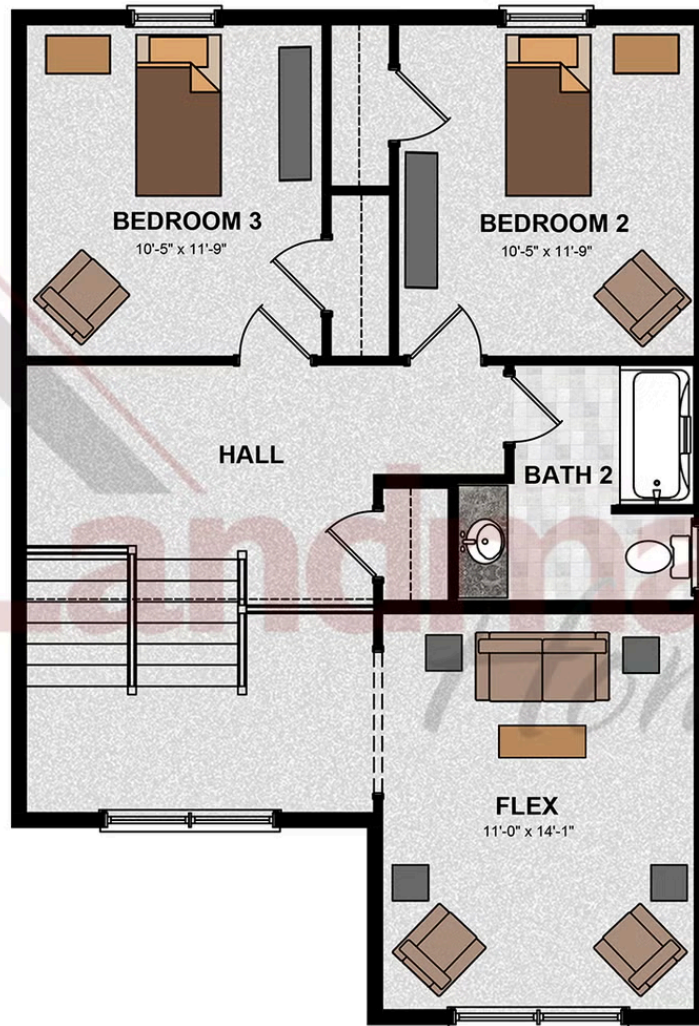


## FIRST FLOOR



© 2025 Landmark Builders, Inc. We enforce our intellectual property rights to the fullest extent permitted by applicable law. Elevations and landscaping are artists' conceptions only. Floor plans may vary depending on elevation selected. Actual construction documents take precedence over artwork.

## SECOND FLOOR



© 2025 Landmark Builders, Inc. We enforce our intellectual property rights to the fullest extent permitted by applicable law. Elevations and landscaping are artists' conceptions only. Floor plans may vary depending on elevation selected. Actual construction documents take precedence over artwork.



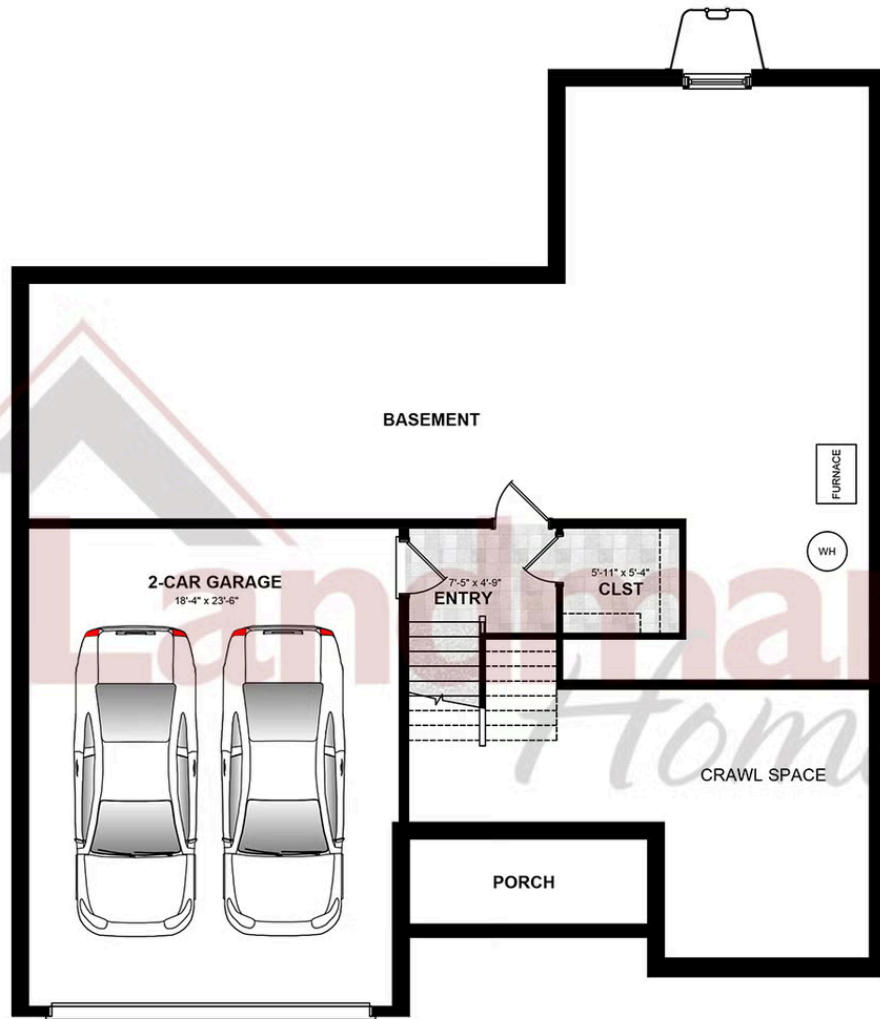


Single Family  
**Benson**  
Walton Hill

COMMUNITY SALES MANAGER

Christine Glover  
Call/Text 717-344-8748

## GROUND LEVEL



© 2025 Landmark Builders, Inc. We enforce our intellectual property rights to the fullest extent permitted by applicable law. Elevations and landscaping are artists' conceptions only. Floor plans may vary depending on elevation selected. Actual construction documents take precedence over artwork.

Document generated 2/17/26

