



Single Family  
**604 Lilliana Drive**  
Lebanon, PA 17046

**COMMUNITY SALES MANAGER**

Nicole Wamsher  
Call/Text 717-690-5746

**MOVE-IN READY**



Home Priced at  
**\$569,900**

Plan: Perry

2 Bedrooms

2.0 Bathrooms

1,911 Sq. Ft.

This charming, 1-story home in our Sweetbriar 55+ community features a welcoming front porch and a 2-car garage with mudroom entry. Stylish vinyl plank flooring flows throughout the main living areas. A carpeted study, secondary bedroom, and a full bathroom are found to the front of the home. The great room, warmed by a gas fireplace with floor-to-ceiling stone, shares a cathedral ceiling with the kitchen. The kitchen is well-appointed with enhanced cabinetry and appliances, quartz countertops with a tile backsplash, and a large pantry. Sliding glass doors in the dining area provide plenty of natural light and access to the rear composite deck. Tucked quietly to the back of the home, the spacious owner's suite includes a private bathroom with a tile shower, double bowl vanity, and an expansive closet.

Document generated 2/22/26



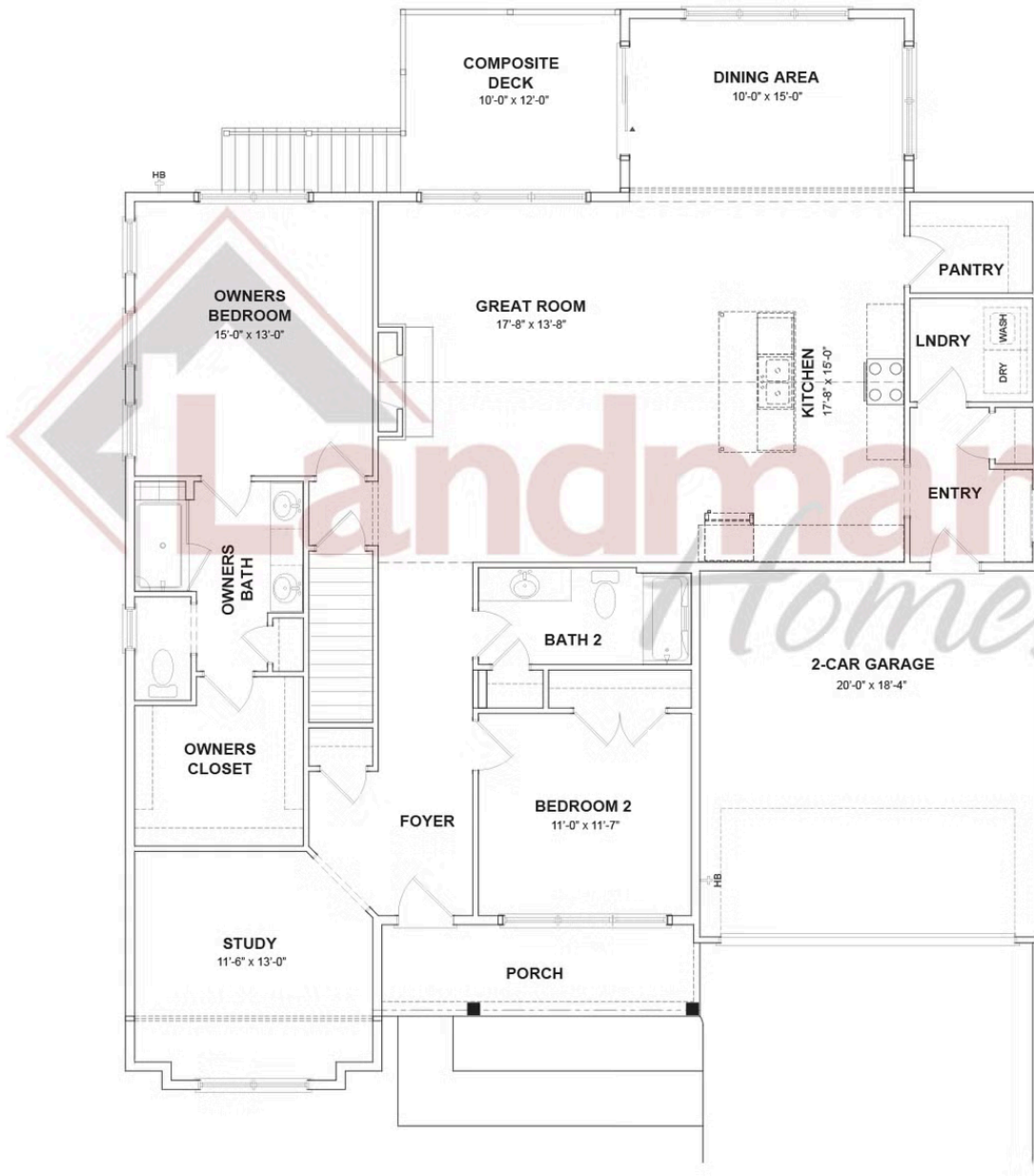


Single Family  
**604 Lilliana Drive**  
Lebanon, PA 17046

**COMMUNITY SALES MANAGER**

Nicole Wamsher  
Call/Text 717-690-5746

## FIRST FLOOR



© 2025 Landmark Builders, Inc. We enforce our intellectual property rights to the fullest extent permitted by applicable law. Elevations and landscaping are artists' conceptions only. Floor plans may vary depending on elevation selected. Actual construction documents take precedence over artwork.

