



Single Family
552 Bella May Circle
Lebanon, PA 17046

COMMUNITY SALES MANAGER

Nicole Wamsher
Call/Text 717-690-5746

UNDER CONSTRUCTION



Home Priced at
\$591,200

Plan: Northfield
Elevation: Northfield Exterior

2 Bedrooms
2.0 Bathrooms
1,830 Sq. Ft.

UNDER CONSTRUCTION – AVAILABLE THIS SUMMER: This charming 1-story home at The Crossings at Sweetbriar, a Landmark 55+ community, features a welcoming front porch, 9ft ceilings, and a study. The 2-car garage opens to a mudroom with built-in lockers and a spacious pantry. Beautiful vinyl plank flooring in the foyer extends to the main living areas. To the front of the home is a secondary bedroom and full bathroom. The kitchen and family room share a cathedral ceiling that gives it a bright, open feel. The kitchen boasts stainless steel appliances, quartz countertops with tile backsplash, and a large center island. A cozy gas fireplace with stone surround warms the family room, and a sliding glass door in the dining area leads to the rear composite deck, perfect for entertaining and relaxing. The owner's suite, tucked quietly to the back of the home, includes a private bathroom with a tile shower and an expansive closet. Adjacent to the owner's suite is a convenient laundry room. (The floor plan shown represents the standard layout for this home plan. Actual layout, features, and options may vary. Construction plans take precedence over artwork. Please see the Community Sales Manager for details.)

Document generated 4/8/26





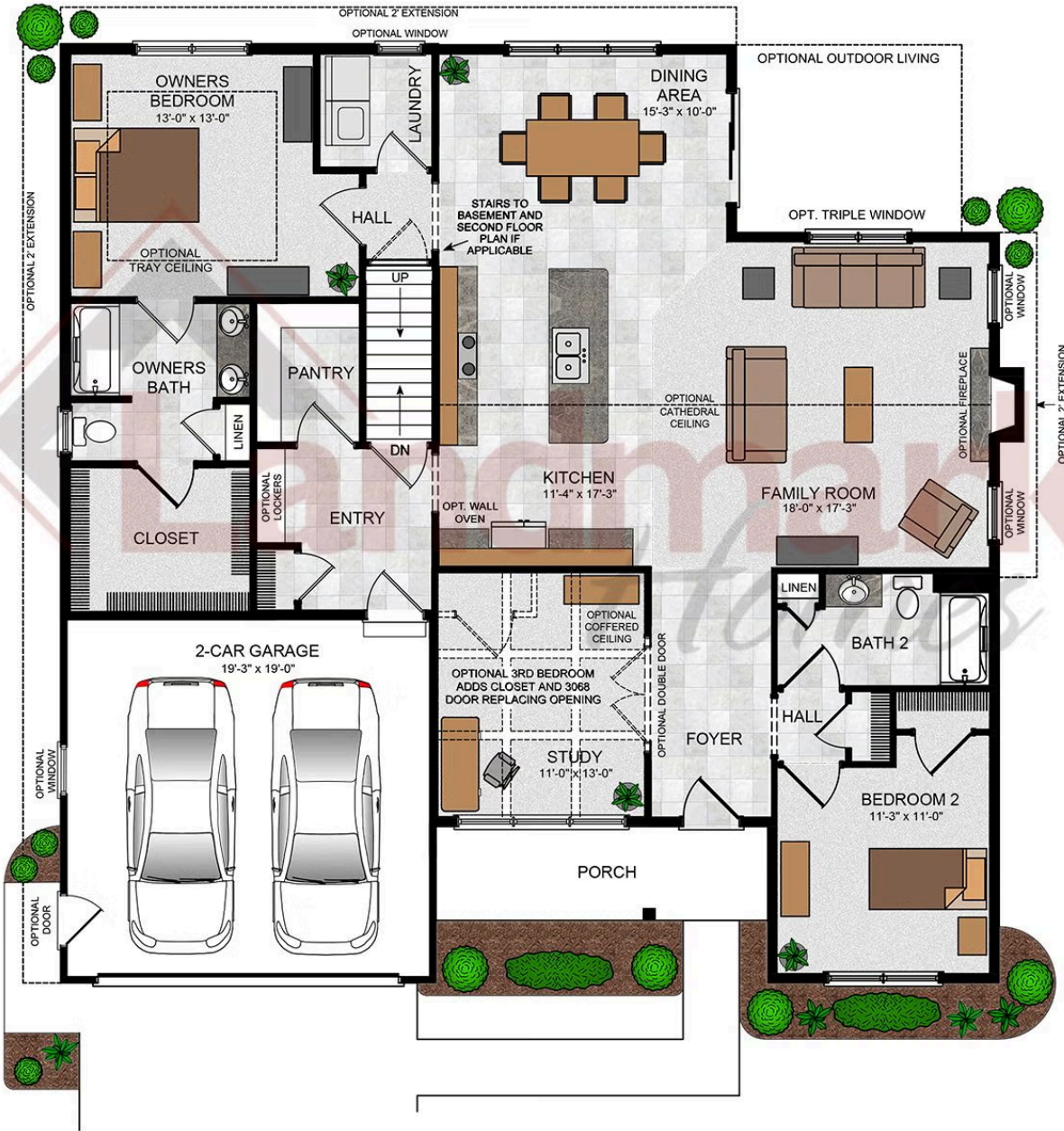
Single Family
552 Bella May Circle
 Lebanon, PA 17046

COMMUNITY SALES MANAGER

Nicole Wamsher

Call/Text 717-690-5746

Northfield

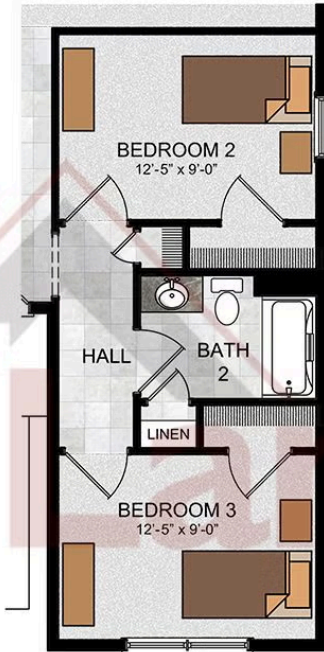


© 2022 Landmark Builders, Inc. We enforce our intellectual property rights to the fullest extent permitted by applicable law. Elevations and landscaping are artists' conceptions only. Floor plans may vary depending on elevation selected. Actual construction documents take precedence over artwork.



Northfield

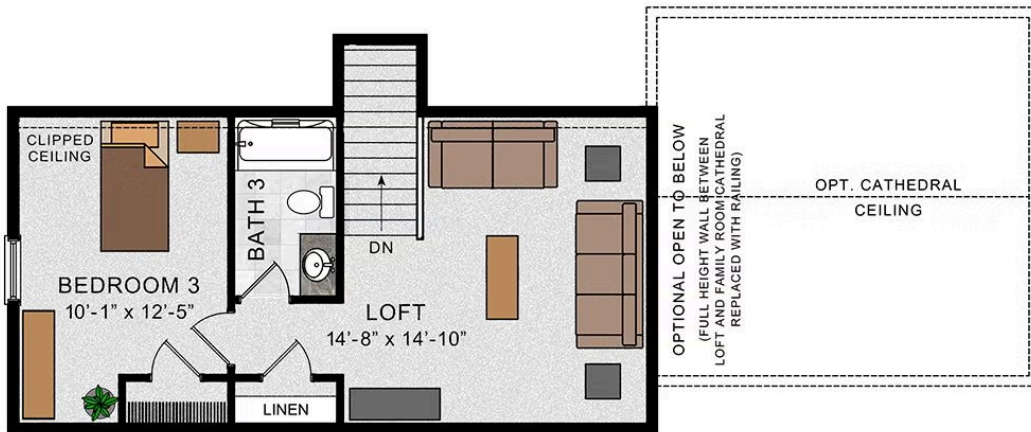
OPTIONAL FIRST FLOOR
 W/ BEDROOM 3



OPTIONAL SECOND
 FLOOR LOFT



OPTIONAL SECOND FLOOR PLAN W/
 3RD BEDROOM AND OPTIONAL LOFT
 OPEN TO FAMILY ROOM



© 2022 Landmark Builders, Inc. We enforce our intellectual property rights to the fullest extent permitted by applicable law. Elevations and landscaping are artists' conceptions only. Floor plans may vary depending on elevation selected. Actual construction documents take precedence over artwork.