



Single Family  
**Madison**

Sweetbriar 55+ Living

**COMMUNITY SALES MANAGER**

Nicole Wamsher

Call/Text 717-690-5746



Priced From  
**\$429,500**

2 Elevations Available

3 Bedrooms

2 Bathrooms

1,829+ Sq. Ft.

2 Car Garage

Sunny family room (with optional fireplace) is open to the breakfast area, which provides sliding glass door access to the patio, and is also open to the kitchen. Owner's suite with optional tray ceiling includes a spacious closet and private bathroom. Formal dining room at the front of the home offers an elegant touch to the entry with optional tray ceiling, as well as convenient access to the kitchen. (Pricing may reflect limited-time savings/incentives. See Community Sales Manager for details.)

**Available Elevations**



Upgraded B Transitional



Upgraded A Traditional

Document generated 4/24/26

© 2026 Landmark Builders, Inc. We enforce our intellectual property rights to the fullest extent permitted by applicable law. Elevations and landscaping are artists' conceptions only. Actual construction documents take precedence over artwork. Similar photos shown are for representative purposes only. Details subject to

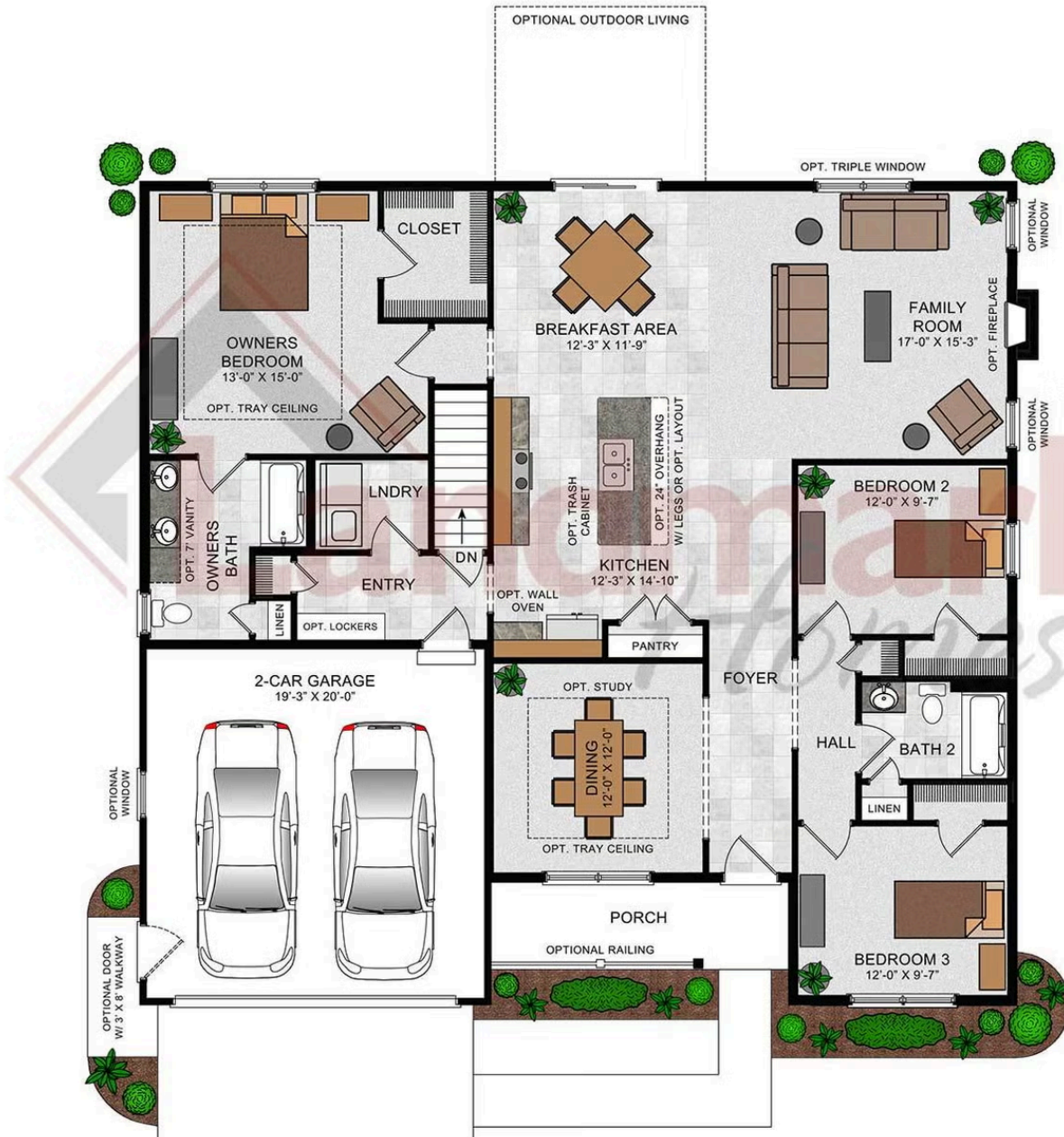




Single Family  
**Madison**  
 Sweetbriar 55+ Living

**COMMUNITY SALES MANAGER**  
 Nicole Wamsher  
 Call/Text 717-690-5746

Madison



© 2022 Landmark Builders, Inc. We enforce our intellectual property rights to the fullest extent permitted by applicable law. Elevations and landscaping are artists' conceptions only. Floor plans may vary depending on elevation selected. Actual construction documents take precedence over artwork.

© 2026 Landmark Builders, Inc. We enforce our intellectual property rights to the fullest extent permitted by applicable law. Elevations and landscaping are artists' conceptions only. Actual construction documents take precedence over artwork. Similar photos shown are for representative purposes only. Details subject to change without notification. See Community Sales Manager for details.

Document generated 4/24/26

