



Single Family
607 Lilliana Drive
Lebanon, PA 17046

COMMUNITY SALES MANAGER

Nicole Wamsher
Call/Text 717-690-5746

UNDER CONSTRUCTION



Home Priced at
\$466,300

Plan: Hartford

2 Bedrooms

2.0 Bathrooms

1,507 Sq. Ft.

UNDER CONSTRUCTION – AVAILABLE THIS SPRING: This charming 1-story home with a welcoming front porch includes a 2-car garage, mudroom entry, and 9' ceilings. Stylish vinyl plank flooring flows from the foyer to the main living areas. Next to the foyer are the secondary bedroom and bathroom. The kitchen is well-appointed with stainless steel appliances, quartz countertops with tile backsplash, and attractive cabinetry. Adjacent to the kitchen are the dining area, with access to the rear patio, and the family room warmed by a gas fireplace with floor to ceiling stone. Tucked quietly to the back of the home is the spacious owner's suite featuring a large closet and private bathroom.

Document generated 2/22/26



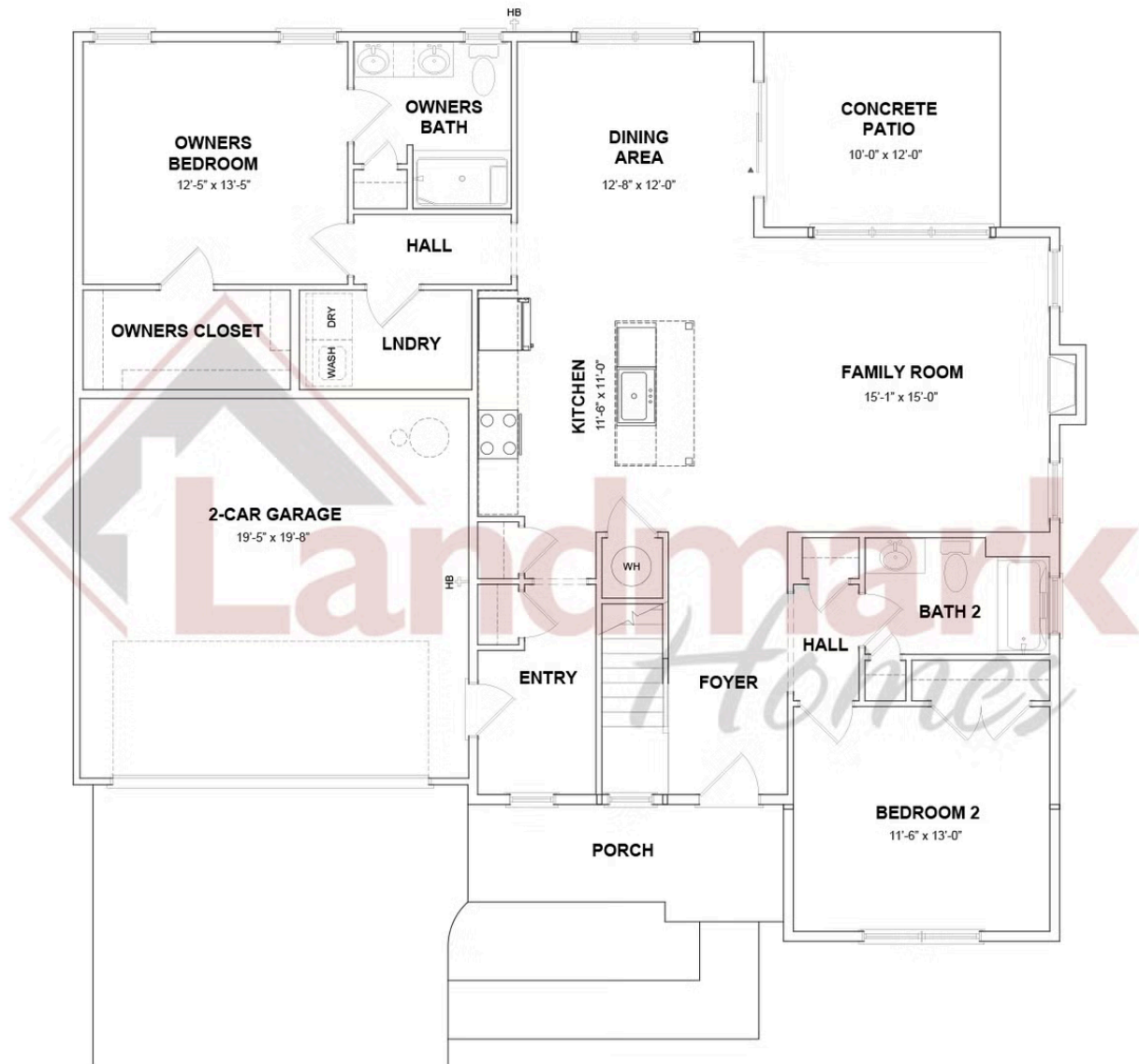


Single Family
607 Lilliana Drive
Lebanon, PA 17046

COMMUNITY SALES MANAGER

Nicole Wamsher
Call/Text 717-690-5746

FIRST FLOOR



© 2025 Landmark Builders, Inc. We enforce our intellectual property rights to the fullest extent permitted by applicable law. Elevations and landscaping are artists' conceptions only. Floor plans may vary depending on elevation selected. Actual construction documents take precedence over artwork.

Document generated 2/22/26





Single Family
607 Lilliana Drive
Lebanon, PA 17046

COMMUNITY SALES MANAGER

Nicole Wamsher
Call/Text 717-690-5746

SECOND FLOOR



© 2025 Landmark Builders, Inc. We enforce our intellectual property rights to the fullest extent permitted by applicable law. Elevations and landscaping are artists' conceptions only. Floor plans may vary depending on elevation selected. Actual construction documents take precedence over artwork.

