



Single Family  
**Westminster**  
Quinn Estates

**COMMUNITY SALES MANAGER**

Landmark Homes Online Advisor

Call/Text 717-283-5790



## Call for Price

2 Elevations Available

4 Bedrooms

3.5 Bathrooms

4,191+ Sq. Ft.

2 Car Garage

This spacious two-story home with over 4,000 sq feet offers many luxurious amenities and open spaces. The 1st floor includes a study with optional coffered ceiling, formal dining room, large family room with 2-story ceilings, optional morning room, breakfast area open to the kitchen with space to add a second island, and an owner's suite with private bath and expansive closet. 4 bedrooms and 3 1/2 baths, plus a bonus room on the lower level.

### Available Elevations



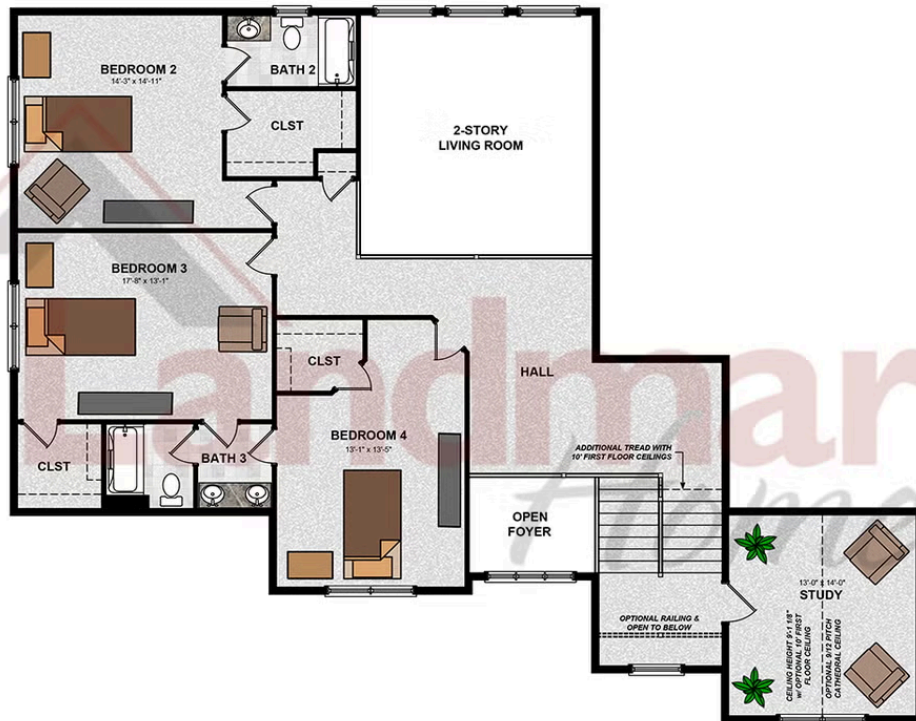
Westminster C Trademark Elevation



Westminster B Transitional Elevation

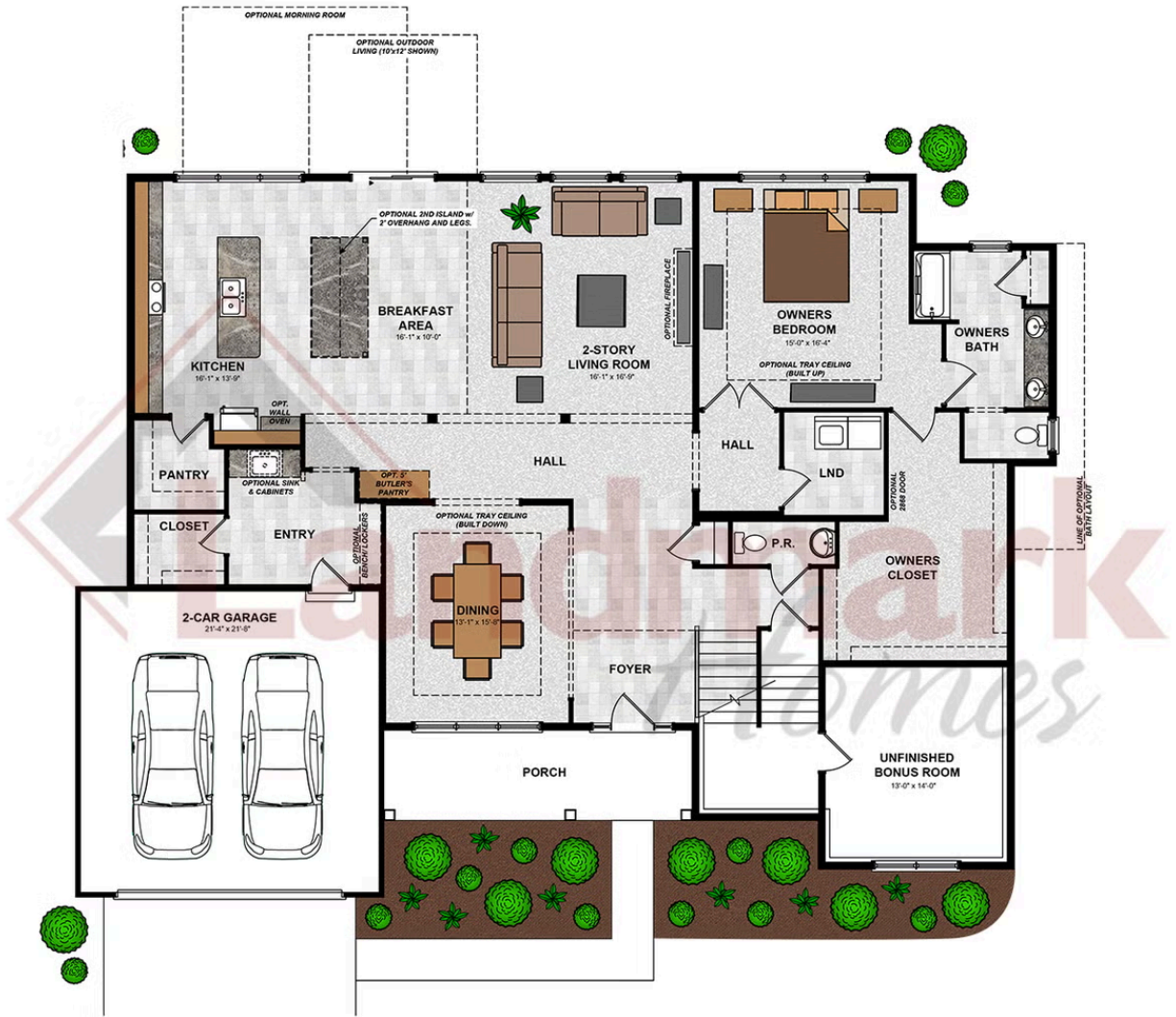


## SECOND FLOOR



© 2025 Landmark Builders, Inc. We enforce our intellectual property rights to the fullest extent permitted by applicable law. Elevations and landscaping are artists' conceptions only. Floor plans may vary depending on elevation selected. Actual construction documents take precedence over artwork.

## FIRST FLOOR



© 2025 Landmark Builders, Inc. We enforce our intellectual property rights to the fullest extent permitted by applicable law. Elevations and landscaping are artists' conceptions only. Floor plans may vary depending on elevation selected. Actual construction documents take precedence over artwork.