



Townhome
130 Foundry Lane
Lebanon, PA 17042

COMMUNITY SALES MANAGER

Lori Kahl

Call/Text 717-314-1448

UNDER CONSTRUCTION



Home Priced at
\$369,700

Plan: Maya

3 Bedrooms

2.5 Bathrooms

1,710 Sq. Ft.

UNDER CONSTRUCTION – AVAILABLE THIS WINTER: This 2-story townhome includes a 2-car garage, 9ft ceilings, and durable vinyl plank flooring throughout the first floor. The kitchen features stainless steel appliances, quartz countertops, and a large center island. Next to the kitchen is a spacious family room with an ample amount of natural light and a dining area that provides access to the rear patio. The 2nd floor boasts an owner's suite with an expansive closet and a private bathroom, 2 additional bedrooms, a full bathroom, and a convenient laundry room.

Document generated 12/24/25





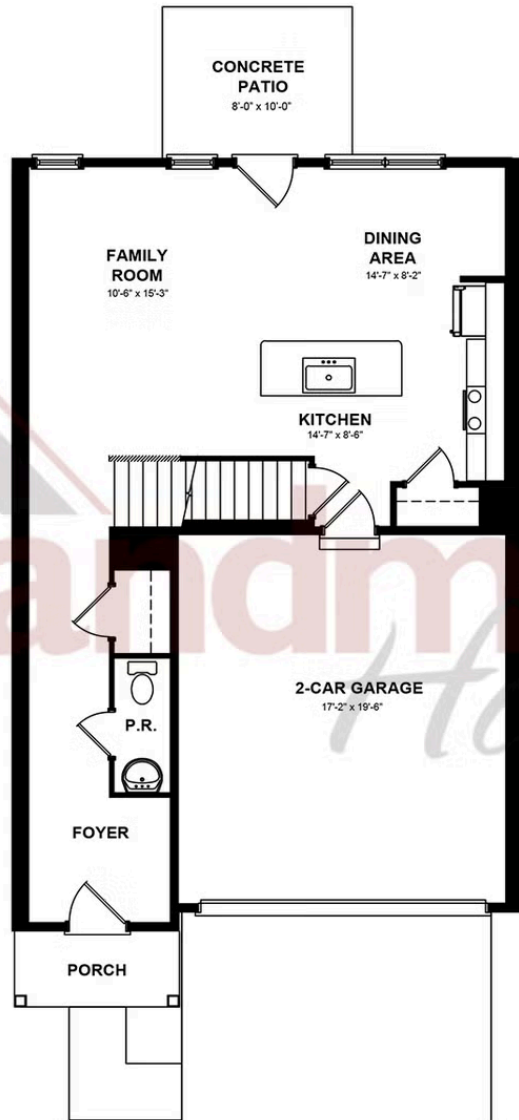
Townhome
130 Foundry Lane
Lebanon, PA 17042

COMMUNITY SALES MANAGER

Lori Kahl

Call/Text 717-314-1448

FIRST FLOOR



© 2025 Landmark Builders, Inc. We enforce our intellectual property rights to the fullest extent permitted by applicable law. Elevations and landscaping are artists' conceptions only. Floor plans may vary depending on elevation selected. Actual construction documents take precedence over artwork.





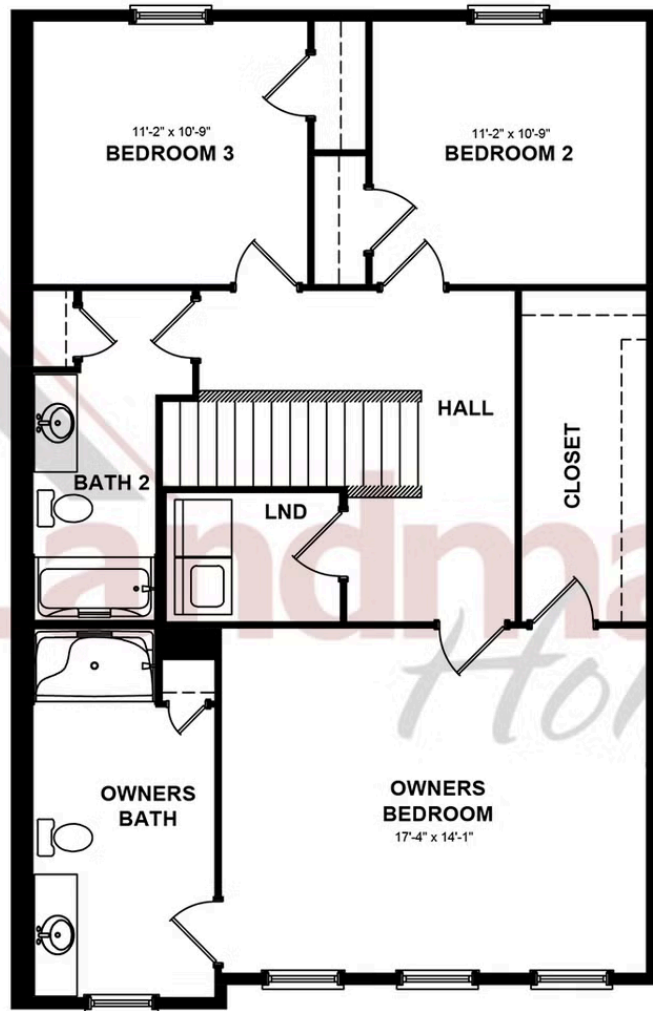
Townhome
130 Foundry Lane
Lebanon, PA 17042

COMMUNITY SALES MANAGER

Lori Kahl

Call/Text 717-314-1448

SECOND FLOOR



© 2025 Landmark Builders, Inc. We enforce our intellectual property rights to the fullest extent permitted by applicable law. Elevations and landscaping are artists' conceptions only. Floor plans may vary depending on elevation selected. Actual construction documents take precedence over artwork.

Document generated 12/24/25

