



Townhome  
**142 Foundry Lane**  
Lebanon, PA 17042

**COMMUNITY SALES MANAGER**

Lori Kahl

Call/Text 717-314-1448

**SALE PENDING**



**SALE PENDING**

Plan: Easton

3 Bedrooms

2.5 Bathrooms

1,780 Sq. Ft.

**\*SALE PENDING\* -- UNDER CONSTRUCTION – AVAILABLE THIS WINTER:** This 2-story, end-of-row townhome includes a first-floor owner's suite, a 2-car garage, and durable vinyl plank flooring. The family room, with an ample amount of natural light, opens to the rear patio. The kitchen is well-appointed with stainless steel appliances, quartz countertops, and a large center island that opens to the dining area. The owner's suite, tucked quietly to the back of the home, features an expansive closet and a private bathroom. On the 2nd floor, there are two additional bedrooms and a full bathroom.





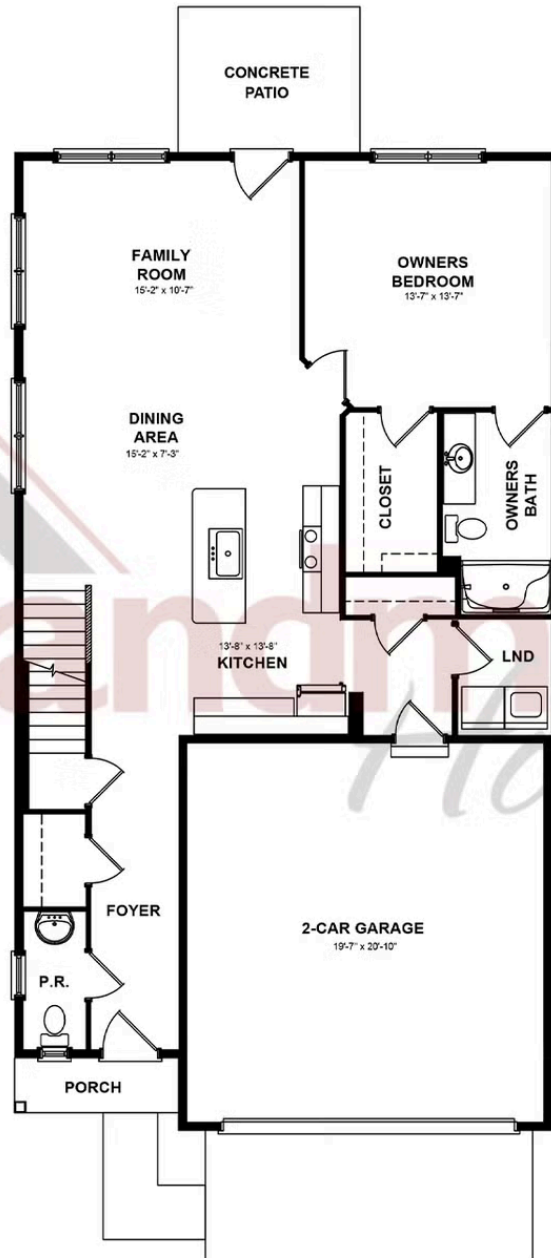
Townhome  
**142 Foundry Lane**  
Lebanon, PA 17042

**COMMUNITY SALES MANAGER**

Lori Kahl

Call/Text 717-314-1448

## FIRST FLOOR



© 2025 Landmark Builders, Inc. We enforce our intellectual property rights to the fullest extent permitted by applicable law. Elevations and landscaping are artists' conceptions only. Floor plans may vary depending on elevation selected. Actual construction documents take precedence over artwork.



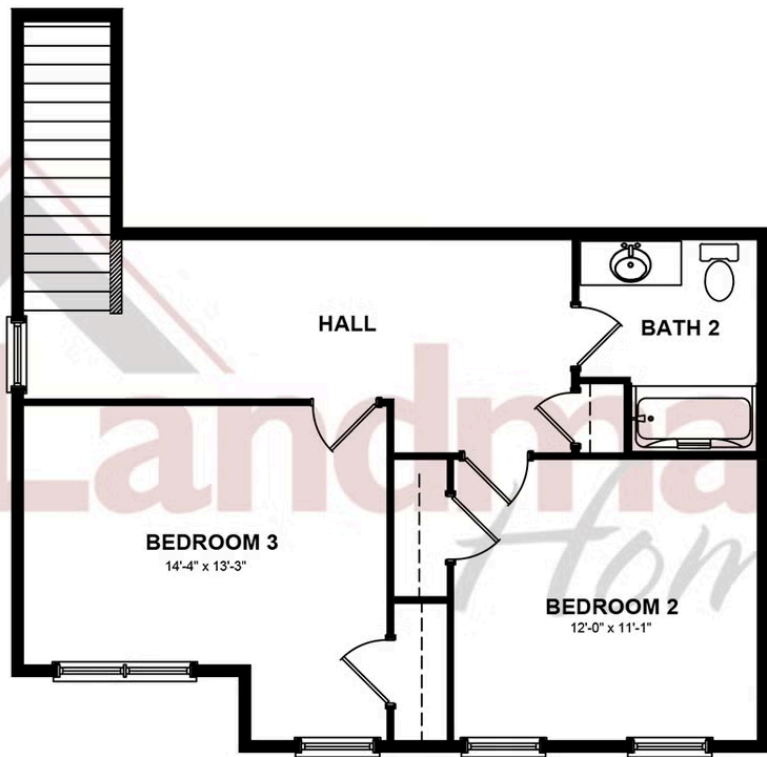


Townhome  
**142 Foundry Lane**  
Lebanon, PA 17042

**COMMUNITY SALES MANAGER**

Lori Kahl  
Call/Text 717-314-1448

## SECOND FLOOR



© 2025 Landmark Builders, Inc. We enforce our intellectual property rights to the fullest extent permitted by applicable law. Elevations and landscaping are artists' conceptions only. Floor plans may vary depending on elevation selected. Actual construction documents take precedence over artwork.

Document generated 2/22/26

