



Townhome
128 Foundry Lane
Lebanon, PA 17042

COMMUNITY SALES MANAGER

Lori Kahl

Call/Text 717-314-1448

UNDER CONSTRUCTION



Home Priced at
\$374,800

Plan: Easton

3 Bedrooms

2.5 Bathrooms

1,780 Sq. Ft.

UNDER CONSTRUCTION – AVAILABLE THIS WINTER: This 2-story, end-of-row townhome includes a first-floor owner's suite, a 2-car garage, and durable vinyl plank flooring. The family room, with an ample amount of natural light, opens to the rear patio. The kitchen is well-appointed with stainless steel appliances, quartz countertops, and a large center island that opens to the dining area. The owner's suite, tucked quietly to the back of the home, features an expansive closet and a private bathroom. On the 2nd floor, there are two additional bedrooms and a full bathroom.





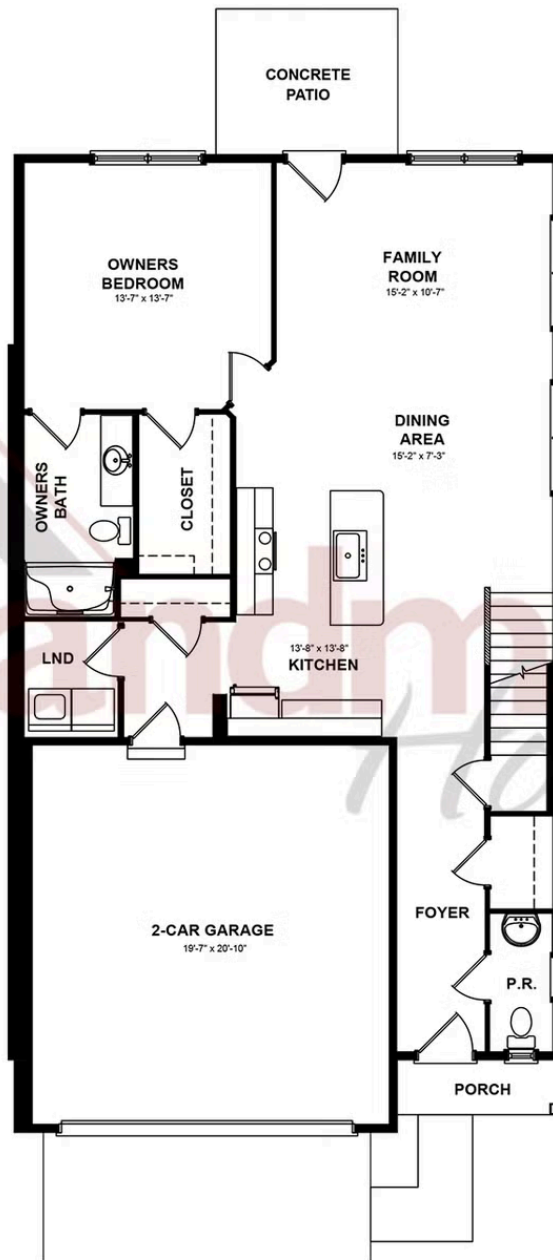
Townhome
128 Foundry Lane
Lebanon, PA 17042

COMMUNITY SALES MANAGER

Lori Kahl

Call/Text 717-314-1448

FIRST FLOOR



© 2025 Landmark Builders, Inc. We enforce our intellectual property rights to the fullest extent permitted by applicable law. Elevations and landscaping are artists' conceptions only. Floor plans may vary depending on elevation selected. Actual construction documents take precedence over artwork.



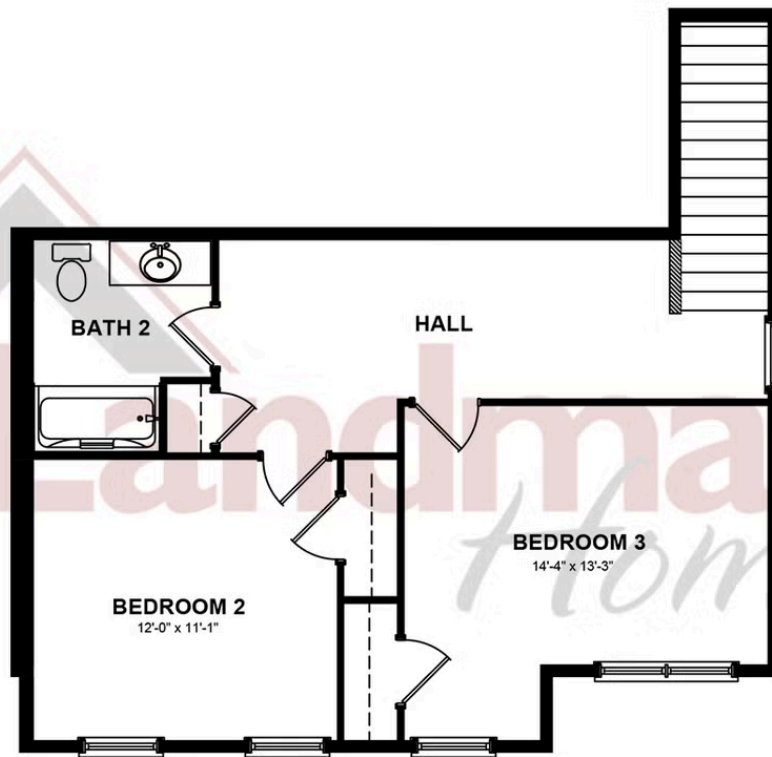


Townhome
128 Foundry Lane
Lebanon, PA 17042

COMMUNITY SALES MANAGER

Lori Kahl
Call/Text 717-314-1448

SECOND FLOOR



© 2025 Landmark Builders, Inc. We enforce our intellectual property rights to the fullest extent permitted by applicable law. Elevations and landscaping are artists' conceptions only. Floor plans may vary depending on elevation selected. Actual construction documents take precedence over artwork.

Document generated 2/22/26

