



Single Family  
**14 Betony Lane**  
Lebanon, PA 17042

**COMMUNITY SALES MANAGER**

Jilian Treadway  
Call/Text 717-799-6695

**MOVE-IN READY**



Home Priced at  
**\$689,900**

Plan: Kingston

4 Bedrooms

3.5 Bathrooms

3,312 Sq. Ft.

This stately 2-story home with an inviting front porch has a 2-car, side load garage and 9' ceilings on the first floor. The mudroom entry from the garage features a spacious pantry and built-in bench. Stylish vinyl plank flooring flows throughout the main living areas. To the front of the home, the foyer is flanked by a dining room, accented by craftsman wainscoting, and a cozy living room. A convenient butler's pantry connects the dining room to the kitchen featuring quartz countertops with a tile backsplash, enhanced cabinetry and appliances, and a large center island. The kitchen opens to a breakfast area and a beautiful sunroom, which also provides sliding glass door access to the screened-in porch. The 2-story great room, warmed by a gas fireplace with stone surround, is adjacent to the carpeted study. On the second floor, the owner's suite includes a private bathroom with a double bowl vanity, tile shower, freestanding tub, and an expansive closet. Three additional bedrooms, 2 full bathrooms, and a convenient laundry room complete the 2nd floor. (The floor plan shown represents the standard layout for this home plan. Actual layout, features, and options may vary. Construction plans take precedence over artwork. Please see the Community Sales Manager for details.)





Single Family  
**14 Betony Lane**  
Lebanon, PA 17042

COMMUNITY SALES MANAGER

Jilian Treadway  
Call/Text 717-799-6695

Kingston

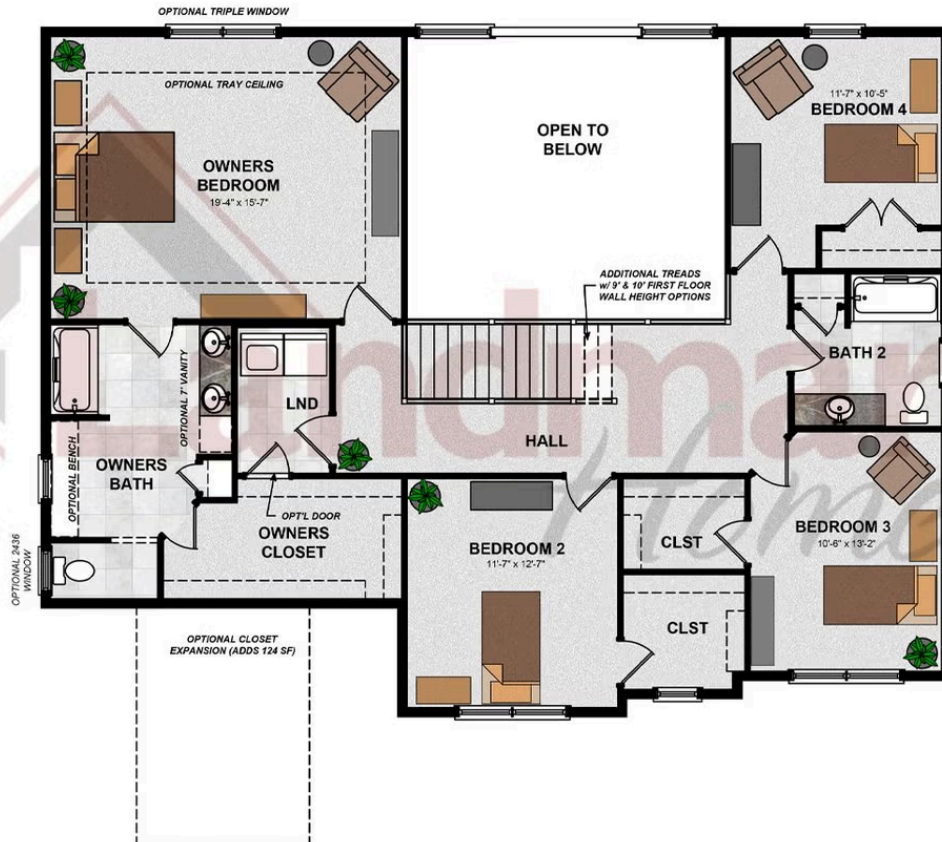


© 2022 Landmark Builders, Inc. We enforce our intellectual property rights to the fullest extent permitted by applicable law. Elevations and landscaping are artists' conceptions only. Floor plans may vary depending on elevation selected. Actual construction documents take precedence over artwork.

Document generated 2/6/26



## FIRST FLOOR



© 2025 Landmark Builders, Inc. We enforce our intellectual property rights to the fullest extent permitted by applicable law. Elevations and landscaping are artists' conceptions only. Floor plans may vary depending on elevation selected. Actual construction documents take precedence over artwork.