



Priced From  
**\$496,700**

4 Elevations Available

3 Bedrooms

2.5 Bathrooms

2,180+ Sq. Ft.

2 Car Garage

Convenient first-floor living with a charming exterior design, including a welcoming front porch. The Berkley features an open floor plan, a 2-car garage with mudroom entry, and the option for a second-floor loft space or an additional bedroom, full bathroom, and loft. The owner's suite is situated in its own corner of the house, with a private bathroom and expansive closet. The kitchen opens to the family room with the option for a cathedral ceiling with wood beams. Explore all the options available to make the Berkley model suit your personal needs! (See Community Sales Manager for details.)

### Available Elevations



Upgraded Contemporary Elevation



Upgraded C Trademark



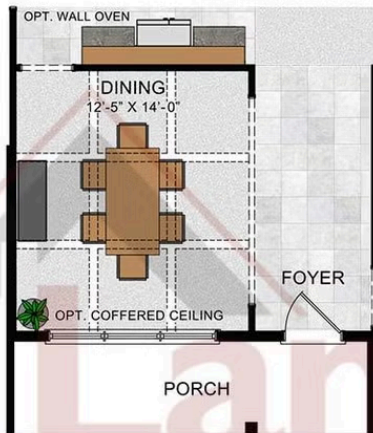
Upgraded A Traditional



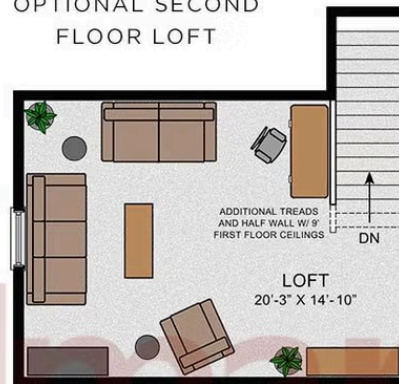
Upgraded B Transitional



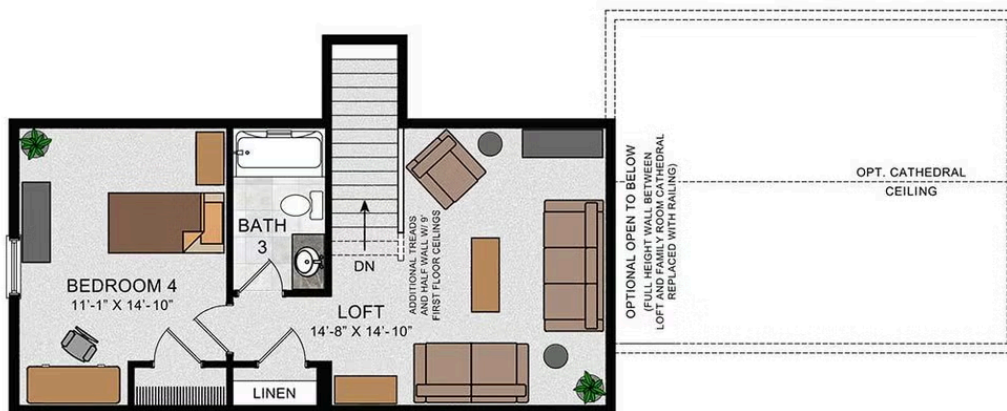
OPTIONAL DINING  
 REPLACING STUDY



OPTIONAL SECOND  
 FLOOR LOFT



OPTIONAL SECOND FLOOR PLAN W/ 4TH BEDROOM  
 AND OPTIONAL LOFT OPEN TO FAMILY ROOM



© 2022 Landmark Builders, Inc. We enforce our intellectual property rights to the fullest extent permitted by applicable law. Elevations and landscaping are artists' conceptions only. Floor plans may vary depending on elevation selected. Actual construction documents take precedence over artwork.

© 2026 Landmark Builders, Inc. We enforce our intellectual property rights to the fullest extent permitted by applicable law. Elevations and landscaping are artists' conceptions only. Actual construction documents take precedence over artwork. Similar photos shown are for representative purposes only. Details subject to change without notification. See Community Sales Manager for details.