



Single Family
Berkley
Fox Bend

COMMUNITY SALES MANAGER

Jilian Treadway
Call/Text 717-799-6695



Priced From
\$508,300

4 Elevations Available

3 Bedrooms

2.5 Bathrooms

2,180+ Sq. Ft.

2 Car Garage

Convenient first-floor living with a charming exterior design, including a welcoming front porch. The Berkley features an open floor plan, a 2-car garage with mudroom entry, and the option for a second-floor loft space or an additional bedroom, full bathroom, and loft. The owner's suite is situated in its own corner of the house, with a private bathroom and expansive closet. The kitchen opens to the family room with the option for a cathedral ceiling with wood beams. Explore all the options available to make the Berkley model suit your personal needs! (See Community Sales Manager for details.)

Available Elevations



Upgraded Contemporary Elevation



Upgraded C Trademark



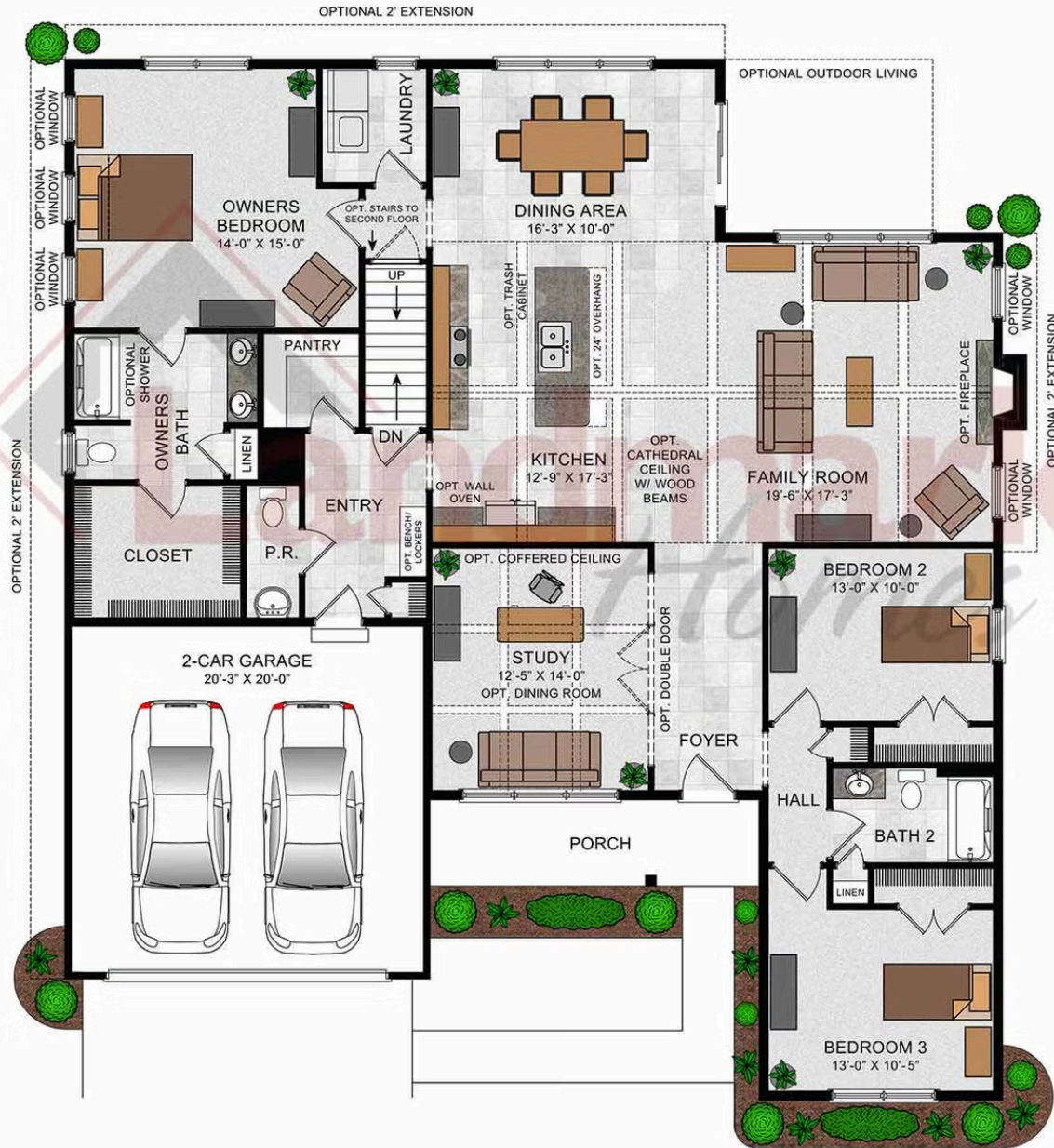
Upgraded A Traditional



Upgraded B Transitional

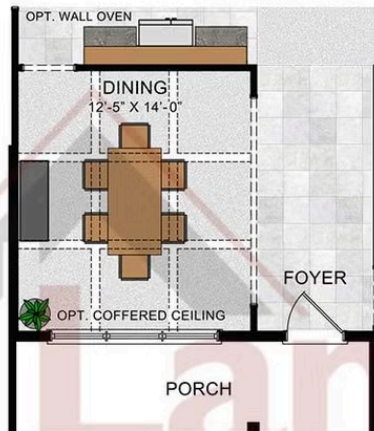


Berkley

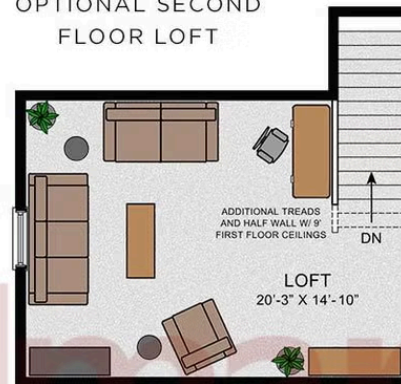


© 2022 Landmark Builders, Inc. We enforce our intellectual property rights to the fullest extent permitted by applicable law. Elevations and landscaping are artists' conceptions only. Floor plans may vary depending on elevation selected. Actual construction documents take precedence over artwork.

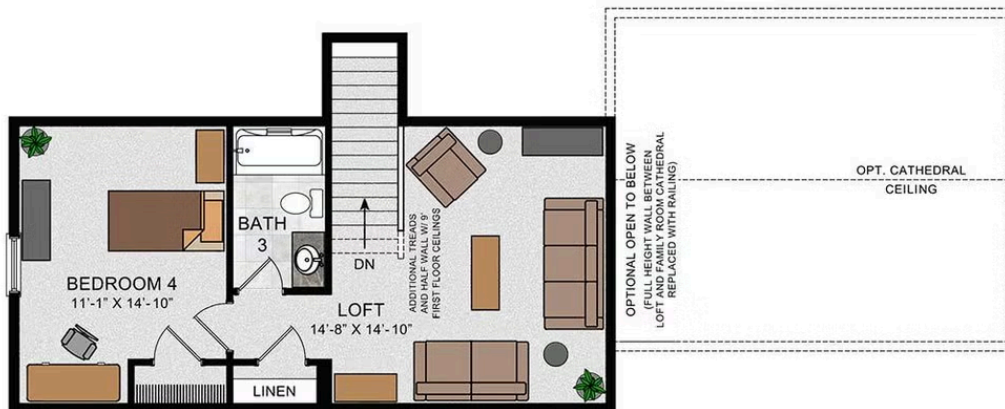
OPTIONAL DINING
REPLACING STUDY



OPTIONAL SECOND
FLOOR LOFT



OPTIONAL SECOND FLOOR PLAN W/ 4TH BEDROOM
AND OPTIONAL LOFT OPEN TO FAMILY ROOM



© 2022 Landmark Builders, Inc. We enforce our intellectual property rights to the fullest extent permitted by applicable law. Elevations and landscaping are artists' conceptions only. Floor plans may vary depending on elevation selected. Actual construction documents take precedence over artwork.