



Single Family  
**124 Forge Drive**  
Lebanon, PA 17042

**COMMUNITY SALES MANAGER**

Jilian Treadway  
Call/Text 717-799-6695

**MOVE-IN READY**



Home Priced at  
**\$639,900**

Plan: Wesley

4 Bedrooms

2.5 Bathrooms

3,085 Sq. Ft.

This craftsman style, 2-story home features 9' ceilings on the first floor, a 2-car, garage with an additional storage area, and a mudroom entry complete with built-in lockers, a powder room and closet. Stylish vinyl plank flooring flows throughout the main living areas. The 2-story foyer is flanked by a formal dining room and a versatile, carpeted flex room. A butler's pantry connects the kitchen and dining room along with a spacious pantry. The kitchen is well-appointed with stainless steel appliances, quartz countertops with a tile backsplash, and a large center island. Adjacent to the kitchen is a breakfast area with access to the rear patio, and a cozy family room warmed by a gas fireplace with stone surround. On the second floor, the comfortable owner's suite boasts an expansive closet and a private bathroom with a double bowl vanity and tile shower. Three additional bedrooms, a full bathroom, laundry room, and rec room complete the second floor.

Document generated 2/22/26



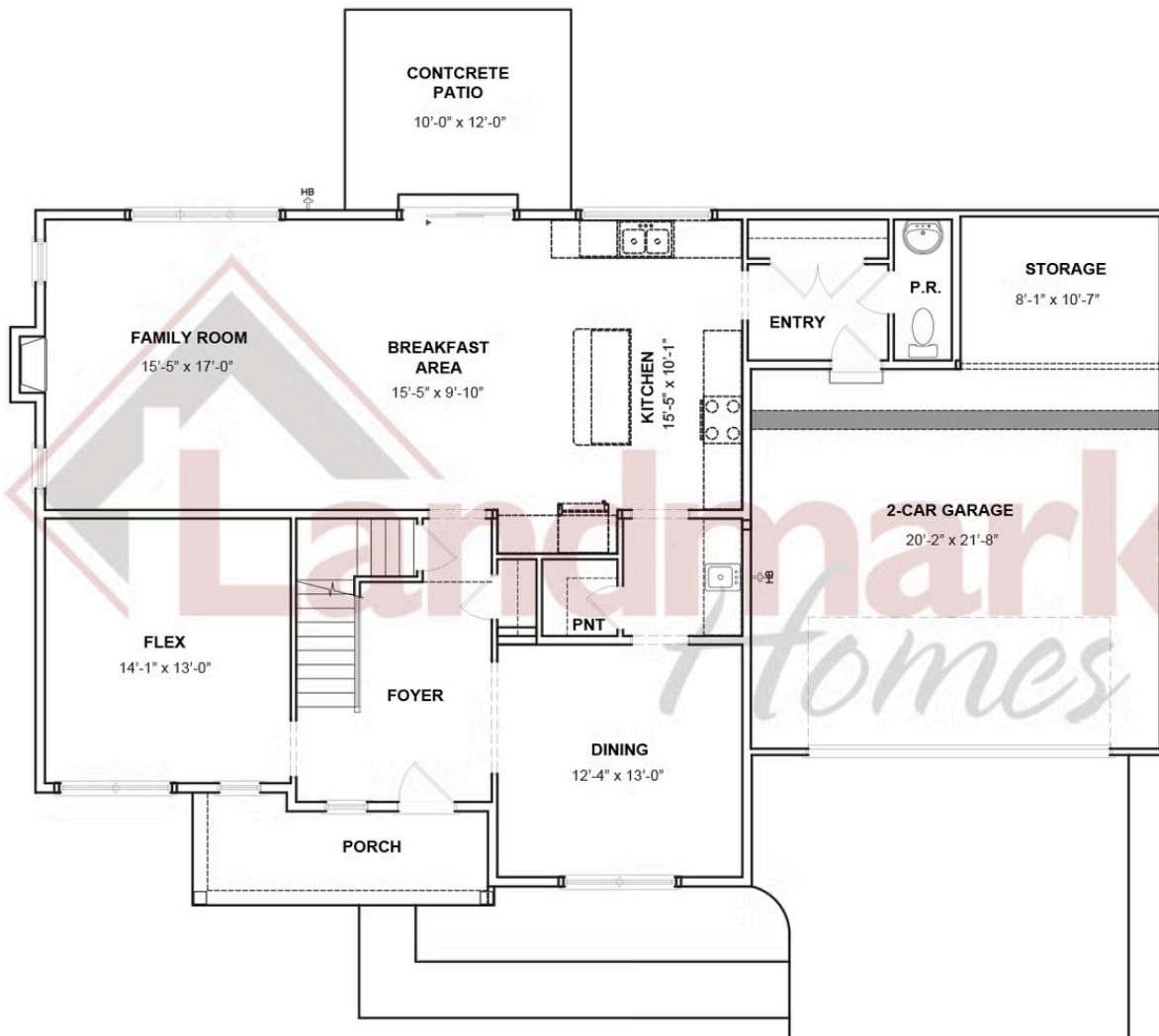


Single Family  
**124 Forge Drive**  
Lebanon, PA 17042

**COMMUNITY SALES MANAGER**

Jilian Treadway  
Call/Text 717-799-6695

## FIRST FLOOR



© 2025 Landmark Builders, Inc. We enforce our intellectual property rights to the fullest extent permitted by applicable law. Elevations and landscaping are artists' conceptions only. Floor plans may vary depending on elevation selected. Actual construction documents take precedence over artwork.



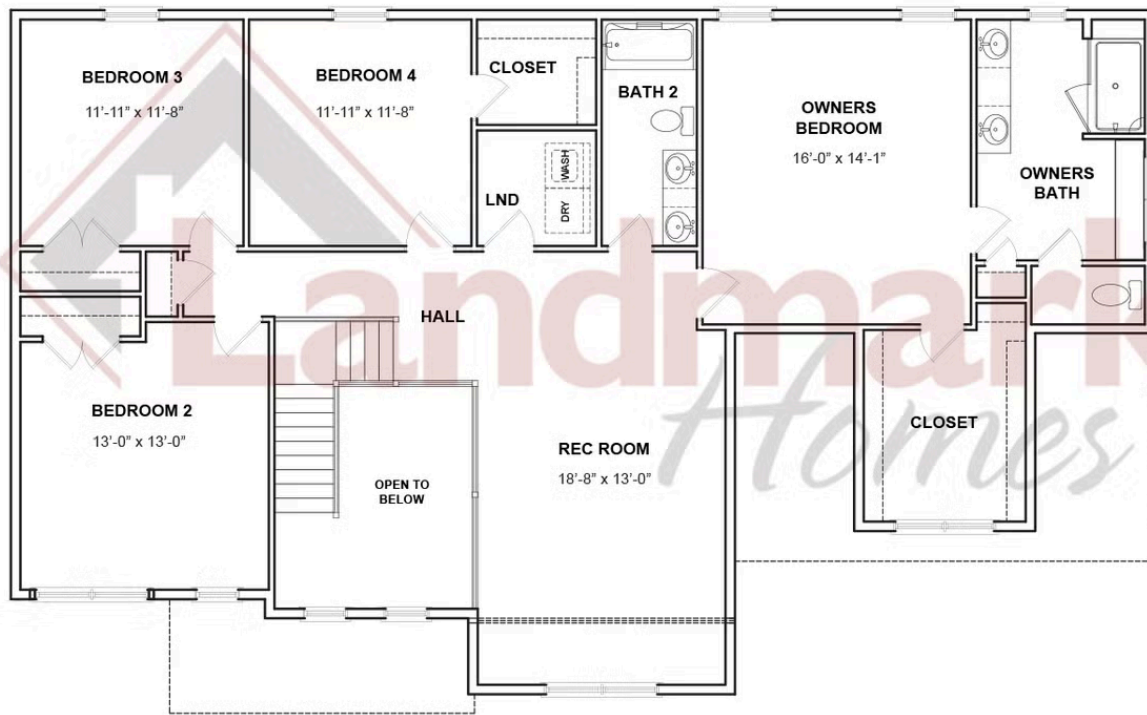


Single Family  
**124 Forge Drive**  
Lebanon, PA 17042

**COMMUNITY SALES MANAGER**

Jilian Treadway  
Call/Text 717-799-6695

## SECOND FLOOR



© 2025 Landmark Builders, Inc. We enforce our intellectual property rights to the fullest extent permitted by applicable law. Elevations and landscaping are artists' conceptions only. Floor plans may vary depending on elevation selected. Actual construction documents take precedence over artwork.

